

Product datasheet for **TA800556S**

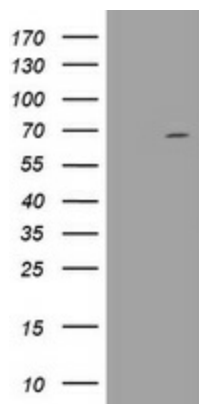
DDX59 Mouse Monoclonal Antibody [Clone ID: OTI2G1]

Product data:

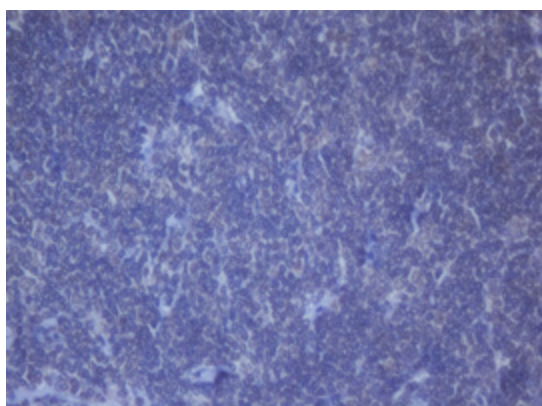
Product Type:	Primary Antibodies
Clone Name:	OTI2G1
Applications:	IHC, WB
Recommended Dilution:	IHC 1:500
Reactivity:	Human
Host:	Mouse
Isotype:	IgG1
Clonality:	Monoclonal
Immunogen:	Human recombinant protein fragment corresponding to amino acids 1-303 of human DDX59 (NP_001026895) produced in E.coli.
Formulation:	PBS (pH 7.3) containing 1% BSA, 50% glycerol and 0.02% sodium azide.
Concentration:	1 mg/ml
Purification:	Purified from mouse ascites fluids or tissue culture supernatant by affinity chromatography (protein A/G)
Conjugation:	Unconjugated
Storage:	Store at -20°C as received.
Stability:	Stable for 12 months from date of receipt.
Predicted Protein Size:	68.6 kDa
Gene Name:	DEAD-box helicase 59
Database Link:	NP_001026895 Entrez Gene 83479 Human Q5T1V6
Synonyms:	OFD5; ZNHIT5



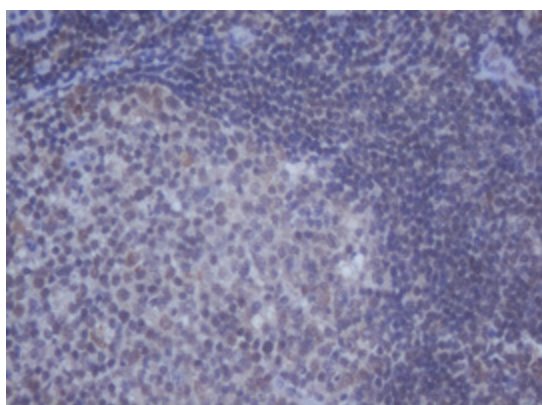
[View online »](#)

Product images:


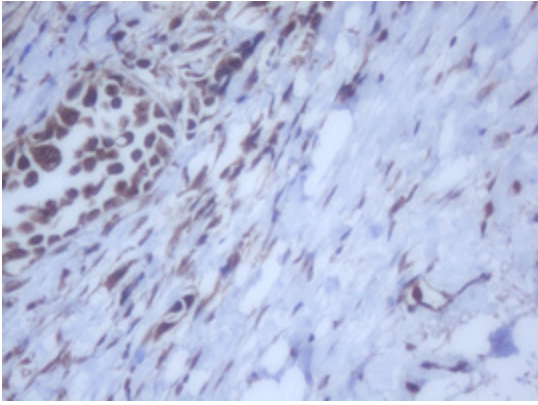
HEK293T cells were transfected with the pCMV6-ENTRY control (Cat# [PS100001], Left lane) or pCMV6-ENTRY DDX59 (Cat# [RC207173], Right lane) cDNA for 48 hrs and lysed. Equivalent amounts of cell lysates (5 ug per lane) were separated by SDS-PAGE and immunoblotted with anti-DDX59(Cat# [TA800556]). Positive lysates [LY422174] (100ug) and [LC422174] (20ug) can be purchased separately from OriGene.



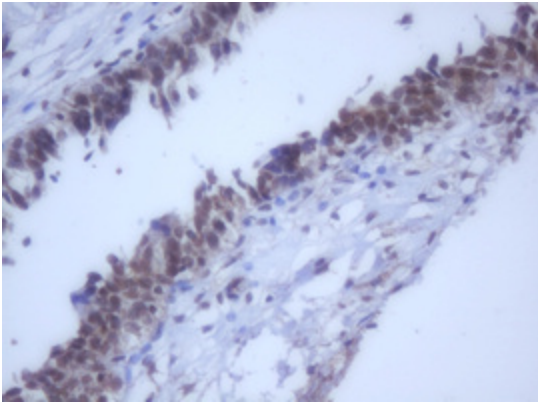
Immunohistochemical staining of paraffin-embedded Human lymphoma tissue using anti-DDX59 mouse monoclonal antibody. (Heat-induced epitope retrieval by 10mM citric buffer, pH6.0, 120°C for 3min, [TA800556])



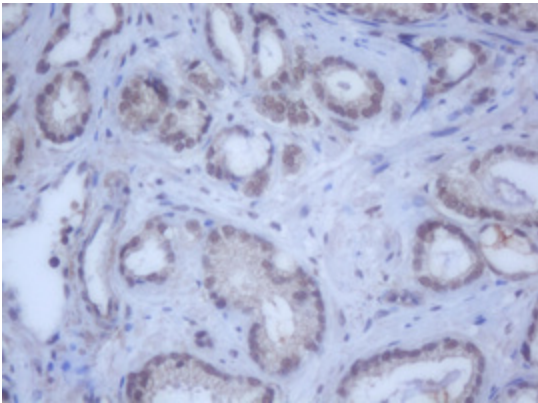
Immunohistochemical staining of paraffin-embedded Human lymph node tissue within the normal limits using anti-DDX59 mouse monoclonal antibody. (Heat-induced epitope retrieval by 10mM citric buffer, pH6.0, 120°C for 3min, [TA800556])



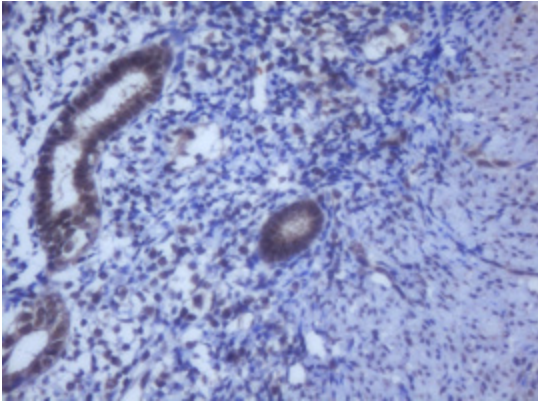
Immunohistochemical staining of paraffin-embedded Carcinoma of Human bladder tissue using anti-DDX59 mouse monoclonal antibody. (Heat-induced epitope retrieval by 10mM citric buffer, pH6.0, 120°C for 3min, [TA800556])



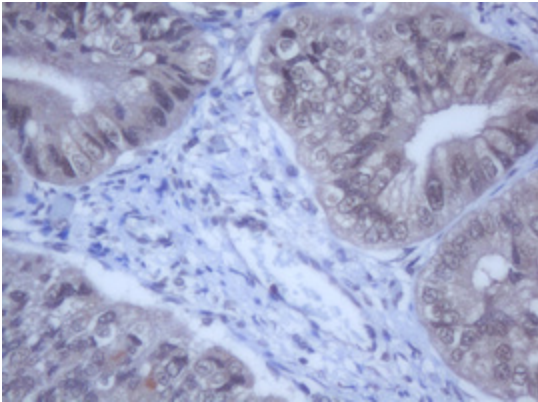
Immunohistochemical staining of paraffin-embedded Human bladder tissue within the normal limits using anti-DDX59 mouse monoclonal antibody. (Heat-induced epitope retrieval by 10mM citric buffer, pH6.0, 120°C for 3min, [TA800556])



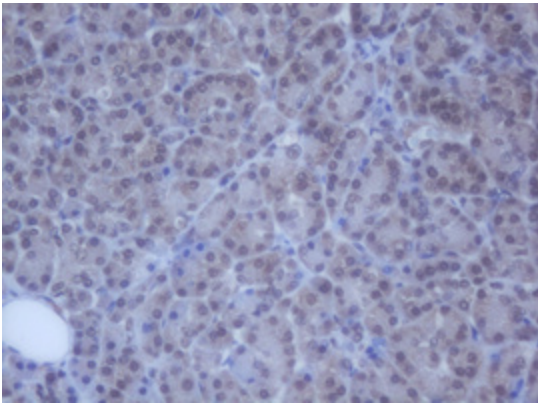
Immunohistochemical staining of paraffin-embedded Carcinoma of Human prostate tissue using anti-DDX59 mouse monoclonal antibody. (Heat-induced epitope retrieval by 10mM citric buffer, pH6.0, 120°C for 3min, [TA800556])



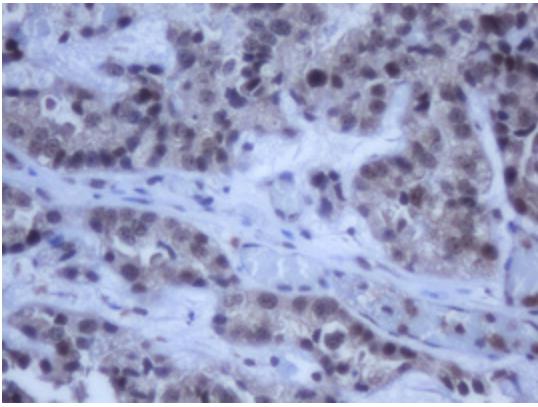
Immunohistochemical staining of paraffin-embedded Human endometrium tissue within the normal limits using anti-DDX59 mouse monoclonal antibody. (Heat-induced epitope retrieval by 10mM citric buffer, pH6.0, 120°C for 3min, [TA800556])



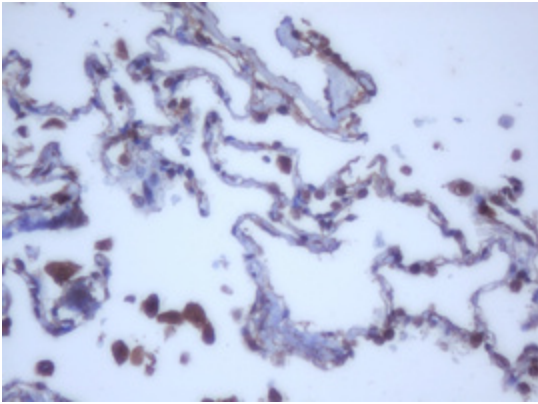
Immunohistochemical staining of paraffin-embedded Adenocarcinoma of Human endometrium tissue using anti-DDX59 mouse monoclonal antibody. (Heat-induced epitope retrieval by 10mM citric buffer, pH6.0, 120°C for 3min, [TA800556])



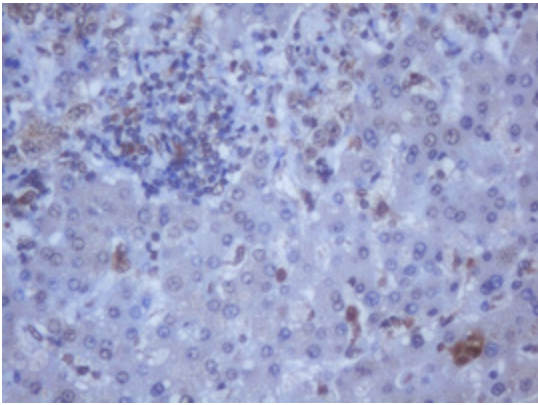
Immunohistochemical staining of paraffin-embedded Human pancreas tissue within the normal limits using anti-DDX59 mouse monoclonal antibody. (Heat-induced epitope retrieval by 10mM citric buffer, pH6.0, 120°C for 3min, [TA800556])



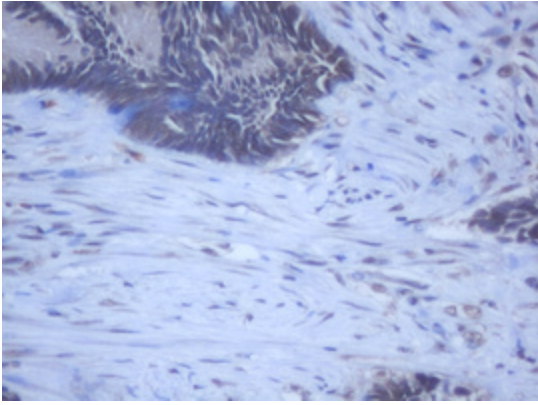
Immunohistochemical staining of paraffin-embedded Adenocarcinoma of Human ovary tissue using anti-DDX59 mouse monoclonal antibody. (Heat-induced epitope retrieval by 10mM citric buffer, pH6.0, 120°C for 3min, [TA800556])



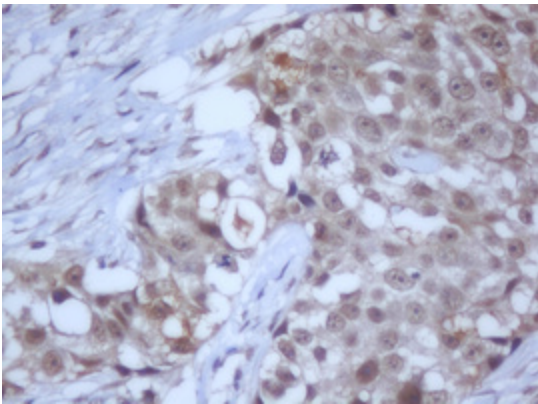
Immunohistochemical staining of paraffin-embedded Human lung tissue within the normal limits using anti-DDX59 mouse monoclonal antibody. (Heat-induced epitope retrieval by 10mM citric buffer, pH6.0, 120°C for 3min, [TA800556])



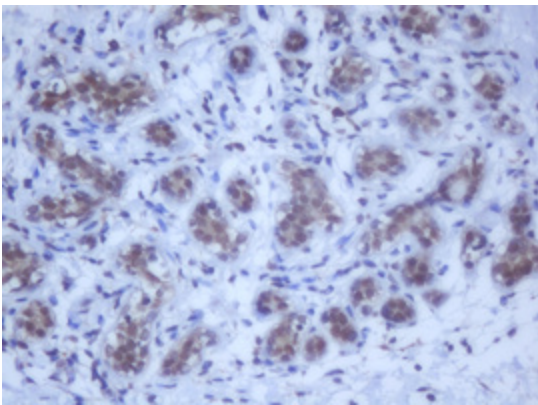
Immunohistochemical staining of paraffin-embedded Carcinoma of Human liver tissue using anti-DDX59 mouse monoclonal antibody. (Heat-induced epitope retrieval by 10mM citric buffer, pH6.0, 120°C for 3min, [TA800556])



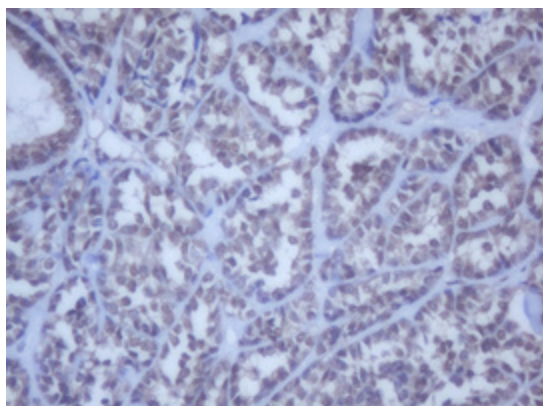
Immunohistochemical staining of paraffin-embedded Adenocarcinoma of Human colon tissue using anti-DDX59 mouse monoclonal antibody. (Heat-induced epitope retrieval by 10mM citric buffer, pH6.0, 120°C for 3min, [TA800556])



Immunohistochemical staining of paraffin-embedded Adenocarcinoma of Human breast tissue using anti-DDX59 mouse monoclonal antibody. (Heat-induced epitope retrieval by 10mM citric buffer, pH6.0, 120°C for 3min, [TA800556])



Immunohistochemical staining of paraffin-embedded Human breast tissue within the normal limits using anti-DDX59 mouse monoclonal antibody. (Heat-induced epitope retrieval by 10mM citric buffer, pH6.0, 120°C for 3min, [TA800556])



Immunohistochemical staining of paraffin-embedded Carcinoma of Human thyroid tissue using anti-DDX59 mouse monoclonal antibody. (Heat-induced epitope retrieval by 10mM citric buffer, pH6.0, 120°C for 3min, [TA800556])