

## Product datasheet for **TA800495BM**

### **S100 beta (S100B) Mouse Monoclonal Antibody (HRP conjugated) [Clone ID: OTI6C5]**

#### **Product data:**

Product Type:	Primary Antibodies
Clone Name:	OTI6C5
Applications:	WB
Recommended Dilution:	WB 1:2000
Reactivity:	Human, Mouse, Rat
Host:	Mouse
Isotype:	IgG1
Clonality:	Monoclonal
Immunogen:	Full length human recombinant protein of human S100B (NP_006263) produced in HEK293T cell.
Formulation:	PBS (pH 7.3) containing 1% BSA, 50% glycerol.
Concentration:	0.5 mg/ml
Purification:	Purified from mouse ascites fluids or tissue culture supernatant by affinity chromatography (protein A/G)
Conjugation:	HRP
Storage:	Store at -20°C as received.
Stability:	Stable for 12 months from date of receipt.
Predicted Protein Size:	10.5 kDa
Gene Name:	S100 calcium binding protein B
Database Link:	<a href="#">NP_006263</a> <a href="#">Entrez Gene 20203 Mouse</a> <a href="#">Entrez Gene 25742 Rat</a> <a href="#">Entrez Gene 6285 Human</a> <a href="#">P04271</a>



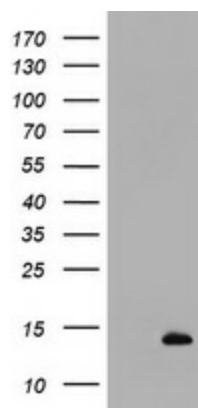
[View online »](#)

**Background:**

The protein encoded by this gene is a member of the S100 family of proteins containing 2 EF-hand calcium-binding motifs. S100 proteins are localized in the cytoplasm and/or nucleus of a wide range of cells, and involved in the regulation of a number of cellular processes such as cell cycle progression and differentiation. S100 genes include at least 13 members which are located as a cluster on chromosome 1q21; however, this gene is located at 21q22.3. This protein may function in Neurite extension, proliferation of melanoma cells, stimulation of Ca<sup>2+</sup> fluxes, inhibition of PKC-mediated phosphorylation, astrocytosis and axonal proliferation, and inhibition of microtubule assembly. Chromosomal rearrangements and altered expression of this gene have been implicated in several neurological, neoplastic, and other types of diseases, including Alzheimer's disease, Down's syndrome, epilepsy, amyotrophic lateral sclerosis, melanoma, and type I diabetes. [provided by RefSeq, Jul 2008]

**Synonyms:**

NEF; S100; S100-B; S100beta

**Product images:**

HEK293T cells were transfected with the pCMV6-ENTRY control (Left lane) or pCMV6-ENTRY S100B ([RC200277], Right lane) cDNA for 48 hrs and lysed. Equivalent amounts of cell lysates (5 ug per lane) were separated by SDS-PAGE and immunoblotted with anti-S100B. Positive lysates [LY416735] (100ug) and [LC416735] (20ug) can be purchased separately from OriGene.