

Product datasheet for **TA800487M**

CD20 (MS4A1) Mouse Monoclonal Antibody [Clone ID: OTI2D3]

Product data:

| | |
|-------------------------|---|
| Product Type: | Primary Antibodies |
| Clone Name: | OTI2D3 |
| Applications: | IHC, WB |
| Recommended Dilution: | WB 1:2000, IHC 1:500 |
| Reactivity: | Human |
| Host: | Mouse |
| Isotype: | IgG1 |
| Clonality: | Monoclonal |
| Immunogen: | Full length human recombinant protein of human MS4A1 (NP_068769) produced in HEK293T cell. |
| Formulation: | PBS (pH 7.3) containing 1% BSA, 50% glycerol and 0.02% sodium azide. |
| Concentration: | 1 mg/ml |
| Purification: | Purified from mouse ascites fluids or tissue culture supernatant by affinity chromatography (protein A/G) |
| Conjugation: | Unconjugated |
| Storage: | Store at -20°C as received. |
| Stability: | Stable for 12 months from date of receipt. |
| Predicted Protein Size: | 32.9 kDa |
| Gene Name: | membrane spanning 4-domains A1 |
| Database Link: | NP_068769 Entrez Gene 931 Human P11836 |



[View online »](#)

Background:

This gene encodes a member of the membrane-spanning 4A gene family. Members of this nascent protein family are characterized by common structural features and similar intron/exon splice boundaries and display unique expression patterns among hematopoietic cells and nonlymphoid tissues. This gene encodes a B-lymphocyte surface molecule which plays a role in the development and differentiation of B-cells into plasma cells. This family member is localized to 11q12, among a cluster of family members. Alternative splicing of this gene results in two transcript variants which encode the same protein. [provided by RefSeq]

Synonyms:

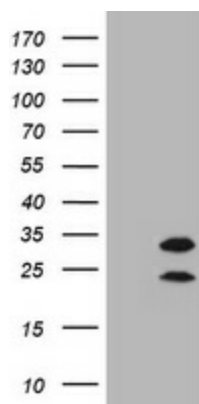
B1; Bp35; CD20; CVID5; FMC7; LEU-16; MS4A2; S7

Protein Families:

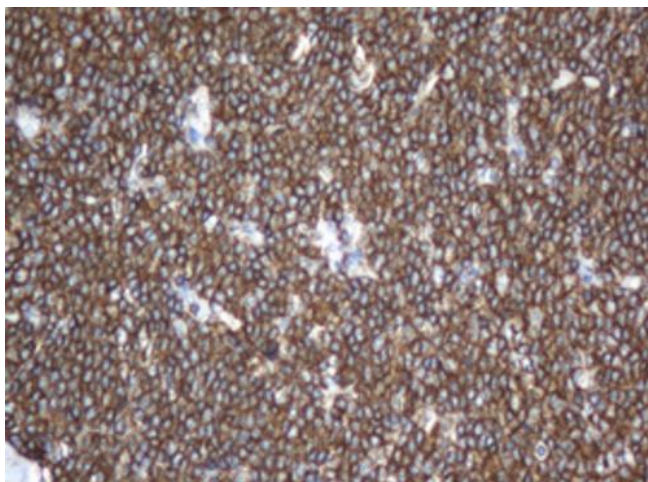
Druggable Genome, Transmembrane

Protein Pathways:

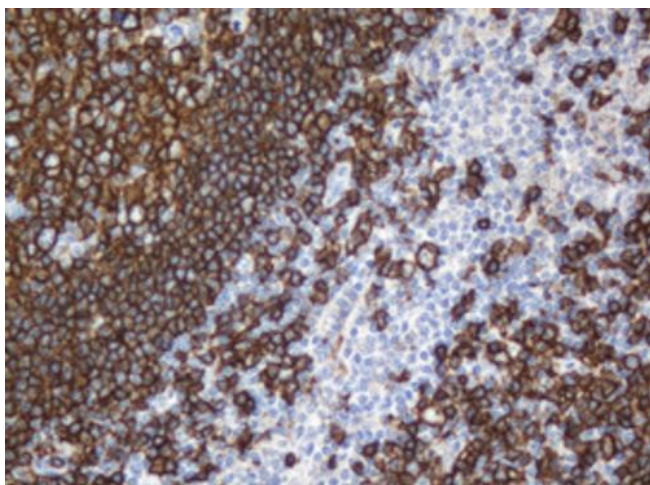
Hematopoietic cell lineage

Product images:


HEK293T cells were transfected with the pCMV6-ENTRY control (Left lane) or pCMV6-ENTRY MS4A1 ([RC201242], Right lane) cDNA for 48 hrs and lysed. Equivalent amounts of cell lysates (5 ug per lane) were separated by SDS-PAGE and immunoblotted with anti-MS4A1. Positive lysates [LY402889] (100ug) and [LC402889] (20ug) can be purchased separately from OriGene.



Immunohistochemical staining of paraffin-embedded Human lymphoma tissue using anti-MS4A1 mouse monoclonal antibody. Heat-induced epitope retrieval by EDTA solution buffer pH 8.0 at 120°C for 3 min.



Immunohistochemical staining of paraffin-embedded Human tonsil within the normal limits using anti-MS4A1 mouse monoclonal antibody. Heat-induced epitope retrieval by EDTA solution buffer pH 8.0 at 120°C for 3 min.