

## Product datasheet for **TA800482M**

### ZFAND5 Mouse Monoclonal Antibody [Clone ID: OTI1D8]

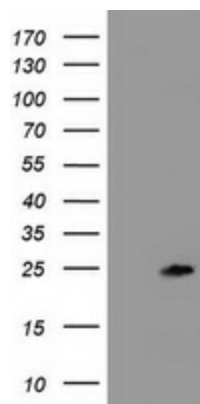
#### Product data:

Product Type:	Primary Antibodies
Clone Name:	OTI1D8
Applications:	IHC, WB
Recommended Dilution:	WB 1:2000, IHC 1:150
Reactivity:	Human, Mouse, Rat
Host:	Mouse
Isotype:	IgG1
Clonality:	Monoclonal
Immunogen:	Full length human recombinant protein of human ZFAND5 (NP_005998) produced in E.coli.
Formulation:	PBS (pH 7.3) containing 1% BSA, 50% glycerol and 0.02% sodium azide.
Concentration:	1 mg/ml
Purification:	Purified from mouse ascites fluids or tissue culture supernatant by affinity chromatography (protein A/G)
Conjugation:	Unconjugated
Storage:	Store at -20°C as received.
Stability:	Stable for 12 months from date of receipt.
Predicted Protein Size:	23 kDa
Gene Name:	zinc finger AN1-type containing 5
Database Link:	<a href="#">NP_005998</a> <a href="#">Entrez Gene 22682 Mouse</a> <a href="#">Entrez Gene 7763 Human</a> <a href="#">O76080</a>
Synonyms:	ZA20D2; ZFAND5A; ZNF216

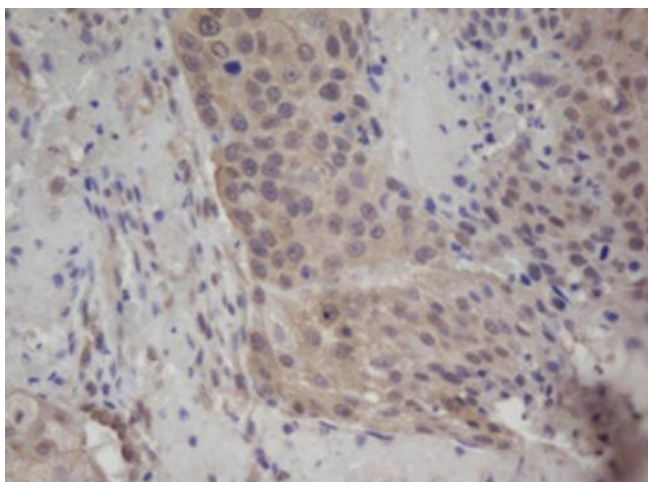


[View online »](#)

## Product images:



HEK293T cells were transfected with the pCMV6-ENTRY control (Left lane) or pCMV6-ENTRY ZFAND5 ([RC209943], Right lane) cDNA for 48 hrs and lysed. Equivalent amounts of cell lysates (5 ug per lane) were separated by SDS-PAGE and immunoblotted with anti-ZFAND5. Positive lysates [LY416931] (100ug) and [LC416931] (20ug) can be purchased separately from OriGene.



Immunohistochemical staining of paraffin-embedded Carcinoma of Human lung tissue using anti-ZFAND5 mouse monoclonal antibody. Heat-induced epitope retrieval by EDTA solution buffer pH 8.0 at 120°C for 3 min.