

## Product datasheet for **TA800467**

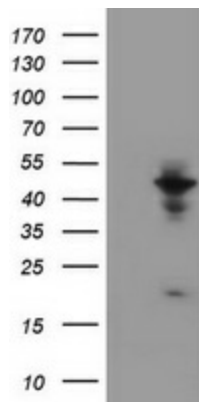
### WDR74 Mouse Monoclonal Antibody [Clone ID: OTI4B2]

#### Product data:

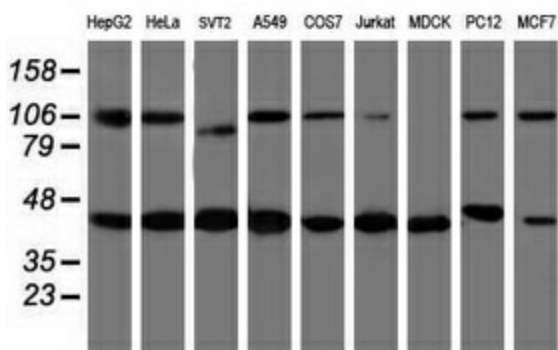
Product Type:	Primary Antibodies
Clone Name:	OTI4B2
Applications:	IHC, WB
Recommended Dilution:	WB 1:2000, IHC 1:150
Reactivity:	Human, Dog, Rat, Monkey, Mouse
Host:	Mouse
Isotype:	IgG1
Clonality:	Monoclonal
Immunogen:	Human recombinant protein fragment corresponding to amino acids 114-385 of human WDR74 (NP_060563) produced in E.coli.
Formulation:	PBS (pH 7.3) containing 1% BSA, 50% glycerol and 0.02% sodium azide.
Concentration:	1 mg/ml
Purification:	Purified from mouse ascites fluids or tissue culture supernatant by affinity chromatography (protein A/G)
Conjugation:	Unconjugated
Storage:	Store at -20°C as received.
Stability:	Stable for 12 months from date of receipt.
Predicted Protein Size:	42.3 kDa
Gene Name:	WD repeat domain 74
Database Link:	<a href="#">NP_060563</a> <a href="#">Entrez Gene 107071</a> <a href="#">MouseEntrez Gene 690229</a> <a href="#">RatEntrez Gene 483778</a> <a href="#">DogEntrez Gene 718460</a> <a href="#">MonkeyEntrez Gene 54663</a> <a href="#">Human Q6RFH5</a>
Synonyms:	FLJ10439; FLJ21730



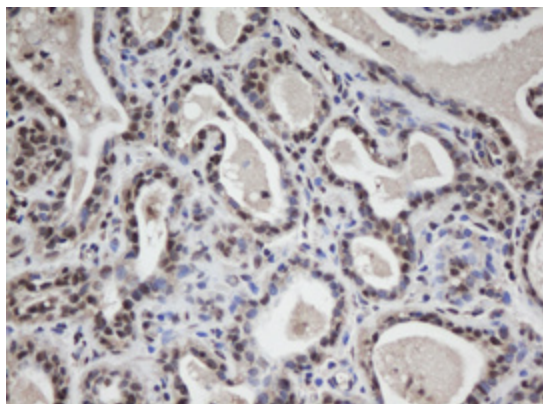
[View online »](#)

**Product images:**


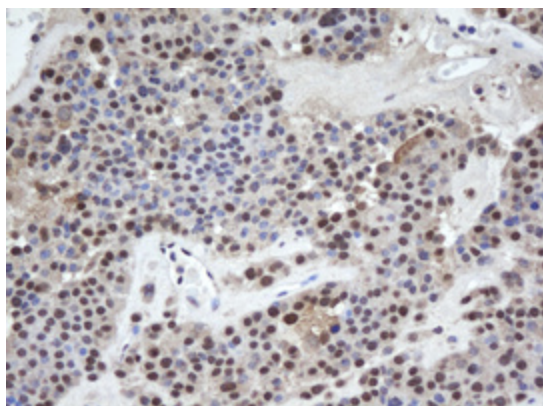
HEK293T cells were transfected with the pCMV6-ENTRY control (Cat# [PS100001], Left lane) or pCMV6-ENTRY WDR74 (Cat# [RC221134], Right lane) cDNA for 48 hrs and lysed. Equivalent amounts of cell lysates (5 ug per lane) were separated by SDS-PAGE and immunoblotted with anti-WDR74 (Cat# TA800467). Positive lysates [LY413318] (100ug) and [LC413318] (20ug) can be purchased separately from OriGene.



Western blot analysis of extracts (35ug) from 9 different cell lines by using anti-WDR74 monoclonal antibody (HepG2: human; HeLa: human; SVT2: mouse; A549: human; COS7: monkey; Jurkat: human; MDCK: canine; PC12: rat; MCF7: human).



Immunohistochemical staining of paraffin-embedded Human breast tissue within the normal limits using anti-WDR74 mouse monoclonal antibody. (Heat-induced epitope retrieval by 10mM citric buffer, pH6.0, 100°C for 10min, TA800467)



Immunohistochemical staining of paraffin-embedded Carcinoma of Human pancreas tissue using anti-WDR74 mouse monoclonal antibody. (Heat-induced epitope retrieval by 10mM citric buffer, pH6.0, 100°C for 10min, TA800467)