

Product datasheet for **TA800464M**

CD20 (MS4A1) Mouse Monoclonal Antibody [Clone ID: OTI1C12]

Product data:

Product Type:	Primary Antibodies
Clone Name:	OTI1C12
Applications:	WB
Recommended Dilution:	WB 1:2000
Reactivity:	Human
Host:	Mouse
Isotype:	IgG1
Clonality:	Monoclonal
Immunogen:	Full length human recombinant protein of human MS4A1 (NP_068769) produced in HEK293T cell.
Formulation:	PBS (pH 7.3) containing 1% BSA, 50% glycerol and 0.02% sodium azide.
Concentration:	1 mg/ml
Purification:	Purified from mouse ascites fluids or tissue culture supernatant by affinity chromatography (protein A/G)
Conjugation:	Unconjugated
Storage:	Store at -20°C as received.
Stability:	Stable for 12 months from date of receipt.
Predicted Protein Size:	32.9 kDa
Gene Name:	membrane spanning 4-domains A1
Database Link:	NP_068769 Entrez Gene 931 Human P11836

[View online »](#)

Background:

This gene encodes a member of the membrane-spanning 4A gene family. Members of this nascent protein family are characterized by common structural features and similar intron/exon splice boundaries and display unique expression patterns among hematopoietic cells and nonlymphoid tissues. This gene encodes a B-lymphocyte surface molecule which plays a role in the development and differentiation of B-cells into plasma cells. This family member is localized to 11q12, among a cluster of family members. Alternative splicing of this gene results in two transcript variants which encode the same protein. [provided by RefSeq]

Synonyms:

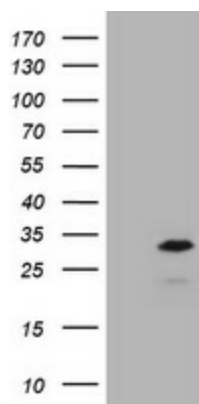
B1; Bp35; CD20; CVID5; FMC7; LEU-16; MS4A2; S7

Protein Families:

Druggable Genome, Transmembrane

Protein Pathways:

Hematopoietic cell lineage

Product images:


HEK293T cells were transfected with the pCMV6-ENTRY control (Left lane) or pCMV6-ENTRY MS4A1 ([RC201242], Right lane) cDNA for 48 hrs and lysed. Equivalent amounts of cell lysates (5 ug per lane) were separated by SDS-PAGE and immunoblotted with anti-MS4A1. Positive lysates [LY402889] (100ug) and [LC402889] (20ug) can be purchased separately from OriGene.