

Product datasheet for **TA800455M**

BCL10 Mouse Monoclonal Antibody [Clone ID: OTI2G9]

Product data:

Product Type:	Primary Antibodies
Clone Name:	OTI2G9
Applications:	WB
Recommended Dilution:	WB 1:2000
Reactivity:	Human, Mouse, Rat
Host:	Mouse
Isotype:	IgG1
Clonality:	Monoclonal
Immunogen:	Full length human recombinant protein of human BCL10 (NP_003912) produced in HEK293T cell.
Formulation:	PBS (pH 7.3) containing 1% BSA, 50% glycerol and 0.02% sodium azide.
Concentration:	1 mg/ml
Purification:	Purified from mouse ascites fluids or tissue culture supernatant by affinity chromatography (protein A/G)
Conjugation:	Unconjugated
Storage:	Store at -20°C as received.
Stability:	Stable for 12 months from date of receipt.
Predicted Protein Size:	26.1 kDa
Gene Name:	B-cell CLL/lymphoma 10
Database Link:	NP_003912 Entrez Gene 12042 Mouse Entrez Gene 83477 Rat Entrez Gene 8915 Human O95999



[View online »](#)

Background:

This gene was identified by its translocation in a case of mucosa-associated lymphoid tissue (MALT) lymphoma. The protein encoded by this gene contains a caspase recruitment domain (CARD), and has been shown to induce apoptosis and to activate NF-kappaB. This protein is reported to interact with other CARD domain containing proteins including CARD9, 10, 11 and 14, which are thought to function as upstream regulators in NF-kappaB signaling. This protein is found to form a complex with MALT1, a protein encoded by another gene known to be translocated in MALT lymphoma. MALT1 and this protein are thought to synergize in the activation of NF-kappaB, and the deregulation of either of them may contribute to the same pathogenetic process that leads to the malignancy. [provided by RefSeq]

Synonyms:

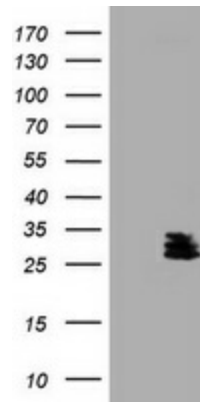
c-E10; CARMEN; CIPER; CLAP; IMD37; mE10

Protein Families:

Druggable Genome

Protein Pathways:

B cell receptor signaling pathway, T cell receptor signaling pathway

Product images:


HEK293T cells were transfected with the pCMV6-ENTRY control (Left lane) or pCMV6-ENTRY BCL10 ([RC208752], Right lane) cDNA for 48 hrs and lysed. Equivalent amounts of cell lysates (5 ug per lane) were separated by SDS-PAGE and immunoblotted with anti-BCL10. Positive lysates [LY418351] (100ug) and [LC418351] (20ug) can be purchased separately from OriGene.