

Product datasheet for **TA800452BM**

Mitochondrial Translational Initiation Factor 3 (MTIF3) Mouse Monoclonal Antibody (HRP conjugated) [Clone ID: OTI3C10]

Product data:

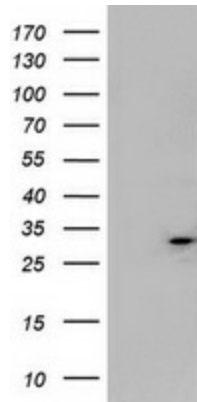
Product Type:	Primary Antibodies
Clone Name:	OTI3C10
Applications:	WB
Recommended Dilution:	WB 1:2000
Reactivity:	Human, Dog
Host:	Mouse
Isotype:	IgG2b
Clonality:	Monoclonal
Immunogen:	Human recombinant protein fragment corresponding to amino acids 56-278 of human MTIF3 (NP_690876) produced in E.coli.
Formulation:	PBS (pH 7.3) containing 1% BSA, 50% glycerol.
Concentration:	0.5 mg/ml
Purification:	Purified from mouse ascites fluids or tissue culture supernatant by affinity chromatography (protein A/G)
Conjugation:	HRP
Storage:	Store at -20°C as received.
Stability:	Stable for 12 months from date of receipt.
Predicted Protein Size:	31.5 kDa
Gene Name:	mitochondrial translational initiation factor 3
Database Link:	NP_690876 Entrez Gene 477328 Dog Entrez Gene 219402 Human Q9H2K0
Background:	This gene encodes a translation initiation factor that is involved in mitochondrial protein synthesis. Polymorphism in this gene is associated with the onset of Parkinson's disease. Alternate splicing results in multiple transcript variants. A pseudogene of this gene is found on chromosome 5. [provided by RefSeq, Oct 2009]



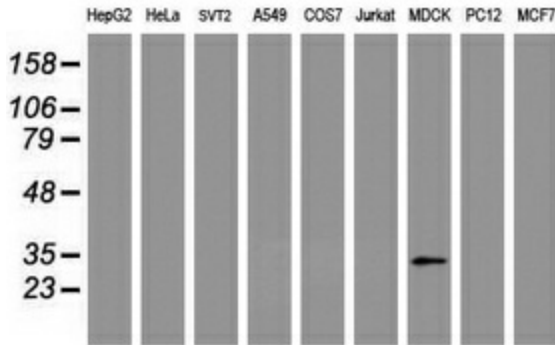
[View online »](#)

Synonyms: IF3mt

Product images:



HEK293T cells were transfected with the pCMV6-ENTRY control (Left lane) or pCMV6-ENTRY MTIF3 ([RC208533], Right lane) cDNA for 48 hrs and lysed. Equivalent amounts of cell lysates (5 ug per lane) were separated by SDS-PAGE and immunoblotted with anti-MTIF3. Positive lysates [LY407210] (100ug) and [LC407210] (20ug) can be purchased separately from OriGene.



Western blot analysis of extracts (35ug) from 9 different cell lines by using anti-MTIF3 monoclonal antibody (HepG2: human; HeLa: human; SVT2: mouse; A549: human; COS7: monkey; Jurkat: human; MDCK: canine; PC12: rat; MCF7: human).