

## Product datasheet for **TA800450S**

### **BCL10 Mouse Monoclonal Antibody [Clone ID: OTI3C2]**

#### **Product data:**

<b>Product Type:</b>	Primary Antibodies
<b>Clone Name:</b>	OTI3C2
<b>Applications:</b>	IHC, WB
<b>Recommended Dilution:</b>	WB: 1:2000, IHC: 1:150
<b>Reactivity:</b>	Human, Mouse, Rat
<b>Host:</b>	Mouse
<b>Isotype:</b>	IgG1
<b>Clonality:</b>	Monoclonal
<b>Immunogen:</b>	Full length human recombinant protein of human BCL10 (NP_003912) produced in HEK293T cell.
<b>Formulation:</b>	PBS (pH 7.3) containing 1% BSA, 50% glycerol and 0.02% sodium azide.
<b>Concentration:</b>	1 mg/ml
<b>Purification:</b>	Purified from mouse ascites fluids or tissue culture supernatant by affinity chromatography (protein A/G)
<b>Conjugation:</b>	Unconjugated
<b>Storage:</b>	Store at -20°C as received.
<b>Stability:</b>	Stable for 12 months from date of receipt.
<b>Predicted Protein Size:</b>	26.1 kDa
<b>Gene Name:</b>	B-cell CLL/lymphoma 10
<b>Database Link:</b>	<a href="#">NP_003912</a> <a href="#">Entrez Gene 12042 Mouse</a> <a href="#">Entrez Gene 83477 Rat</a> <a href="#">Entrez Gene 8915 Human</a> <a href="#">O95999</a>



[View online »](#)

**Background:**

This gene was identified by its translocation in a case of mucosa-associated lymphoid tissue (MALT) lymphoma. The protein encoded by this gene contains a caspase recruitment domain (CARD), and has been shown to induce apoptosis and to activate NF-kappaB. This protein is reported to interact with other CARD domain containing proteins including CARD9, 10, 11 and 14, which are thought to function as upstream regulators in NF-kappaB signaling. This protein is found to form a complex with MALT1, a protein encoded by another gene known to be translocated in MALT lymphoma. MALT1 and this protein are thought to synergize in the activation of NF-kappaB, and the deregulation of either of them may contribute to the same pathogenetic process that leads to the malignancy. [provided by RefSeq]

**Synonyms:**

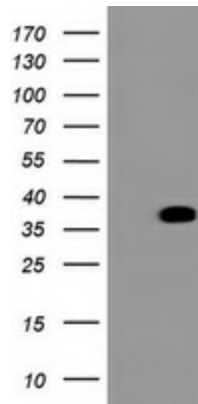
c-E10; CARMEN; CIPER; CLAP; IMD37; mE10

**Protein Families:**

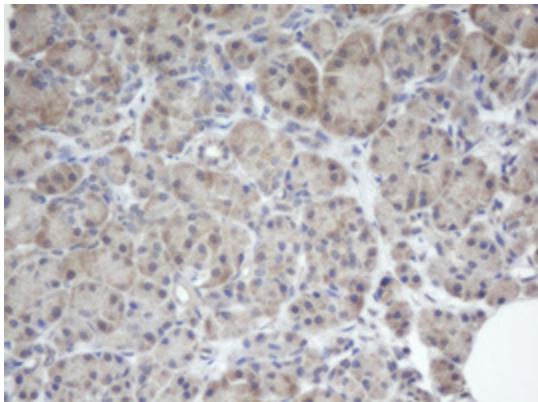
Druggable Genome

**Protein Pathways:**

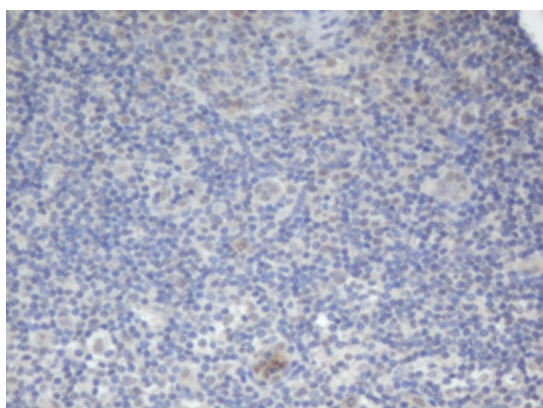
B cell receptor signaling pathway, T cell receptor signaling pathway

**Product images:**

HEK293T cells were transfected with the pCMV6-ENTRY control (Left lane) or pCMV6-ENTRY BCL10 ([RC208752], Right lane) cDNA for 48 hrs and lysed. Equivalent amounts of cell lysates (5 ug per lane) were separated by SDS-PAGE and immunoblotted with anti-BCL10. Positive lysates [LY418351] (100ug) and [LC418351] (20ug) can be purchased separately from OriGene.



Immunohistochemical staining of paraffin-embedded Human pancreas tissue within the normal limits using anti-BCL10 mouse monoclonal antibody. ([TA800450]) Dilution: 1:150



Immunohistochemical staining of paraffin-embedded Human lymph node tissue within the normal limits using anti-BCL10 mouse monoclonal antibody. (TA800450) Dilution: 1:150