

## Product datasheet for **TA800439BM**

### Epoxide hydrolase (EPHX1) Mouse Monoclonal Antibody (HRP conjugated) [Clone ID: OTI2D8]

#### Product data:

Product Type:	Primary Antibodies
Clone Name:	OTI2D8
Applications:	IHC, WB
Recommended Dilution:	WB 1:2000, IHC 1:100
Reactivity:	Human, Dog, Monkey
Host:	Mouse
Isotype:	IgG2b
Clonality:	Monoclonal
Immunogen:	Human recombinant protein fragment corresponding to amino acids 21-230 of human EPHX1 (NP_000111) produced in E.coli.
Formulation:	PBS (pH 7.3) containing 1% BSA, 50% glycerol.
Concentration:	0.5 mg/ml
Purification:	Purified from mouse ascites fluids or tissue culture supernatant by affinity chromatography (protein A/G)
Conjugation:	HRP
Storage:	Store at -20°C as received.
Stability:	Stable for 12 months from date of receipt.
Predicted Protein Size:	52.8 kDa
Gene Name:	epoxide hydrolase 1
Database Link:	<a href="#">NP_000111</a> <a href="#">Entrez Gene 480113 Dog</a> <a href="#">Entrez Gene 700180 Monkey</a> <a href="#">Entrez Gene 2052 Human</a> <a href="#">P07099</a>
Background:	Epoxide hydrolase is a critical biotransformation enzyme that converts epoxides from the degradation of aromatic compounds to trans-dihydrodiols which can be conjugated and excreted from the body. Epoxide hydrolase functions in both the activation and detoxification of epoxides. Mutations in this gene cause preeclampsia, epoxide hydrolase deficiency or increased epoxide hydrolase activity. Alternatively spliced transcript variants encoding the same protein have been found for this gene. [provided by RefSeq, Dec 2008]



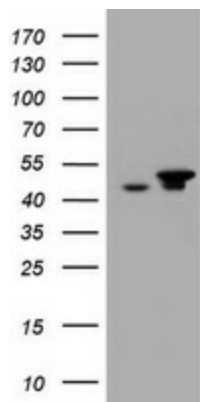
[View online »](#)

**Synonyms:** EPHX; EPOX; HYL1; MEH

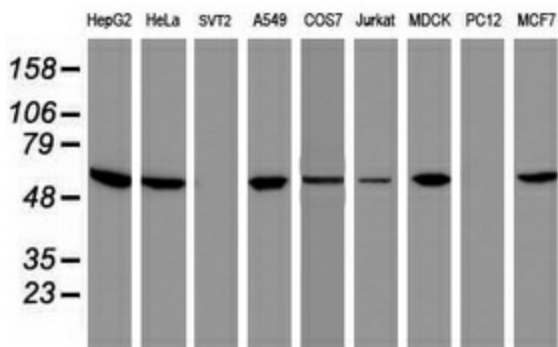
**Protein Families:** Druggable Genome, Protease

**Protein Pathways:** Metabolism of xenobiotics by cytochrome P450

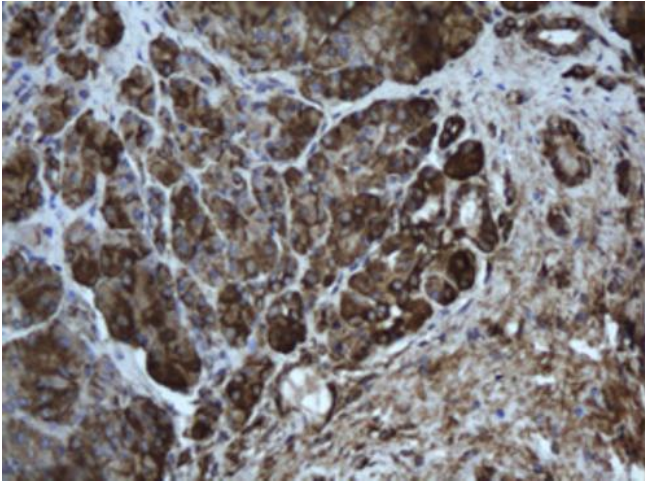
**Product images:**



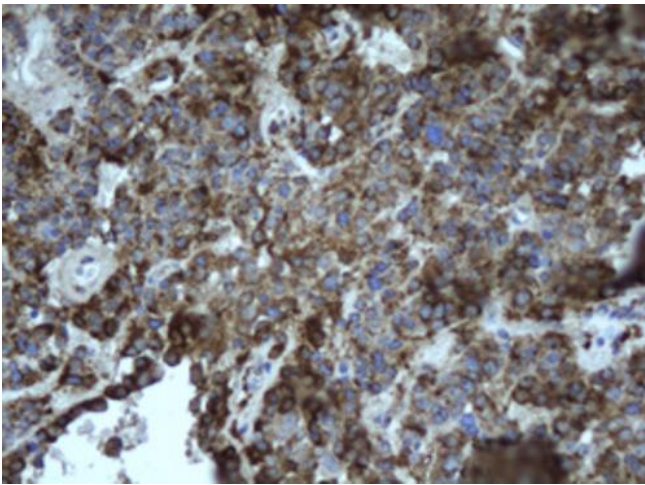
HEK293T cells were transfected with the pCMV6-ENTRY control (Left lane) or pCMV6-ENTRY EPHX1 ([RC200621], Right lane) cDNA for 48 hrs and lysed. Equivalent amounts of cell lysates (5 ug per lane) were separated by SDS-PAGE and immunoblotted with anti-EPHX1. Positive lysates [LY400042] (100ug) and [LC400042] (20ug) can be purchased separately from OriGene.



Western blot analysis of extracts (35ug) from 9 different cell lines by using anti-EPHX1 monoclonal antibody (HepG2: human; HeLa: human; SVT2: mouse; A549: human; COS7: monkey; Jurkat: human; MDCK: canine; PC12: rat; MCF7: human).



Immunohistochemical staining of paraffin-embedded Human pancreas tissue within the normal limits using anti-EPHX1 mouse monoclonal antibody. (Heat-induced epitope retrieval by 10mM citric buffer, pH6.0, 100°C for 10min, [TA800439])



Immunohistochemical staining of paraffin-embedded Carcinoma of Human pancreas tissue using anti-EPHX1 mouse monoclonal antibody. (Heat-induced epitope retrieval by 10mM citric buffer, pH6.0, 100°C for 10min, [TA800439])