

## Product datasheet for **TA800411AM**

### Cullin 4B (CUL4B) Mouse Monoclonal Antibody (Biotin conjugated) [Clone ID: OTI7F8]

#### Product data:

Product Type:	Primary Antibodies
Clone Name:	OTI7F8
Applications:	WB
Recommended Dilution:	WB 1:2000
Reactivity:	Human, Dog, Rat, Monkey, Mouse
Host:	Mouse
Isotype:	IgG1
Clonality:	Monoclonal
Immunogen:	Human recombinant protein fragment corresponding to amino acids 1-300 of human CUL4B (NP_003579) produced in E.coli.
Formulation:	PBS (pH 7.3) containing 1% BSA, 50% glycerol and 0.02% sodium azide.
Concentration:	0.5 mg/ml
Purification:	Purified from mouse ascites fluids or tissue culture supernatant by affinity chromatography (protein A/G)
Conjugation:	Biotin
Storage:	Store at -20°C as received.
Stability:	Stable for 12 months from date of receipt.
Predicted Protein Size:	103.8 kDa
Gene Name:	cullin 4B
Database Link:	<a href="#">NP_003579</a> <a href="#">Entrez Gene 72584 Mouse</a> <a href="#">Entrez Gene 302502 Rat</a> <a href="#">Entrez Gene 492102 Dog</a> <a href="#">Entrez Gene 696410 Monkey</a> <a href="#">Entrez Gene 8450 Human</a> <a href="#">Q13620</a>



[View online »](#)

**Background:**

This gene is a member of the cullin family. The encoded protein forms a complex that functions as an E3 ubiquitin ligase and catalyzes the polyubiquitination of specific protein substrates in the cell. The protein interacts with a ring finger protein, and is required for the proteolysis of several regulators of DNA replication including chromatin licensing and DNA replication factor 1 and cyclin E. Multiple transcript variants encoding different isoforms have been found for this gene. [provided by RefSeq, Jul 2008]

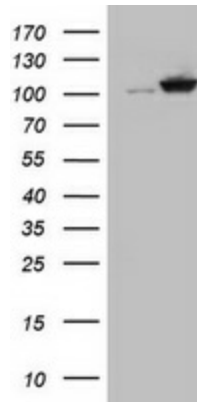
**Synonyms:**

CUL-4B; MRXHF2; MRXS15; MRXSC; SFM2

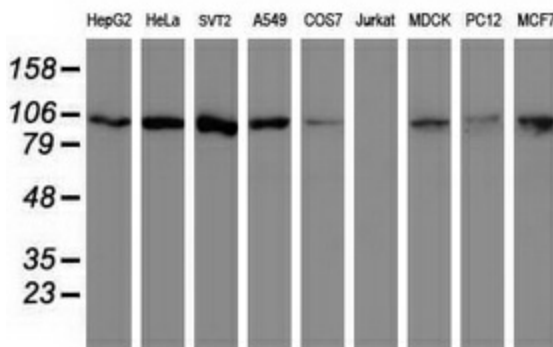
**Protein Pathways:**

Nucleotide excision repair, Ubiquitin mediated proteolysis

**Product images:**



HEK293T cells were transfected with the pCMV6-ENTRY control (Left lane) or pCMV6-ENTRY CUL4B ([RC206935], Right lane) cDNA for 48 hrs and lysed. Equivalent amounts of cell lysates (5 ug per lane) were separated by SDS-PAGE and immunoblotted with anti-CUL4B. Positive lysates [LY418558] (100ug) and [LC418558] (20ug) can be purchased separately from OriGene.



Western blot analysis of extracts (35ug) from 9 different cell lines by using anti-CUL4B monoclonal antibody (HepG2: human; HeLa: human; SVT2: mouse; A549: human; COS7: monkey; Jurkat: human; MDCK: canine; PC12: rat; MCF7: human).