

## Product datasheet for **TA800408M**

### Epoxide hydrolase (EPHX1) Mouse Monoclonal Antibody [Clone ID: OTI2C1]

#### Product data:

Product Type:	Primary Antibodies
Clone Name:	OTI2C1
Applications:	FC, WB
Recommended Dilution:	WB 1:2000, FLOW 1:100
Reactivity:	Human
Host:	Mouse
Isotype:	IgG2b
Clonality:	Monoclonal
Immunogen:	Human recombinant protein fragment corresponding to amino acids 21-230 of human EPHX1 (NP_000111) produced in E.coli.
Formulation:	PBS (pH 7.3) containing 1% BSA, 50% glycerol and 0.02% sodium azide.
Concentration:	1 mg/ml
Purification:	Purified from mouse ascites fluids or tissue culture supernatant by affinity chromatography (protein A/G)
Conjugation:	Unconjugated
Storage:	Store at -20°C as received.
Stability:	Stable for 12 months from date of receipt.
Predicted Protein Size:	52.8 kDa
Gene Name:	epoxide hydrolase 1
Database Link:	<a href="#">NP_000111</a> <a href="#">Entrez Gene 2052 Human</a> <a href="#">P07099</a>
Background:	Epoxide hydrolase is a critical biotransformation enzyme that converts epoxides from the degradation of aromatic compounds to trans-dihydrodiols which can be conjugated and excreted from the body. Epoxide hydrolase functions in both the activation and detoxification of epoxides. Mutations in this gene cause preeclampsia, epoxide hydrolase deficiency or increased epoxide hydrolase activity. Alternatively spliced transcript variants encoding the same protein have been found for this gene.



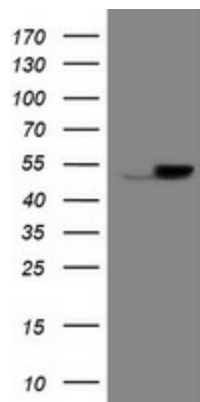
[View online »](#)

**Synonyms:** EPHX; EPOX; HYL1; MEH

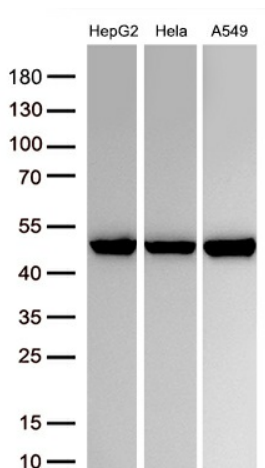
**Protein Families:** Druggable Genome, Protease

**Protein Pathways:** Metabolism of xenobiotics by cytochrome P450

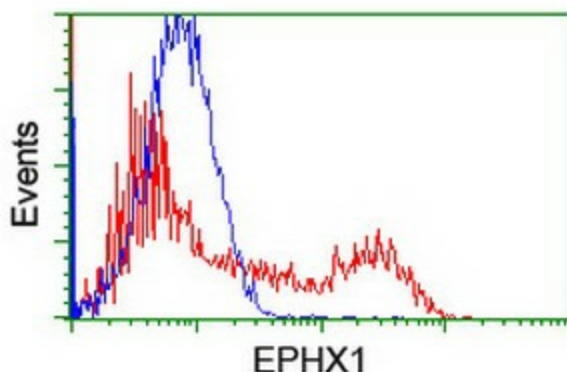
### Product images:



HEK293T cells were transfected with the pCMV6-ENTRY control (Left lane) or pCMV6-ENTRY EPHX1 ([RC200621], Right lane) cDNA for 48 hrs and lysed. Equivalent amounts of cell lysates (5 ug per lane) were separated by SDS-PAGE and immunoblotted with anti-EPHX1. Positive lysates [LY400042] (100ug) and [LC400042] (20ug) can be purchased separately from OriGene.



Western blot analysis of extracts (30ug per lane) from 3 cell lines lysates by using anti-EPHX1 monoclonal antibody([TA800408], 1:2000).



HEK293T cells transfected with either [RC200621] overexpress plasmid (Red) or empty vector control plasmid (Blue) were immunostained by anti-EPHX1 antibody ([TA800408]), and then analyzed by flow cytometry.

