

## Product datasheet for **TA800400M**

### A4GNT Mouse Monoclonal Antibody [Clone ID: OTI5B5]

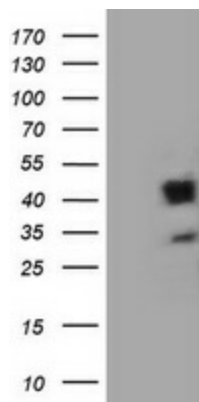
#### Product data:

Product Type:	Primary Antibodies
Clone Name:	OTI5B5
Applications:	IHC, WB
Recommended Dilution:	IHC 1:150
Reactivity:	Human
Host:	Mouse
Isotype:	IgG1
Clonality:	Monoclonal
Immunogen:	Human recombinant protein fragment corresponding to amino acids 121-340 of human A4GNT (NP_057245) produced in E.coli.
Formulation:	PBS (pH 7.3) containing 1% BSA, 50% glycerol and 0.02% sodium azide.
Concentration:	1 mg/ml
Purification:	Purified from mouse ascites fluids or tissue culture supernatant by affinity chromatography (protein A/G)
Conjugation:	Unconjugated
Storage:	Store at -20°C as received.
Stability:	Stable for 12 months from date of receipt.
Predicted Protein Size:	39.3 kDa
Gene Name:	alpha-1,4-N-acetylglucosaminyltransferase
Database Link:	<a href="#">NP_057245</a> <a href="#">Entrez Gene 51146 Human</a> <a href="#">Q9UNA3</a>
Background:	This gene encodes a protein from the glycosyltransferase 32 family. The enzyme catalyzes the transfer of N-acetylglucosamine (GlcNAc) to core 2 branched O-glycans. It forms a unique glycan, GlcNAc $\alpha$ 1 $\rightarrow$ 4Gal $\beta$ $\rightarrow$ R and is largely associated with the Golgi apparatus membrane. [provided by RefSeq]
Synonyms:	alpha4GnT

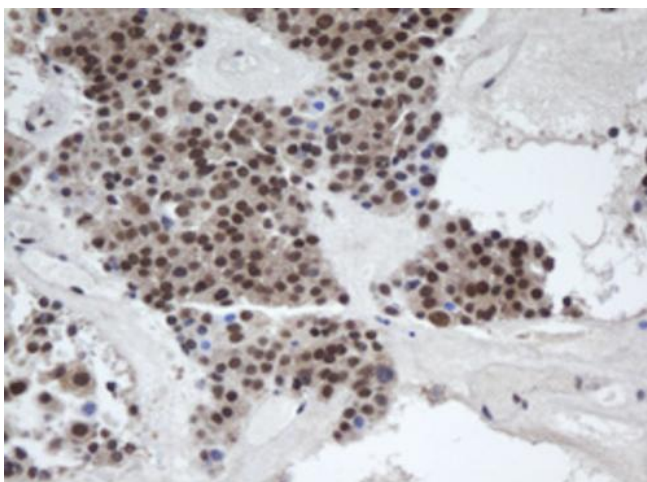

[View online »](#)

Protein Families: Transmembrane

## Product images:



HEK293T cells were transfected with the pCMV6-ENTRY control (Cat# [PS100001], Left lane) or pCMV6-ENTRY A4GNT (Cat# [RC221256], Right lane) cDNA for 48 hrs and lysed. Equivalent amounts of cell lysates (5 ug per lane) were separated by SDS-PAGE and immunoblotted with anti-A4GNT (Cat# [TA800400]). Positive lysates [LY414153] (100ug) and [LC414153] (20ug) can be purchased separately from OriGene.



Immunohistochemical staining of paraffin-embedded Carcinoma of Human pancreas tissue using anti-A4GNT mouse monoclonal antibody. Heat-induced epitope retrieval by EDTA solution buffer pH 8.0 at 120°C for 3 min.