

Product datasheet for **TA800353BM**

Factor XIIIa (F13A1) Mouse Monoclonal Antibody (HRP conjugated) [Clone ID: OTI3F1]

Product data:

Product Type:	Primary Antibodies
Clone Name:	OTI3F1
Applications:	IHC, WB
Recommended Dilution:	WB 1:2000, IHC 1:150
Reactivity:	Human, Mouse, Rat
Host:	Mouse
Isotype:	IgG2a
Clonality:	Monoclonal
Immunogen:	Full length human recombinant protein of human F13A1 (NP_000120) produced in HEK293T cell.
Formulation:	PBS (pH 7.3) containing 1% BSA, 50% glycerol.
Concentration:	0.5 mg/ml
Purification:	Purified from mouse ascites fluids or tissue culture supernatant by affinity chromatography (protein A/G)
Conjugation:	HRP
Storage:	Store at -20°C as received.
Stability:	Stable for 12 months from date of receipt.
Predicted Protein Size:	79.2 kDa
Gene Name:	coagulation factor XIII A chain
Database Link:	NP_000120 Entrez Gene 60327 Rat Entrez Gene 74145 Mouse Entrez Gene 2162 Human P00488



[View online »](#)

Background:

This gene encodes the coagulation factor XIII A subunit. Coagulation factor XIII is the last zymogen to become activated in the blood coagulation cascade. Plasma factor XIII is a heterotetramer composed of 2 A subunits and 2 B subunits. The A subunits have catalytic function, and the B subunits do not have enzymatic activity and may serve as plasma carrier molecules. Platelet factor XIII is comprised only of 2 A subunits, which are identical to those of plasma origin. Upon cleavage of the activation peptide by thrombin and in the presence of calcium ion, the plasma factor XIII dissociates its B subunits and yields the same active enzyme, factor XIIIa, as platelet factor XIII. This enzyme acts as a transglutaminase to catalyze the formation of gamma-glutamyl-epsilon-lysine crosslinking between fibrin molecules, thus stabilizing the fibrin clot. It also crosslinks alpha-2-plasmin inhibitor, or fibronectin, to the alpha chains of fibrin. Factor XIII deficiency is classified into two categories: type I deficiency, characterized by the lack of both the A and B subunits; and type II deficiency, characterized by the lack of the A subunit alone. These defects can result in a lifelong bleeding tendency, defective wound healing, and habitual abortion. [provided by RefSeq]

Synonyms:

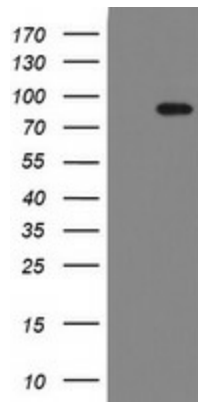
F13A

Protein Families:

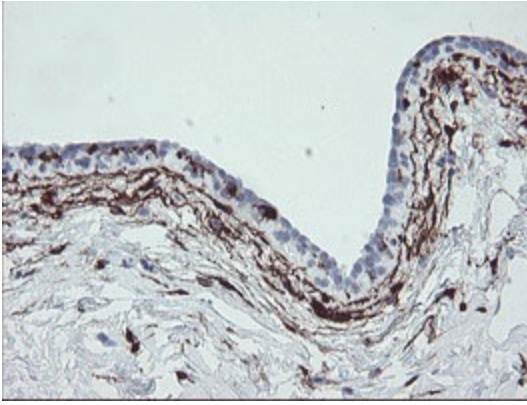
Druggable Genome, Secreted Protein

Protein Pathways:

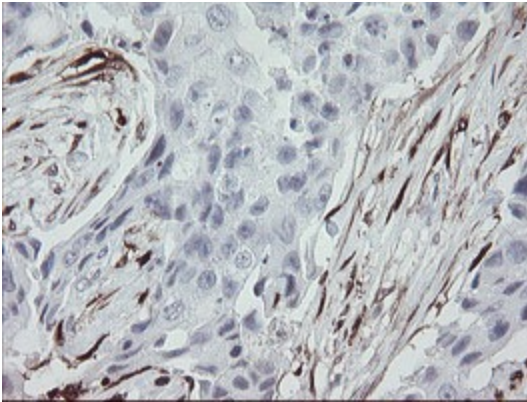
Complement and coagulation cascades

Product images:

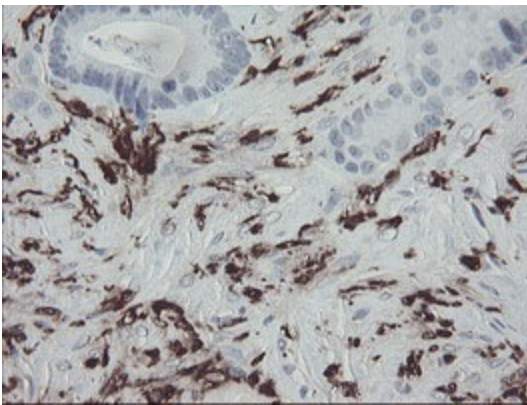
HEK293T cells were transfected with the pCMV6-ENTRY control (Left lane) or pCMV6-ENTRY F13A1 ([RC206464], Right lane) cDNA for 48 hrs and lysed. Equivalent amounts of cell lysates (5 ug per lane) were separated by SDS-PAGE and immunoblotted with anti-F13A1. Positive lysates [LY400044] (100ug) and [LC400044] (20ug) can be purchased separately from OriGene.



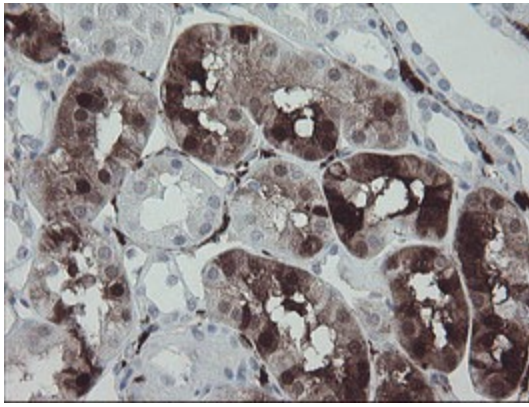
Immunohistochemical staining of paraffin-embedded Human breast tissue within the normal limits using anti-F13A1 mouse monoclonal antibody. (Heat-induced epitope retrieval by 10mM citric buffer, pH6.0, 100°C for 10min, [TA800353])



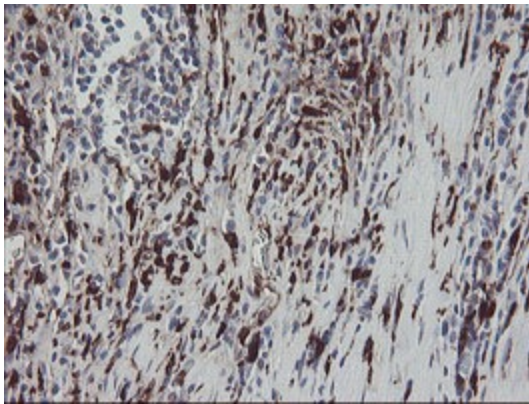
Immunohistochemical staining of paraffin-embedded Adenocarcinoma of Human breast tissue using anti-F13A1 mouse monoclonal antibody. (Heat-induced epitope retrieval by 10mM citric buffer, pH6.0, 100°C for 10min, [TA800353])



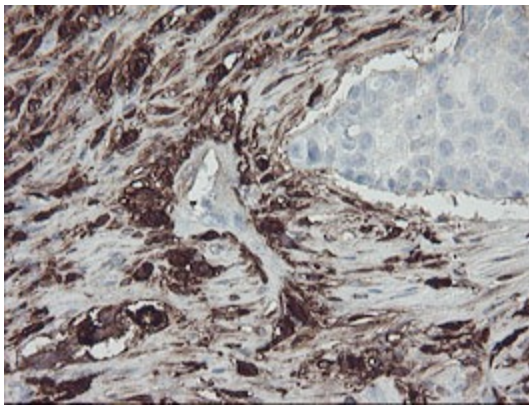
Immunohistochemical staining of paraffin-embedded Adenocarcinoma of Human colon tissue using anti-F13A1 mouse monoclonal antibody. (Heat-induced epitope retrieval by 10mM citric buffer, pH6.0, 100°C for 10min, [TA800353])



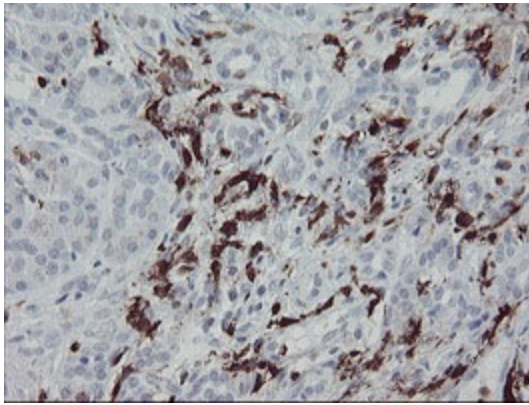
Immunohistochemical staining of paraffin-embedded Human Kidney tissue within the normal limits using anti-F13A1 mouse monoclonal antibody. (Heat-induced epitope retrieval by 10mM citric buffer, pH6.0, 100°C for 10min, [TA800353])



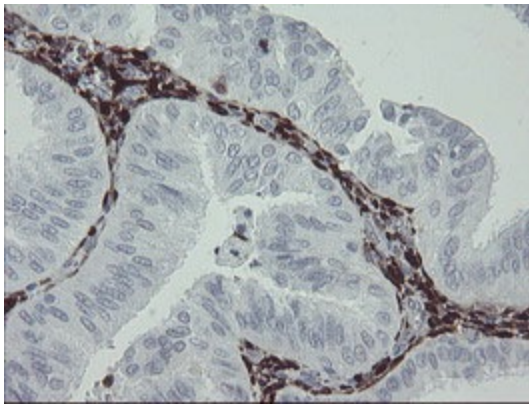
Immunohistochemical staining of paraffin-embedded Carcinoma of Human kidney tissue using anti-F13A1 mouse monoclonal antibody. (Heat-induced epitope retrieval by 10mM citric buffer, pH6.0, 100°C for 10min, [TA800353])



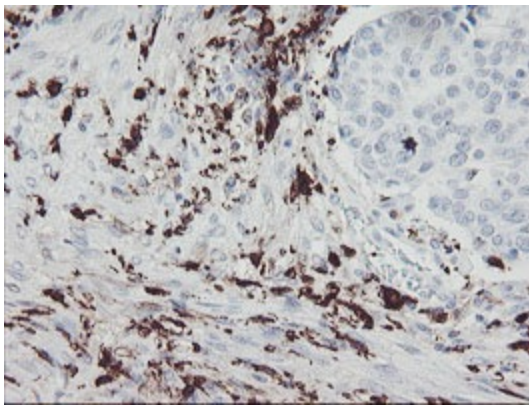
Immunohistochemical staining of paraffin-embedded Carcinoma of Human lung tissue using anti-F13A1 mouse monoclonal antibody. (Heat-induced epitope retrieval by 10mM citric buffer, pH6.0, 100°C for 10min, [TA800353])



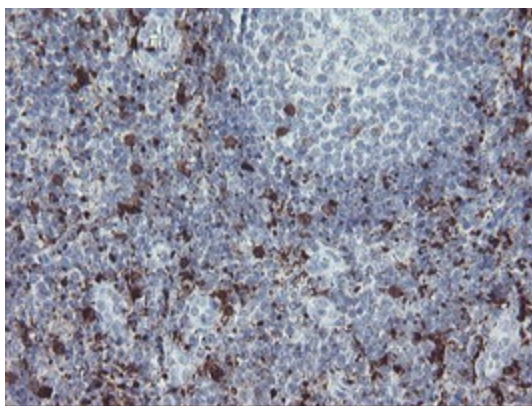
Immunohistochemical staining of paraffin-embedded Human pancreas tissue within the normal limits using anti-F13A1 mouse monoclonal antibody. (Heat-induced epitope retrieval by 10mM citric buffer, pH6.0, 100°C for 10min, [TA800353])



Immunohistochemical staining of paraffin-embedded Adenocarcinoma of Human endometrium tissue using anti-F13A1 mouse monoclonal antibody. (Heat-induced epitope retrieval by 10mM citric buffer, pH6.0, 100°C for 10min, [TA800353])



Immunohistochemical staining of paraffin-embedded Carcinoma of Human bladder tissue using anti-F13A1 mouse monoclonal antibody. (Heat-induced epitope retrieval by 10mM citric buffer, pH6.0, 100°C for 10min, [TA800353])



Immunohistochemical staining of paraffin-embedded Human tonsil within the normal limits using anti-F13A1 mouse monoclonal antibody. (Heat-induced epitope retrieval by 10mM citric buffer, pH6.0, 100°C for 10min, [TA800353])