

Product datasheet for **TA800348AM**

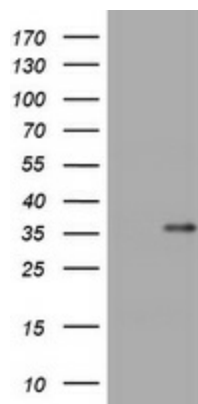
ZCCHC24 Mouse Monoclonal Antibody (Biotin conjugated) [Clone ID: OTI2E1]

Product data:

| | |
|-------------------------|--|
| Product Type: | Primary Antibodies |
| Clone Name: | OTI2E1 |
| Applications: | WB |
| Recommended Dilution: | WB 1:500 |
| Reactivity: | Human, Mouse, Rat |
| Host: | Mouse |
| Isotype: | IgG1 |
| Clonality: | Monoclonal |
| Immunogen: | Full length human recombinant protein of human ZCCHC24 (NP_699198) produced in E.coli. |
| Formulation: | PBS (pH 7.3) containing 1% BSA, 50% glycerol and 0.02% sodium azide. |
| Concentration: | 0.5 mg/ml |
| Purification: | Purified from mouse ascites fluids or tissue culture supernatant by affinity chromatography (protein A/G) |
| Conjugation: | Biotin |
| Storage: | Store at -20°C as received. |
| Stability: | Stable for 12 months from date of receipt. |
| Predicted Protein Size: | 26.8 kDa |
| Gene Name: | zinc finger CCHC-type containing 24 |
| Database Link: | NP_699198 Entrez Gene 71918 Mouse Entrez Gene 361104 Rat Entrez Gene 219654 Human Q8N2G6 |
| Synonyms: | C10orf56; Z3CXXC8 |



[View online »](#)

Product images:

HEK293T cells were transfected with the pCMV6-ENTRY control (Cat# [PS100001], Left lane) or pCMV6-ENTRY ZCCHC24 (Cat# [RC206200], Right lane) cDNA for 48 hrs and lysed. Equivalent amounts of cell lysates (5 ug per lane) were separated by SDS-PAGE and immunoblotted with anti-ZCCHC24 (Cat# [TA800348]). Positive lysates [LY407079] (100ug) and [LC407079] (20ug) can be purchased separately from OriGene.