

## Product datasheet for **TA800344S**

### NEIL1 Mouse Monoclonal Antibody [Clone ID: OTI1D1]

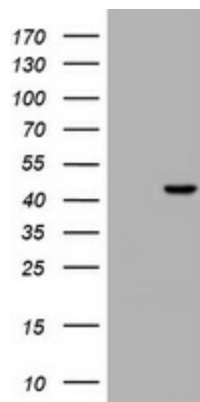
#### Product data:

Product Type:	Primary Antibodies
Clone Name:	OTI1D1
Applications:	WB
Recommended Dilution:	WB 1:200
Reactivity:	Human
Host:	Mouse
Isotype:	IgG1
Clonality:	Monoclonal
Immunogen:	Human recombinant protein fragment corresponding to amino acids 186-390 of human NEIL1 (NP_078884) produced in E.coli.
Formulation:	PBS (pH 7.3) containing 1% BSA, 50% glycerol and 0.02% sodium azide.
Concentration:	1 mg/ml
Purification:	Purified from mouse ascites fluids or tissue culture supernatant by affinity chromatography (protein A/G)
Conjugation:	Unconjugated
Storage:	Store at -20°C as received.
Stability:	Stable for 12 months from date of receipt.
Predicted Protein Size:	43.5 kDa
Gene Name:	nei like DNA glycosylase 1
Database Link:	<a href="#">NP_078884</a> <a href="#">Entrez Gene 79661 Human</a> <a href="#">Q96FI4</a>
Background:	This gene is a member of the Nei endonuclease VIII-like gene family which encodes DNA glycosylases. The encoded enzyme participates in the DNA repair pathway by initiating base excision repair by removing damaged bases, primarily oxidized pyrimidines. Multiple transcript variants encoding different isoforms have been found for this gene. [provided by RefSeq, Feb 2012]



[View online »](#)

**Synonyms:** FPG1; hFPG1; NEI1  
**Protein Families:** Druggable Genome  
**Protein Pathways:** Base excision repair

**Product images:**

HEK293T cells were transfected with the pCMV6-ENTRY control (Cat# [PS100001], Left lane) or pCMV6-ENTRY NEIL1 (Cat# [RC202329], Right lane) cDNA for 48 hrs and lysed. Equivalent amounts of cell lysates (5 ug per lane) were separated by SDS-PAGE and immunoblotted with anti-NEIL1 (Cat# [TA800344]). Positive lysates [LY411199] (100ug) and [LC411199] (20ug) can be purchased separately from OriGene.