

## Product datasheet for **TA800306BM**

### MIPEP Mouse Monoclonal Antibody (HRP conjugated) [Clone ID: OTI6F4]

#### Product data:

Product Type:	Primary Antibodies
Clone Name:	OTI6F4
Applications:	FC, IF, WB
Recommended Dilution:	WB 1:2000, IF 1:100, FLOW 1:100
Reactivity:	Human, Mouse, Rat
Host:	Mouse
Isotype:	IgG1
Clonality:	Monoclonal
Immunogen:	Human recombinant protein fragment corresponding to amino acids 174-516 of human MIPEP (NP_005923) produced in E.coli.
Formulation:	PBS (pH 7.3) containing 1% BSA, 50% glycerol.
Concentration:	0.5 mg/ml
Purification:	Purified from mouse ascites fluids or tissue culture supernatant by affinity chromatography (protein A/G)
Conjugation:	HRP
Storage:	Store at -20°C as received.
Stability:	Stable for 12 months from date of receipt.
Predicted Protein Size:	80.4 kDa
Gene Name:	mitochondrial intermediate peptidase
Database Link:	<a href="#">NP_005923</a> <a href="#">Entrez Gene 81684 Rat</a> <a href="#">Entrez Gene 4285 Human</a> <a href="#">Q99797</a>
Background:	The product of this gene performs the final step in processing a specific class of nuclear-encoded proteins targeted to the mitochondrial matrix or inner membrane. This protein is primarily involved in the maturation of oxidative phosphorylation (OXPHOS)-related proteins. This gene may contribute to the functional effects of frataxin deficiency and the clinical manifestations of Friedreich ataxia. [provided by RefSeq]. COMPLETENESS: complete on the 3' end.

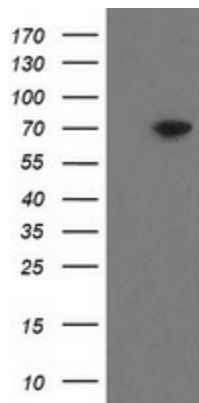


[View online »](#)

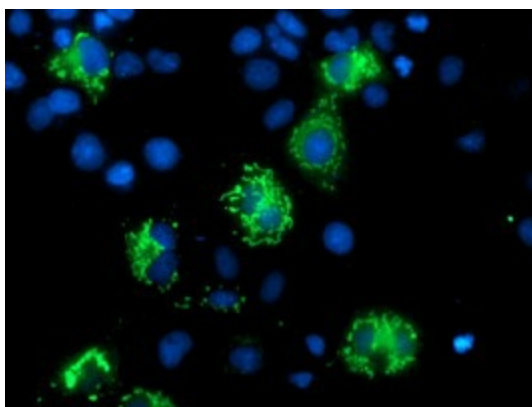
**Synonyms:** HMIP; MIP

**Protein Families:** Druggable Genome, Protease

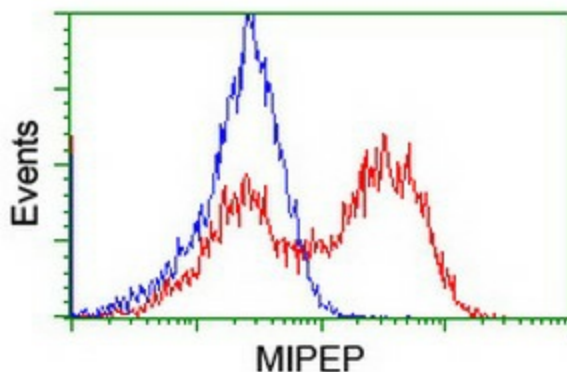
**Product images:**



HEK293T cells were transfected with the pCMV6-ENTRY control (Left lane) or pCMV6-ENTRY MIPEP ([RC202465], Right lane) cDNA for 48 hrs and lysed. Equivalent amounts of cell lysates (5 ug per lane) were separated by SDS-PAGE and immunoblotted with anti-MIPEP. Positive lysates [LY416973] (100ug) and [LC416973] (20ug) can be purchased separately from OriGene.



Anti-MIPEP mouse monoclonal antibody ([TA800306]) immunofluorescent staining of COS7 cells transiently transfected by pCMV6-ENTRY MIPEP ([RC202465]).



HEK293T cells transfected with either [RC202465] overexpress plasmid (Red) or empty vector control plasmid (Blue) were immunostained by anti-MIPEP antibody ([TA800306]), and then analyzed by flow cytometry.