

## Product datasheet for **TA800306**

### MIPEP Mouse Monoclonal Antibody [Clone ID: OTI6F4]

#### Product data:

|                         |  |
|-------------------------|--|
| Product Type:           | Primary Antibodies   |
| Clone Name:             | OTI6F4   |
| Applications:           | FC, IF, WB   |
| Recommended Dilution:   | WB 1:2000, IF 1:100, FLOW 1:100  |
| Reactivity:             | Human, Mouse, Rat  |
| Host:                   | Mouse  |
| Isotype:                | IgG1   |
| Clonality:              | Monoclonal   |
| Immunogen:              | Human recombinant protein fragment corresponding to amino acids 174-516 of human MIPEP (NP_005923) produced in E.coli.   |
| Formulation:            | PBS (pH 7.3) containing 1% BSA, 50% glycerol and 0.02% sodium azide.   |
| Concentration:          | 1 mg/ml  |
| Purification:           | Purified from mouse ascites fluids or tissue culture supernatant by affinity chromatography (protein A/G)  |
| Conjugation:            | Unconjugated   |
| Storage:                | Store at -20°C as received.  |
| Stability:              | Stable for 12 months from date of receipt.   |
| Predicted Protein Size: | 80.4 kDa   |
| Gene Name:              | mitochondrial intermediate peptidase   |
| Database Link:          | <a href="#">NP_005923</a><br><a href="#">Entrez Gene 81684 Rat</a> <a href="#">Entrez Gene 4285 Human</a><br><a href="#">Q99797</a>  |
| Background:             | The product of this gene performs the final step in processing a specific class of nuclear-encoded proteins targeted to the mitochondrial matrix or inner membrane. This protein is primarily involved in the maturation of oxidative phosphorylation (OXPHOS)-related proteins. This gene may contribute to the functional effects of frataxin deficiency and the clinical manifestations of Friedreich ataxia. [provided by RefSeq]. COMPLETENESS: complete on the 3' end. |

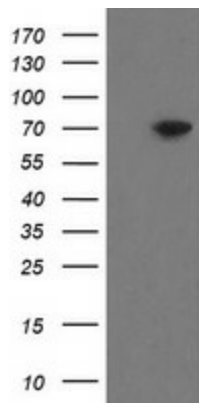


[View online »](#)

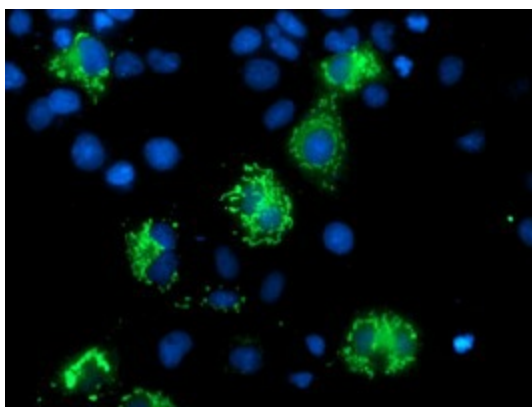
**Synonyms:** HMIP; MIP

**Protein Families:** Druggable Genome, Protease

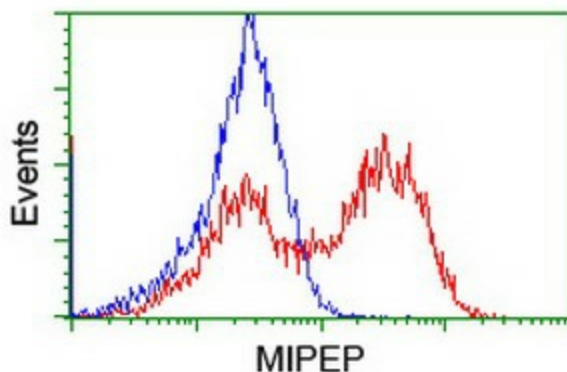
**Product images:**



HEK293T cells were transfected with the pCMV6-ENTRY control (Left lane) or pCMV6-ENTRY MIPEP ([RC202465], Right lane) cDNA for 48 hrs and lysed. Equivalent amounts of cell lysates (5 ug per lane) were separated by SDS-PAGE and immunoblotted with anti-MIPEP. Positive lysates [LY416973] (100ug) and [LC416973] (20ug) can be purchased separately from OriGene.



Anti-MIPEP mouse monoclonal antibody (TA800306) immunofluorescent staining of COS7 cells transiently transfected by pCMV6-ENTRY MIPEP ([RC202465]).



HEK293T cells transfected with either [RC202465] overexpress plasmid (Red) or empty vector control plasmid (Blue) were immunostained by anti-MIPEP antibody (TA800306), and then analyzed by flow cytometry.