

## Product datasheet for **TA800297BM**

### **ARL2BP Mouse Monoclonal Antibody (HRP conjugated) [Clone ID: OTI1A10]**

#### **Product data:**

<b>Product Type:</b>	Primary Antibodies
<b>Clone Name:</b>	OTI1A10
<b>Applications:</b>	FC, IF, IHC, WB
<b>Recommended Dilution:</b>	WB 1:2000, IHC 1:150, IF 1:100, FLOW 1:100
<b>Reactivity:</b>	Human, Mouse, Rat
<b>Host:</b>	Mouse
<b>Isotype:</b>	IgG1
<b>Clonality:</b>	Monoclonal
<b>Immunogen:</b>	Full length human recombinant protein of human ARL2BP (NP_036238) produced in E.coli.
<b>Formulation:</b>	PBS (pH 7.3) containing 1% BSA, 50% glycerol.
<b>Concentration:</b>	0.5 mg/ml
<b>Purification:</b>	Purified from mouse ascites fluids or tissue culture supernatant by affinity chromatography (protein A/G)
<b>Conjugation:</b>	HRP
<b>Storage:</b>	Store at -20°C as received.
<b>Stability:</b>	Stable for 12 months from date of receipt.
<b>Predicted Protein Size:</b>	18.6 kDa
<b>Gene Name:</b>	ADP ribosylation factor like GTPase 2 binding protein
<b>Database Link:</b>	<a href="#">NP_036238</a> <a href="#">Entrez Gene 107566 Mouse</a> <a href="#">Entrez Gene 498910 Rat</a> <a href="#">Entrez Gene 23568 Human</a> <a href="#">Q9Y2Y0</a>



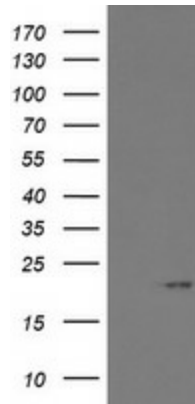
[View online »](#)

**Background:**

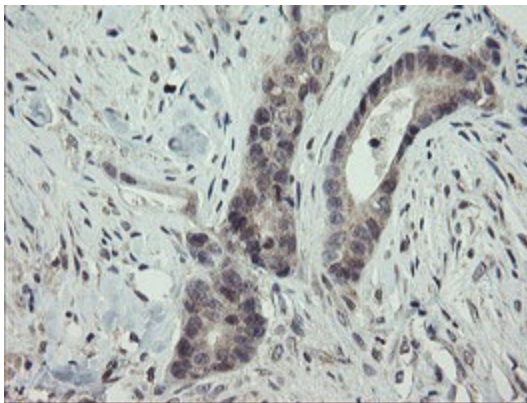
ADP-ribosylation factor (ARF)-like proteins (ARLs) comprise a functionally distinct group of the ARF family of RAS-related GTPases. The protein encoded by this gene binds to ARL2.GTP with high affinity but does not interact with ARL2.GDP, activated ARF, or RHO proteins. The lack of detectable membrane association of this protein or ARL2 upon activation of ARL2 is suggestive of actions distinct from those of the ARFs. This protein is considered to be the first ARL2-specific effector identified, due to its interaction with ARL2.GTP but lack of ARL2 GTPase-activating protein activity. [provided by RefSeq]. COMPLETENESS: complete on the 3' end.

**Synonyms:**

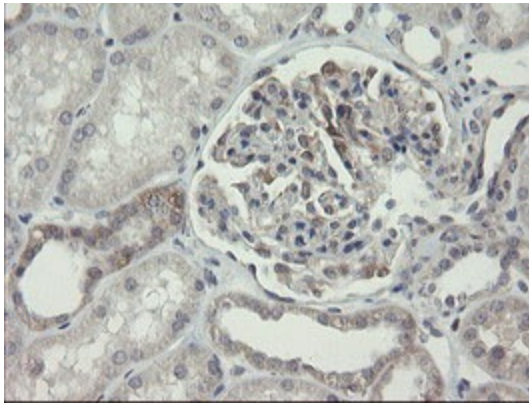
BART; BART1; RP66

**Product images:**


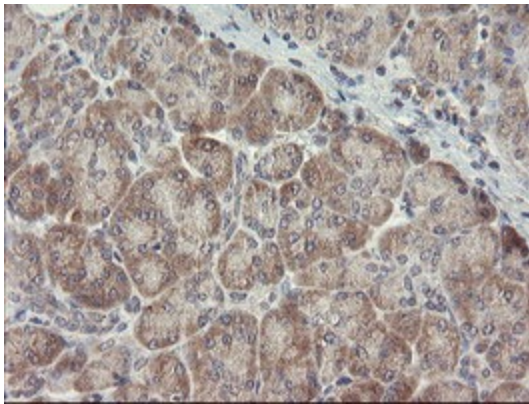
HEK293T cells were transfected with the pCMV6-ENTRY control (Cat# [PS100001], Left lane) or pCMV6-ENTRY ARL2BP (Cat# [RC200198], Right lane) cDNA for 48 hrs and lysed. Equivalent amounts of cell lysates (5 ug per lane) were separated by SDS-PAGE and immunoblotted with anti-ARL2BP(Cat# [TA800297]). Positive lysates [LY415976] (100ug) and [LC415976] (20ug) can be purchased separately from OriGene.



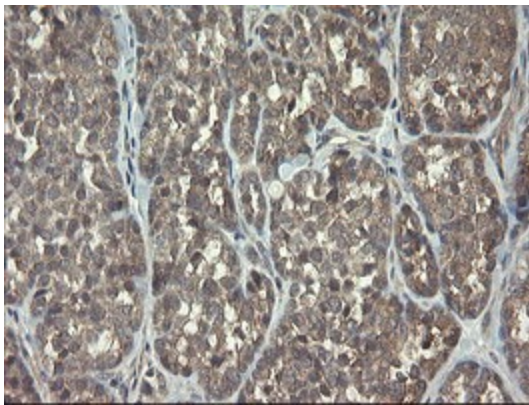
Immunohistochemical staining of paraffin-embedded Adenocarcinoma of Human colon tissue using anti-ARL2BP mouse monoclonal antibody. (Heat-induced epitope retrieval by 10mM citric buffer, pH6.0, 100°C for 10min, [TA800297])



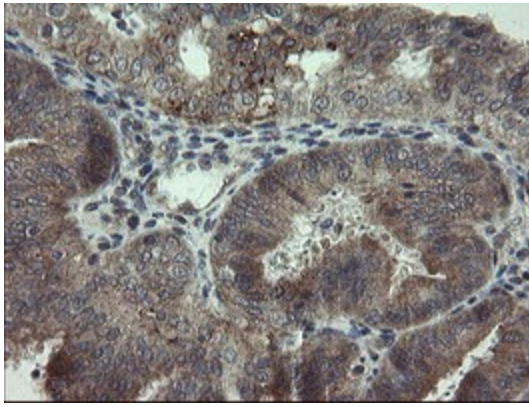
Immunohistochemical staining of paraffin-embedded Human Kidney tissue within the normal limits using anti-ARL2BP mouse monoclonal antibody. (Heat-induced epitope retrieval by 10mM citric buffer, pH6.0, 100°C for 10min, [TA800297])



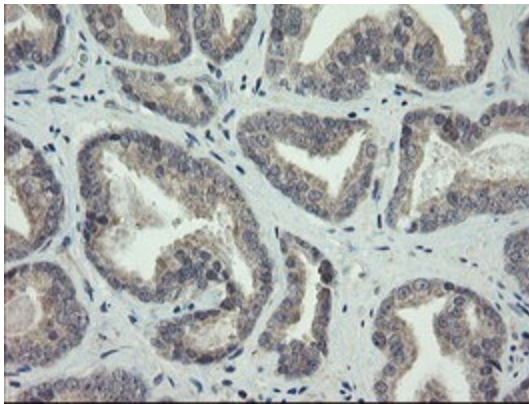
Immunohistochemical staining of paraffin-embedded Human pancreas tissue within the normal limits using anti-ARL2BP mouse monoclonal antibody. (Heat-induced epitope retrieval by 10mM citric buffer, pH6.0, 100°C for 10min, [TA800297])



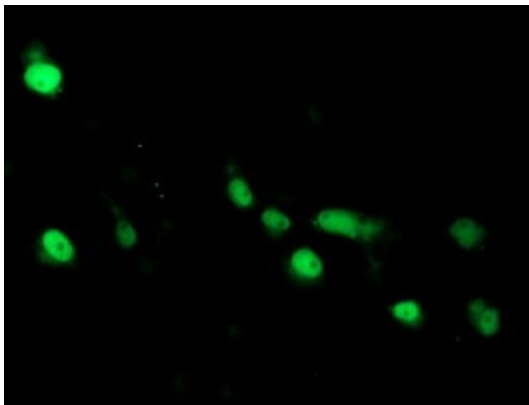
Immunohistochemical staining of paraffin-embedded Carcinoma of Human thyroid tissue using anti-ARL2BP mouse monoclonal antibody. (Heat-induced epitope retrieval by 10mM citric buffer, pH6.0, 100°C for 10min, [TA800297])



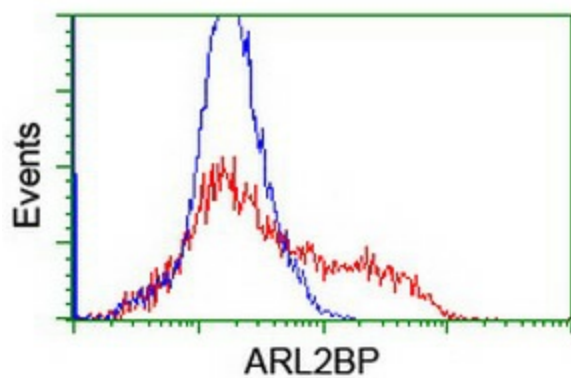
Immunohistochemical staining of paraffin-embedded Adenocarcinoma of Human endometrium tissue using anti-ARL2BP mouse monoclonal antibody. (Heat-induced epitope retrieval by 10mM citric buffer, pH6.0, 100°C for 10min, [TA800297])



Immunohistochemical staining of paraffin-embedded Carcinoma of Human prostate tissue using anti-ARL2BP mouse monoclonal antibody. (Heat-induced epitope retrieval by 10mM citric buffer, pH6.0, 100°C for 10min, [TA800297])



Anti-ARL2BP mouse monoclonal antibody ([TA800297]) immunofluorescent staining of COS7 cells transiently transfected by pCMV6-ENTRY ARL2BP ([RC200198]).



HEK293T cells transfected with either [RC200198] overexpress plasmid (Red) or empty vector control plasmid (Blue) were immunostained by anti-ARL2BP antibody ([TA800297]), and then analyzed by flow cytometry.