

Product datasheet for **TA800296AM**

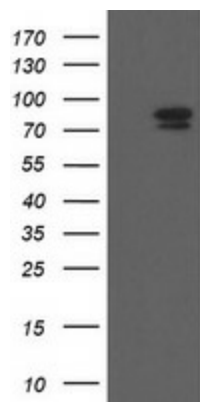
TLE 1 (TLE1) Mouse Monoclonal Antibody (Biotin conjugated) [Clone ID: OTI3H3]

Product data:

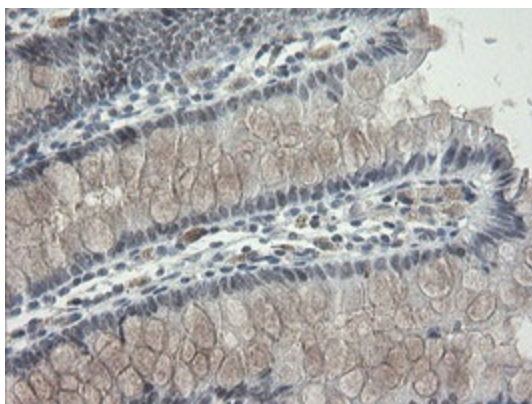
Product Type:	Primary Antibodies
Clone Name:	OTI3H3
Applications:	FC, IF, IHC, WB
Recommended Dilution:	WB 1:2000, IHC 1:150, IF 1:100, FLOW 1:100
Reactivity:	Human, Mouse, Rat
Host:	Mouse
Isotype:	IgG1
Clonality:	Monoclonal
Immunogen:	Human recombinant protein fragment corresponding to amino acids 180-460 of human TLE1 (NP_005068) produced in E.coli.
Formulation:	PBS (pH 7.3) containing 1% BSA, 50% glycerol and 0.02% sodium azide.
Concentration:	0.5 mg/ml
Purification:	Purified from mouse ascites fluids or tissue culture supernatant by affinity chromatography (protein A/G)
Conjugation:	Biotin
Storage:	Store at -20°C as received.
Stability:	Stable for 12 months from date of receipt.
Predicted Protein Size:	83 kDa
Gene Name:	transducin like enhancer of split 1
Database Link:	NP_005068 Entrez Gene 21885 Mouse Entrez Gene 362533 Rat Entrez Gene 7088 Human Q04724
Synonyms:	ESG; ESG1; GRG1
Protein Families:	Transcription Factors



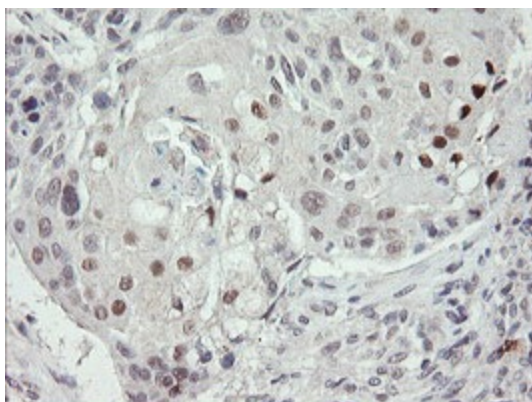
[View online »](#)

Product images:

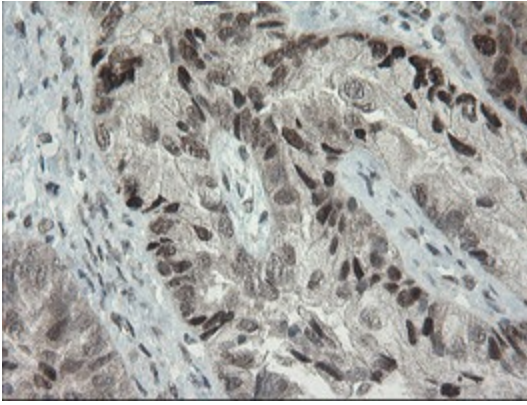
HEK293T cells were transfected with the pCMV6-ENTRY control (Left lane) or pCMV6-ENTRY TLE1 ([RC204037], Right lane) cDNA for 48 hrs and lysed. Equivalent amounts of cell lysates (5 ug per lane) were separated by SDS-PAGE and immunoblotted with anti-TLE1. Positive lysates [LY417561] (100ug) and [LC417561] (20ug) can be purchased separately from OriGene.



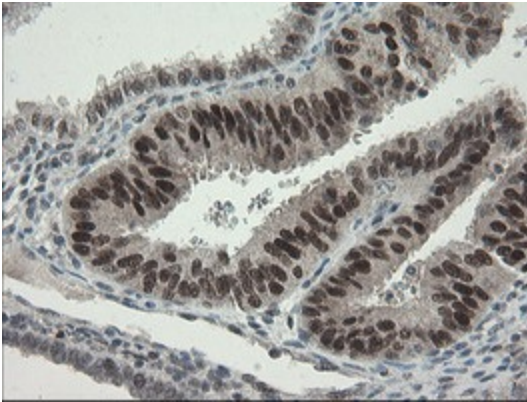
Immunohistochemical staining of paraffin-embedded Human colon tissue within the normal limits using anti-TLE1 mouse monoclonal antibody. (Heat-induced epitope retrieval by 10mM citric buffer, pH6.0, 100°C for 10min, [TA800296])



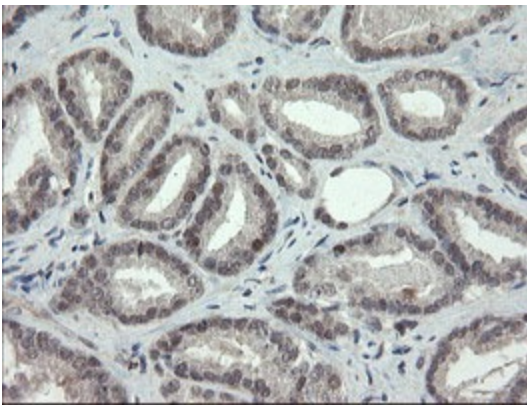
Immunohistochemical staining of paraffin-embedded Carcinoma of Human lung tissue using anti-TLE1 mouse monoclonal antibody. (Heat-induced epitope retrieval by 10mM citric buffer, pH6.0, 100°C for 10min, [TA800296])



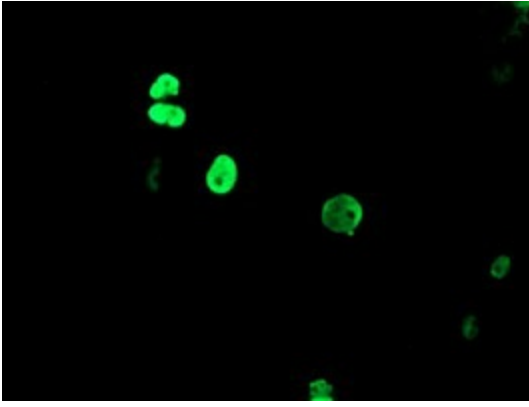
Immunohistochemical staining of paraffin-embedded Adenocarcinoma of Human ovary tissue using anti-TLE1 mouse monoclonal antibody. (Heat-induced epitope retrieval by 10mM citric buffer, pH6.0, 100°C for 10min, [TA800296])



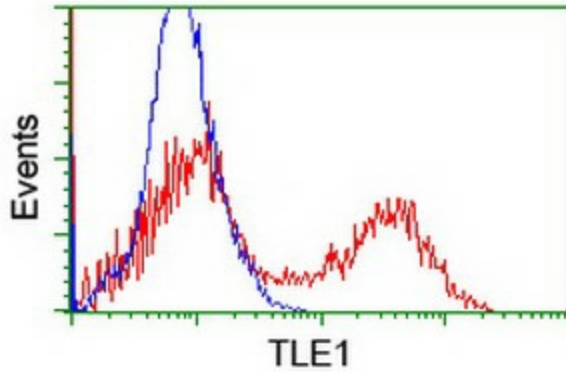
Immunohistochemical staining of paraffin-embedded Adenocarcinoma of Human endometrium tissue using anti-TLE1 mouse monoclonal antibody. (Heat-induced epitope retrieval by 10mM citric buffer, pH6.0, 100°C for 10min, [TA800296])



Immunohistochemical staining of paraffin-embedded Carcinoma of Human prostate tissue using anti-TLE1 mouse monoclonal antibody. (Heat-induced epitope retrieval by 10mM citric buffer, pH6.0, 100°C for 10min, [TA800296])



Anti-TLE1 mouse monoclonal antibody ([TA800296]) immunofluorescent staining of COS7 cells transiently transfected by pCMV6-ENTRY TLE1 ([RC204037]).



HEK293T cells transfected with either [RC204037] overexpress plasmid (Red) or empty vector control plasmid (Blue) were immunostained by anti-TLE1 antibody ([TA800296]), and then analyzed by flow cytometry.