

## Product datasheet for **TA800283**

### FBXO42 Mouse Monoclonal Antibody [Clone ID: OTI1H4]

#### Product data:

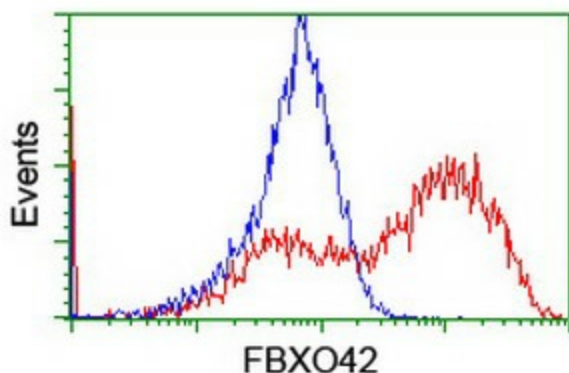
Product Type:	Primary Antibodies
Clone Name:	OTI1H4
Applications:	FC, IHC, WB
Recommended Dilution:	WB 1:2000, IHC 1:150, FLOW 1:100
Reactivity:	Human, Mouse, Rat
Host:	Mouse
Isotype:	IgG1
Clonality:	Monoclonal
Immunogen:	Human recombinant protein fragment corresponding to amino acids 356-717 of human FBXO42 (NP_061867) produced in E.coli.
Formulation:	PBS (pH 7.3) containing 1% BSA, 50% glycerol and 0.02% sodium azide.
Concentration:	1 mg/ml
Purification:	Purified from mouse ascites fluids or tissue culture supernatant by affinity chromatography (protein A/G)
Conjugation:	Unconjugated
Storage:	Store at -20°C as received.
Stability:	Stable for 12 months from date of receipt.
Predicted Protein Size:	77.7 kDa
Gene Name:	F-box protein 42
Database Link:	<a href="#">NP_061867</a> <a href="#">Entrez Gene 213499 Mouse</a> <a href="#">Entrez Gene 362646 Rat</a> <a href="#">Entrez Gene 54455 Human</a> <a href="#">Q6P3S6</a>
Background:	Members of the F-box protein family, such as FBXO42, are characterized by an approximately 40-amino acid F-box motif. SCF complexes, formed by SKP1 (SKP1A; MIM 601434), cullin (see CUL1; MIM 603134), and F-box proteins, act as protein-ubiquitin ligases. F-box proteins interact with SKP1 through the F box, and they interact with ubiquitination targets through other protein interaction domains (Jin et al., 2004 [PubMed 15520277]). [supplied by OMIM]



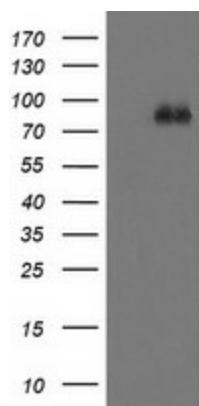
[View online »](#)

Synonyms: Fbx42; JFK  
 Protein Families: Druggable Genome

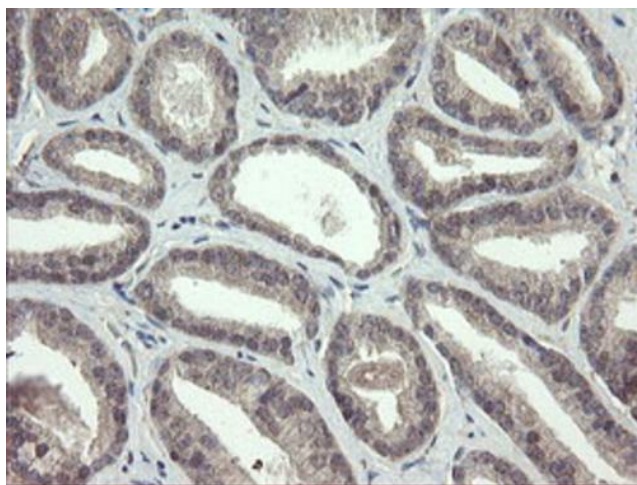
**Product images:**



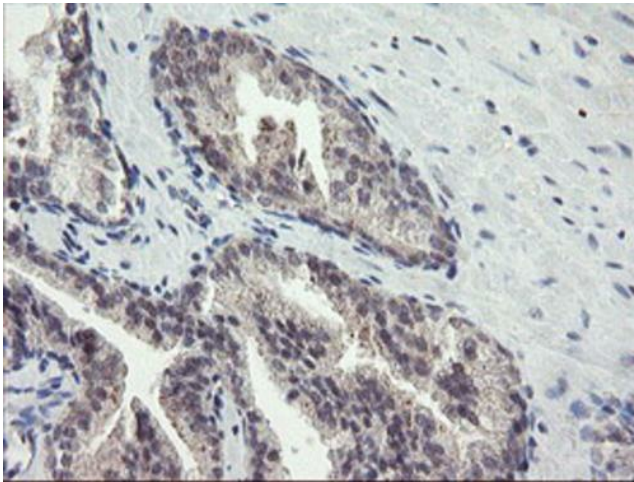
HEK293T cells transfected with either [RC209600] overexpress plasmid (Red) or empty vector control plasmid (Blue) were immunostained by anti-FBXO42 antibody (TA800283), and then analyzed by flow cytometry.



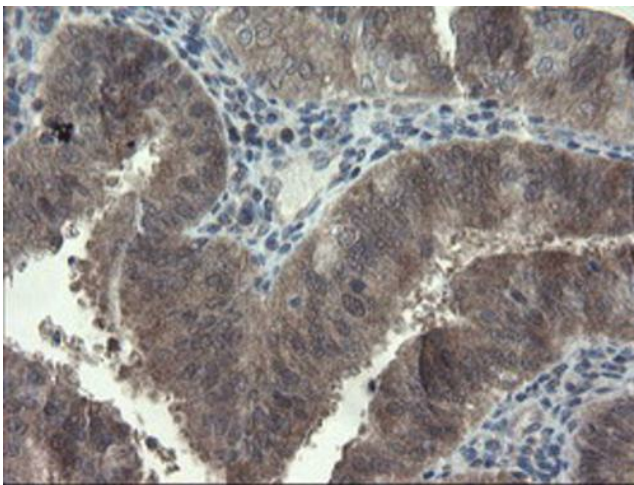
HEK293T cells were transfected with the pCMV6-ENTRY control (Left lane) or pCMV6-ENTRY FBXO42 ([RC209600], Right lane) cDNA for 48 hrs and lysed. Equivalent amounts of cell lysates (5 ug per lane) were separated by SDS-PAGE and immunoblotted with anti-FBXO42. Positive lysates [LY412832] (100ug) and [LC412832] (20ug) can be purchased separately from OriGene.



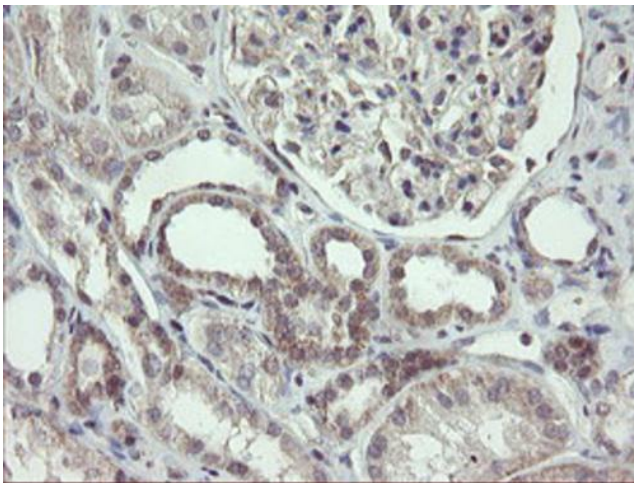
Immunohistochemical staining of paraffin-embedded Carcinoma of Human prostate tissue using anti-FBXO42 mouse monoclonal antibody. Heat-induced epitope retrieval by EDTA solution buffer pH 8.0 at 120°C for 3 min.



Immunohistochemical staining of paraffin-embedded Human prostate tissue within the normal limits using anti-FBXO42 mouse monoclonal antibody. Heat-induced epitope retrieval by EDTA solution buffer pH 8.0 at 120°C for 3 min.



Immunohistochemical staining of paraffin-embedded Human pancreas tissue within the normal limits using anti-FBXO42 mouse monoclonal antibody. Heat-induced epitope retrieval by EDTA solution buffer pH 8.0 at 120°C for 3 min.



Immunohistochemical staining of paraffin-embedded Human Kidney tissue within the normal limits using anti-FBXO42 mouse monoclonal antibody. Heat-induced epitope retrieval by EDTA solution buffer pH 8.0 at 120°C for 3 min.