

## Product datasheet for **TA800279S**

### MAFB Mouse Monoclonal Antibody [Clone ID: OTI1F1]

#### Product data:

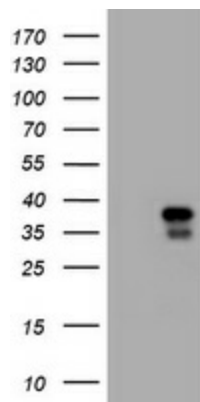
Product Type:	Primary Antibodies
Clone Name:	OTI1F1
Applications:	IHC, WB
Recommended Dilution:	WB 1:2000, IHC 1:150
Reactivity:	Human, Mouse, Rat
Host:	Mouse
Isotype:	IgG1
Clonality:	Monoclonal
Immunogen:	Human recombinant protein fragment corresponding to amino acids 32-320 of human MAFB (NP_005452) produced in E.coli.
Formulation:	PBS (pH 7.3) containing 1% BSA, 50% glycerol and 0.02% sodium azide.
Concentration:	1 mg/ml
Purification:	Purified from mouse ascites fluids or tissue culture supernatant by affinity chromatography (protein A/G)
Conjugation:	Unconjugated
Storage:	Store at -20°C as received.
Stability:	Stable for 12 months from date of receipt.
Predicted Protein Size:	35.6 kDa
Gene Name:	MAF bZIP transcription factor B
Database Link:	<a href="#">NP_005452</a> <a href="#">Entrez Gene 16658 Mouse</a> <a href="#">Entrez Gene 54264 Rat</a> <a href="#">Entrez Gene 9935 Human</a> <a href="#">Q9Y5Q3</a>
Background:	The protein encoded by this gene is a basic leucine zipper (bZIP) transcription factor that plays an important role in the regulation of lineage-specific hematopoiesis. The encoded nuclear protein represses ETS1-mediated transcription of erythroid-specific genes in myeloid cells. This gene contains no introns. [provided by RefSeq, Jul 2008]
Synonyms:	DURS3; KRML; MCTO



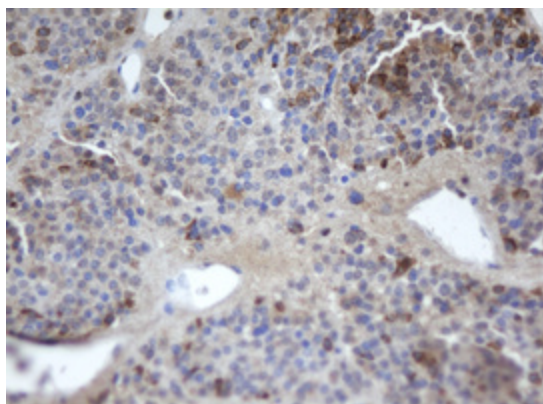
[View online »](#)

Protein Families: Druggable Genome, Transcription Factors

### Product images:



HEK293T cells were transfected with the pCMV6-ENTRY control (Left lane) or pCMV6-ENTRY MAFB ([RC207311], Right lane) cDNA for 48 hrs and lysed. Equivalent amounts of cell lysates (5 ug per lane) were separated by SDS-PAGE and immunoblotted with anti-MAFB. Positive lysates [LY401676] (100ug) and [LC401676] (20ug) can be purchased separately from OriGene.



Immunohistochemical staining of paraffin-embedded Carcinoma of Human pancreas tissue using anti-MAFB mouse monoclonal antibody. (Heat-induced epitope retrieval by 10mM citric buffer, pH6.0, 120°C for 3min, [TA800279])