

Product datasheet for **TA800276M**

RFC2 Mouse Monoclonal Antibody [Clone ID: OTI5A1]

Product data:

Product Type:	Primary Antibodies
Clone Name:	OTI5A1
Applications:	FC, IHC, WB
Recommended Dilution:	WB 1:2000, IHC 1:150, FLOW 1:100
Reactivity:	Human, Mouse, Rat
Host:	Mouse
Isotype:	IgG1
Clonality:	Monoclonal
Immunogen:	Human recombinant protein fragment corresponding to amino acids 1-234 of human RFC2 (NP_002905) produced in E.coli.
Formulation:	PBS (pH 7.3) containing 1% BSA, 50% glycerol and 0.02% sodium azide.
Concentration:	1 mg/ml
Purification:	Purified from mouse ascites fluids or tissue culture supernatant by affinity chromatography (protein A/G)
Conjugation:	Unconjugated
Storage:	Store at -20°C as received.
Stability:	Stable for 12 months from date of receipt.
Predicted Protein Size:	35.1 kDa
Gene Name:	replication factor C subunit 2
Database Link:	NP_002905 Entrez Gene 19718 Mouse Entrez Gene 116468 Rat Entrez Gene 5982 Human P35250



[View online »](#)

Background:

The elongation of primed DNA templates by DNA polymerase delta and epsilon requires the action of the accessory proteins, proliferating cell nuclear antigen (PCNA) and replication factor C (RFC). RFC, also called activator 1, is a protein complex consisting of five distinct subunits of 145, 40, 38, 37, and 36.5 kD. This gene encodes the 40 kD subunit, which has been shown to be responsible for binding ATP. Deletion of this gene has been associated with Williams syndrome. Alternatively spliced transcript variants encoding distinct isoforms have been described. [provided by RefSeq]

Synonyms:

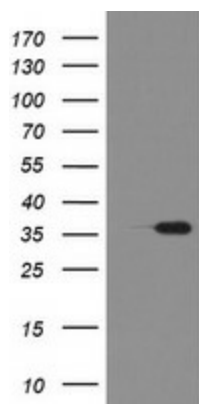
RFC40

Protein Families:

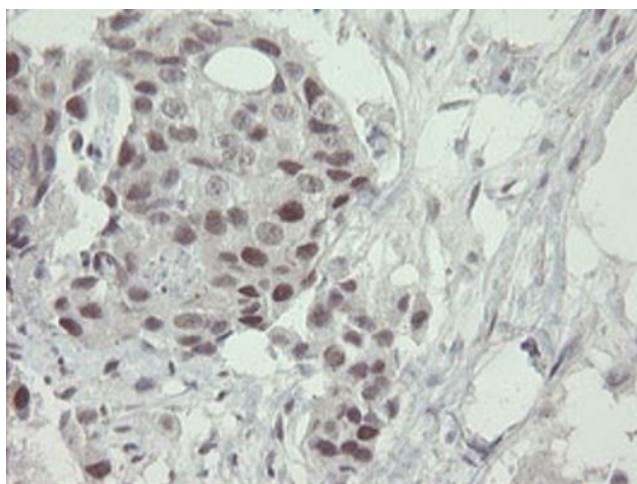
Druggable Genome, Stem cell - Pluripotency

Protein Pathways:

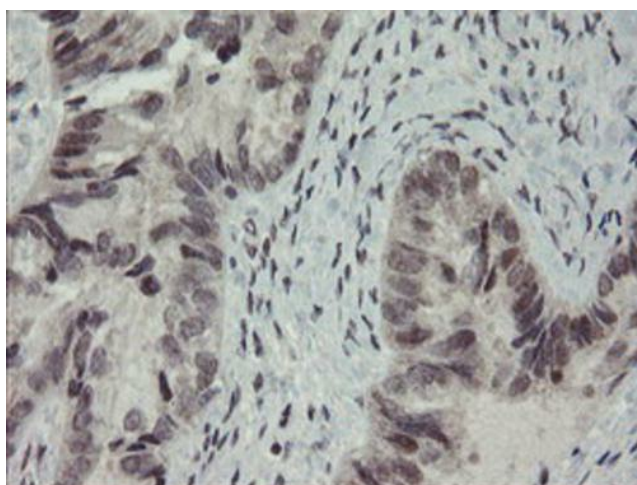
DNA replication, Mismatch repair, Nucleotide excision repair

Product images:


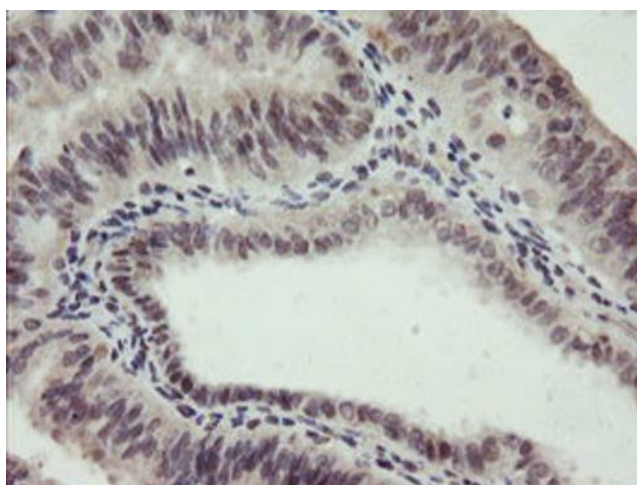
HEK293T cells were transfected with the pCMV6-ENTRY control (Left lane) or pCMV6-ENTRY RFC2 ([RC201138], Right lane) cDNA for 48 hrs and lysed. Equivalent amounts of cell lysates (5 ug per lane) were separated by SDS-PAGE and immunoblotted with anti-RFC2. Positive lysates [LY419017] (100ug) and [LC419017] (20ug) can be purchased separately from OriGene.



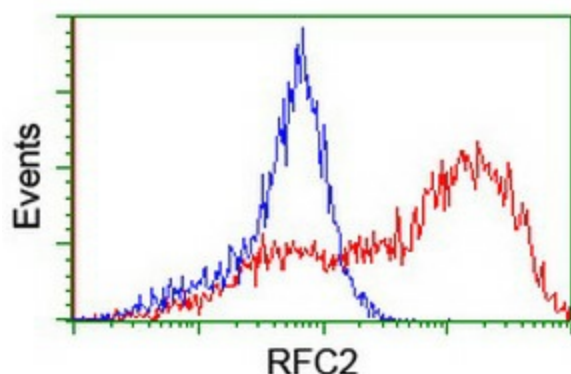
Immunohistochemical staining of paraffin-embedded Adenocarcinoma of Human breast tissue using anti-RFC2 mouse monoclonal antibody. Heat-induced epitope retrieval by EDTA solution buffer pH 8.0 at 120°C for 3 min.



Immunohistochemical staining of paraffin-embedded Adenocarcinoma of Human ovary tissue using anti-RFC2 mouse monoclonal antibody. Heat-induced epitope retrieval by EDTA solution buffer pH 8.0 at 120°C for 3 min.



Immunohistochemical staining of paraffin-embedded Adenocarcinoma of Human endometrium tissue using anti-RFC2 mouse monoclonal antibody. Heat-induced epitope retrieval by EDTA solution buffer pH 8.0 at 120°C for 3 min.



HEK293T cells transfected with either [RC201138] overexpress plasmid (Red) or empty vector control plasmid (Blue) were immunostained by anti-RFC2 antibody ([TA800276]), and then analyzed by flow cytometry.