

## Product datasheet for **TA800256S**

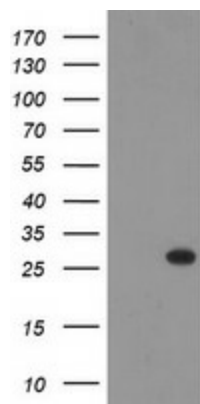
### THAP6 Mouse Monoclonal Antibody [Clone ID: OTI5G2]

#### Product data:

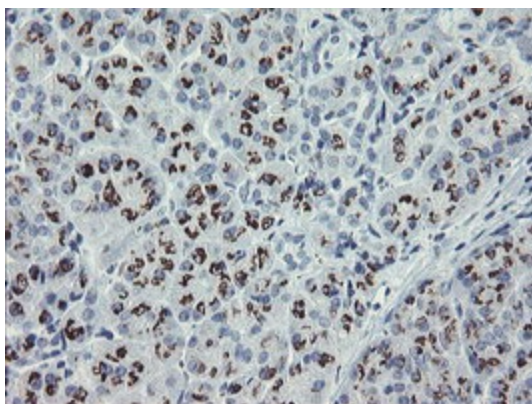
|                         |  |
|-------------------------|--|
| Product Type:           | Primary Antibodies   |
| Clone Name:             | OTI5G2   |
| Applications:           | IHC, WB  |
| Recommended Dilution:   | WB 1:2000, IHC 1:150   |
| Reactivity:             | Human, Rat   |
| Host:                   | Mouse  |
| Isotype:                | IgG2a  |
| Clonality:              | Monoclonal   |
| Immunogen:              | Full length human recombinant protein of human THAP6 (NP_653322) produced in E.coli.   |
| Formulation:            | PBS (pH 7.3) containing 1% BSA, 50% glycerol and 0.02% sodium azide.   |
| Concentration:          | 1 mg/ml  |
| Purification:           | Purified from mouse ascites fluids or tissue culture supernatant by affinity chromatography (protein A/G)                              |
| Conjugation:            | Unconjugated   |
| Storage:                | Store at -20°C as received.  |
| Stability:              | Stable for 12 months from date of receipt.   |
| Predicted Protein Size: | 25.5 kDa   |
| Gene Name:              | THAP domain containing 6   |
| Database Link:          | <a href="#">NP_653322</a><br><a href="#">Entrez Gene 305244 Rat</a> <a href="#">Entrez Gene 152815 Human</a><br><a href="#">Q8TBB0</a> |
| Synonyms:               | MGC30052   |



[View online »](#)

**Product images:**

HEK293T cells were transfected with the pCMV6-ENTRY control (Cat# [PS100001], Left lane) or pCMV6-ENTRY THAP6 (Cat# [RC205789], Right lane) cDNA for 48 hrs and lysed. Equivalent amounts of cell lysates (5 ug per lane) were separated by SDS-PAGE and immunoblotted with anti-THAP6 (Cat# [TA800256]). Positive lysates [LY408149] (100ug) and [LC408149] (20ug) can be purchased separately from OriGene.



Immunohistochemical staining of paraffin-embedded Human pancreas tissue within the normal limits using anti-THAP6 mouse monoclonal antibody. (Heat-induced epitope retrieval by 10mM citric buffer, pH6.0, 100°C for 10min, [TA800256])