

## Product datasheet for **TA800245AM**

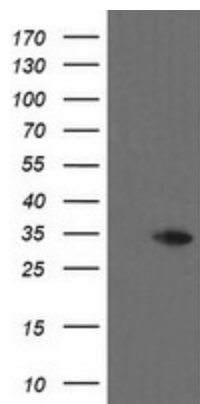
### THAP6 Mouse Monoclonal Antibody (Biotin conjugated) [Clone ID: OTI1E10]

#### Product data:

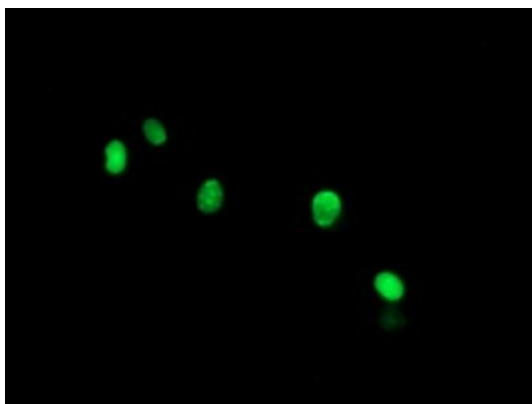
Product Type:	Primary Antibodies
Clone Name:	OTI1E10
Applications:	IF, WB
Recommended Dilution:	WB 1:2000, IF 1:100
Reactivity:	Human, Rat
Host:	Mouse
Isotype:	IgG1
Clonality:	Monoclonal
Immunogen:	Full length human recombinant protein of human THAP6 (NP_653322) produced in E.coli.
Formulation:	PBS (pH 7.3) containing 1% BSA, 50% glycerol and 0.02% sodium azide.
Concentration:	0.5 mg/ml
Purification:	Purified from mouse ascites fluids or tissue culture supernatant by affinity chromatography (protein A/G)
Conjugation:	Biotin
Storage:	Store at -20°C as received.
Stability:	Stable for 12 months from date of receipt.
Predicted Protein Size:	25.5 kDa
Gene Name:	THAP domain containing 6
Database Link:	<a href="#">NP_653322</a> <a href="#">Entrez Gene 305244 Rat</a> <a href="#">Entrez Gene 152815 Human</a> <a href="#">Q8TBB0</a>
Synonyms:	MGC30052



[View online »](#)

**Product images:**

HEK293T cells were transfected with the pCMV6-ENTRY control (Left lane) or pCMV6-ENTRY THAP6 ([RC205789], Right lane) cDNA for 48 hrs and lysed. Equivalent amounts of cell lysates (5 ug per lane) were separated by SDS-PAGE and immunoblotted with anti-THAP6. Positive lysates [LY408149] (100ug) and [LC408149] (20ug) can be purchased separately from OriGene.



Anti-THAP6 mouse monoclonal antibody ([TA800245]) immunofluorescent staining of COS7 cells transiently transfected by pCMV6-ENTRY THAP6 ([RC205789]).