

Product datasheet for **TA800234BM**

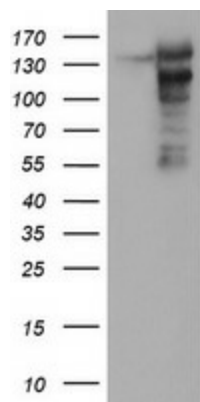
AGTPBP1 Mouse Monoclonal Antibody (HRP conjugated) [Clone ID: OTI9A3]

Product data:

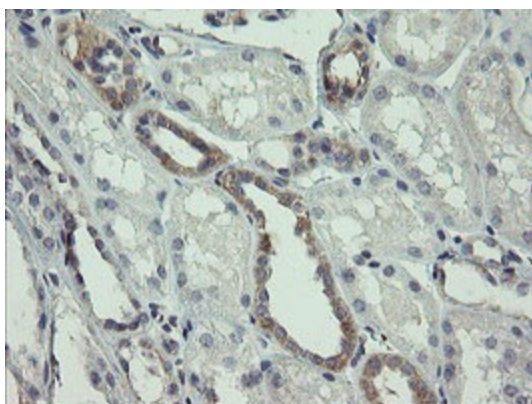
Product Type:	Primary Antibodies
Clone Name:	OTI9A3
Applications:	IHC, WB
Recommended Dilution:	WB 1:4000, IHC 1:150
Reactivity:	Human, Mouse, Rat
Host:	Mouse
Isotype:	IgG1
Clonality:	Monoclonal
Immunogen:	Human recombinant protein fragment corresponding to amino acids 368-753 of human AGTPBP1 (NP_056054) produced in E.coli.
Formulation:	PBS (pH 7.3) containing 1% BSA, 50% glycerol.
Concentration:	0.5 mg/ml
Purification:	Purified from mouse ascites fluids or tissue culture supernatant by affinity chromatography (protein A/G)
Conjugation:	HRP
Storage:	Store at -20°C as received.
Stability:	Stable for 12 months from date of receipt.
Gene Name:	ATP/GTP binding protein 1
Database Link:	NP_056054 Entrez Gene 67269 Mouse Entrez Gene 290986 Rat Entrez Gene 23287 Human Q9UPW5
Background:	NNA1 is a zinc carboxypeptidase that contains nuclear localization signals and an ATP/GTP-binding motif that was initially cloned from regenerating spinal cord neurons of the mouse. [supplied by OMIM]. COMPLETENESS: complete on the 3' end.
Synonyms:	CCP1; NNA1
Protein Families:	Protease



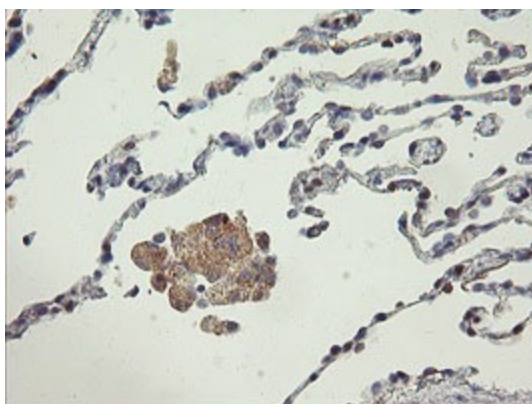
[View online »](#)

Product images:

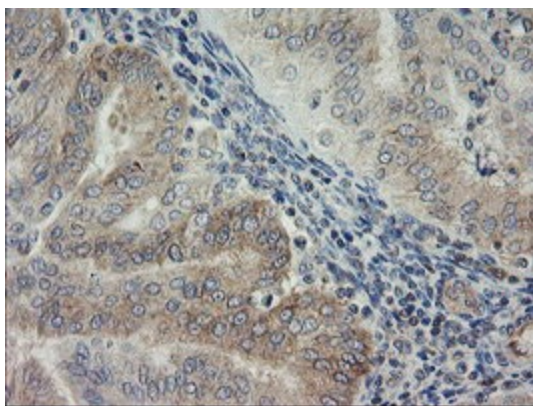
HEK293T cells were transfected with the pCMV6-ENTRY control (Cat# [PS100001], Left lane) or pCMV6-ENTRY AGTPBP1 (Cat# [RC209238], Right lane) cDNA for 48 hrs and lysed. Equivalent amounts of cell lysates (5 ug per lane) were separated by SDS-PAGE and immunoblotted with anti-AGTPBP1 (Cat# [TA800234]). Positive lysates [LY414709] (100ug) and [LC414709] (20ug) can be purchased separately from OriGene.



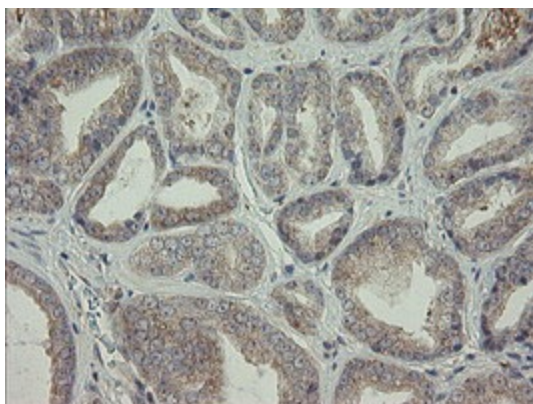
Immunohistochemical staining of paraffin-embedded Human Kidney tissue within the normal limits using anti-AGTPBP1 mouse monoclonal antibody. (Heat-induced epitope retrieval by 10mM citric buffer, pH6.0, 100°C for 10min, [TA800234])



Immunohistochemical staining of paraffin-embedded Human lung tissue within the normal limits using anti-AGTPBP1 mouse monoclonal antibody. (Heat-induced epitope retrieval by 10mM citric buffer, pH6.0, 100°C for 10min, [TA800234])



Immunohistochemical staining of paraffin-embedded Adenocarcinoma of Human endometrium tissue using anti-AGTPBP1 mouse monoclonal antibody. (Heat-induced epitope retrieval by 10mM citric buffer, pH6.0, 100°C for 10min, [TA800234])



Immunohistochemical staining of paraffin-embedded Carcinoma of Human prostate tissue using anti-AGTPBP1 mouse monoclonal antibody. (Heat-induced epitope retrieval by 10mM citric buffer, pH6.0, 100°C for 10min, [TA800234])