

## Product datasheet for **TA800230AM**

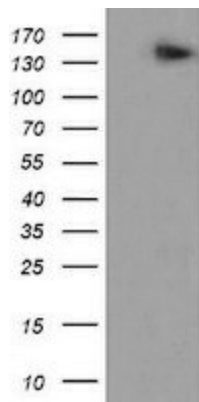
### AGTPBP1 Mouse Monoclonal Antibody (Biotin conjugated) [Clone ID: OTI9B8]

#### Product data:

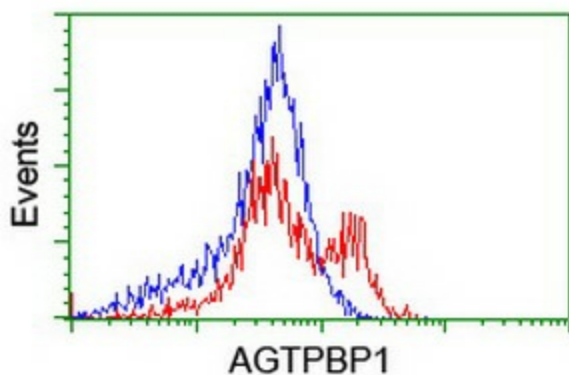
Product Type:	Primary Antibodies
Clone Name:	OTI9B8
Applications:	FC, WB
Recommended Dilution:	WB 1:2000, FLOW 1:100
Reactivity:	Human, Mouse, Rat
Host:	Mouse
Isotype:	IgG1
Clonality:	Monoclonal
Immunogen:	Human recombinant protein fragment corresponding to amino acids 368-753 of human AGTPBP1 (NP_056054) produced in E.coli.
Formulation:	PBS (pH 7.3) containing 1% BSA, 50% glycerol and 0.02% sodium azide.
Concentration:	0.5 mg/ml
Purification:	Purified from mouse ascites fluids or tissue culture supernatant by affinity chromatography (protein A/G)
Conjugation:	Biotin
Storage:	Store at -20°C as received.
Stability:	Stable for 12 months from date of receipt.
Gene Name:	ATP/GTP binding protein 1
Database Link:	<a href="#">NP_056054</a> <a href="#">Entrez Gene 67269 Mouse</a> <a href="#">Entrez Gene 290986 Rat</a> <a href="#">Entrez Gene 23287 Human</a> <a href="#">Q9UPW5</a>
Background:	NNA1 is a zinc carboxypeptidase that contains nuclear localization signals and an ATP/GTP-binding motif that was initially cloned from regenerating spinal cord neurons of the mouse. [supplied by OMIM]. COMPLETENESS: complete on the 3' end.
Synonyms:	CCP1; NNA1
Protein Families:	Protease



[View online »](#)

**Product images:**

HEK293T cells were transfected with the pCMV6-ENTRY control (Left lane) or pCMV6-ENTRY AGTPBP1 ([RC209238], Right lane) cDNA for 48 hrs and lysed. Equivalent amounts of cell lysates (5 ug per lane) were separated by SDS-PAGE and immunoblotted with anti-AGTPBP1. Positive lysates [LY414709] (100ug) and [LC414709] (20ug) can be purchased separately from OriGene.



HEK293T cells transfected with either [RC209238] overexpress plasmid (Red) or empty vector control plasmid (Blue) were immunostained by anti-AGTPBP1 antibody ([TA800230]), and then analyzed by flow cytometry.