

## Product datasheet for **TA800224AM**

### **SLUG (SNAI2) Mouse Monoclonal Antibody (Biotin conjugated) [Clone ID: OTI16G7]**

#### **Product data:**

Product Type:	Primary Antibodies
Clone Name:	OTI16G7
Applications:	IHC, WB
Recommended Dilution:	WB 1:2000, IHC 1:150
Reactivity:	Human, Mouse, Rat
Host:	Mouse
Isotype:	IgG1
Clonality:	Monoclonal
Immunogen:	Full length human recombinant protein of human SNAI2 (NP_003059) produced in E.coli.
Formulation:	PBS (pH 7.3) containing 1% BSA, 50% glycerol and 0.02% sodium azide.
Concentration:	0.5 mg/ml
Purification:	Purified from mouse ascites fluids or tissue culture supernatant by affinity chromatography (protein A/G)
Conjugation:	Biotin
Storage:	Store at -20°C as received.
Stability:	Stable for 12 months from date of receipt.
Predicted Protein Size:	29.8 kDa
Gene Name:	snail family transcriptional repressor 2
Database Link:	<a href="#">NP_003059</a> <a href="#">Entrez Gene 20583 Mouse</a> <a href="#">Entrez Gene 25554 Rat</a> <a href="#">Entrez Gene 6591 Human</a> <a href="#">O43623</a>
Background:	This gene encodes a member of the Snail family of C2H2-type zinc finger transcription factors. The encoded protein acts as a transcriptional repressor that binds to E-box motifs and is also likely to repress E-cadherin transcription in breast carcinoma. This protein is involved in epithelial-mesenchymal transitions and has antiapoptotic activity. Mutations in this gene may be associated with sporadic cases of neural tube defects. [provided by RefSeq]
Synonyms:	SLUG; SLUGH1; SNAIL2; WS2D

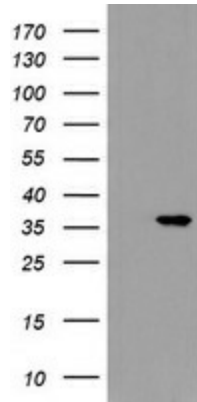


[View online »](#)

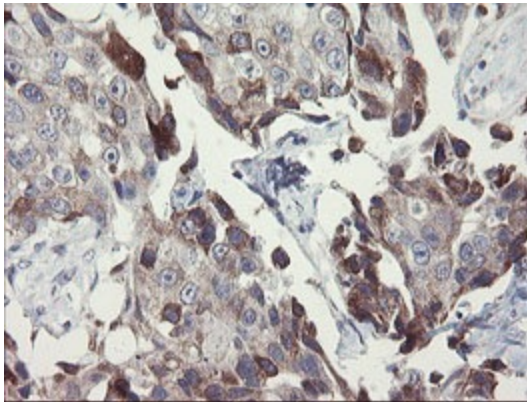
**Protein Families:** Druggable Genome, Transcription Factors

**Protein Pathways:** Adherens junction

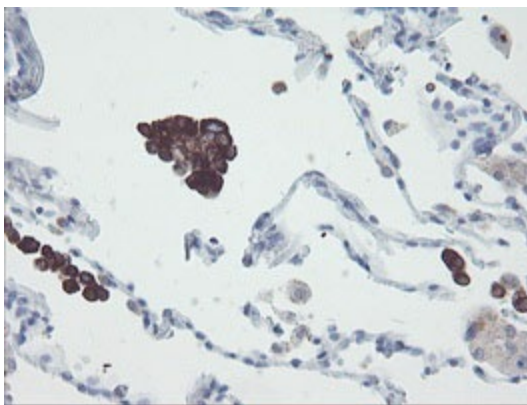
**Product images:**



HEK293T cells were transfected with the pCMV6-ENTRY control (Left lane) or pCMV6-ENTRY SNAI2 ([RC202365], Right lane) cDNA for 48 hrs and lysed. Equivalent amounts of cell lysates (5 ug per lane) were separated by SDS-PAGE and immunoblotted with anti-SNAI2. Positive lysates [LY401070] (100ug) and [LC401070] (20ug) can be purchased separately from OriGene.



Immunohistochemical staining of paraffin-embedded Adenocarcinoma of Human breast tissue using anti-SNAI2 mouse monoclonal antibody. (Heat-induced epitope retrieval by 10mM citric buffer, pH6.0, 100°C for 10min, [TA800224])



Immunohistochemical staining of paraffin-embedded Human lung tissue within the normal limits using anti-SNAI2 mouse monoclonal antibody. (Heat-induced epitope retrieval by 10mM citric buffer, pH6.0, 100°C for 10min, [TA800224])