

Product datasheet for **TA800210S**

FBXO42 Mouse Monoclonal Antibody [Clone ID: OTI2G7]

Product data:

Product Type:	Primary Antibodies
Clone Name:	OTI2G7
Applications:	FC, IHC, WB
Recommended Dilution:	WB 1:500~2000, IHC 1:150, FLOW 1:100
Reactivity:	Human, Mouse, Rat
Host:	Mouse
Isotype:	IgG1
Clonality:	Monoclonal
Immunogen:	Human recombinant protein fragment corresponding to amino acids 356-717 of human FBXO42 (NP_061867) produced in E.coli.
Formulation:	PBS (pH 7.3) containing 1% BSA, 50% glycerol and 0.02% sodium azide.
Concentration:	1 mg/ml
Purification:	Purified from mouse ascites fluids or tissue culture supernatant by affinity chromatography (protein A/G)
Conjugation:	Unconjugated
Storage:	Store at -20°C as received.
Stability:	Stable for 12 months from date of receipt.
Predicted Protein Size:	77.7 kDa
Gene Name:	F-box protein 42
Database Link:	NP_061867 Entrez Gene 213499 MouseEntrez Gene 362646 RatEntrez Gene 54455 Human Q6P3S6
Background:	Members of the F-box protein family, such as FBXO42, are characterized by an approximately 40-amino acid F-box motif. SCF complexes, formed by SKP1 (SKP1A; MIM 601434), cullin (see CUL1; MIM 603134), and F-box proteins, act as protein-ubiquitin ligases. F-box proteins interact with SKP1 through the F box, and they interact with ubiquitination targets through other protein interaction domains (Jin et al., 2004 [PubMed 15520277]). [supplied by OMIM, Dec 2010]

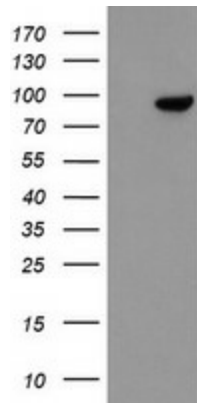


[View online »](#)

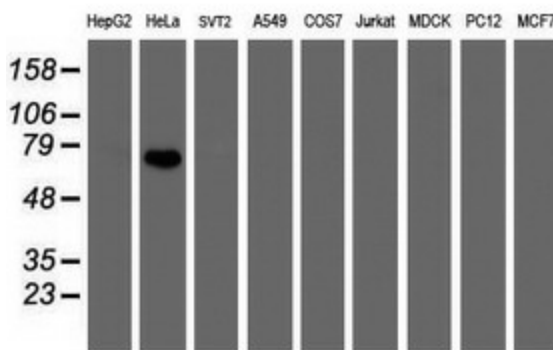
Synonyms: Fbx42; JFK

Protein Families: Druggable Genome

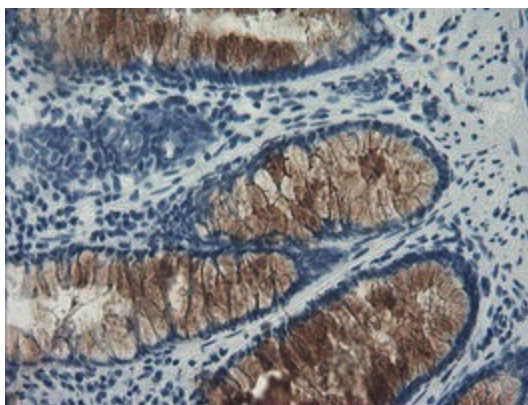
Product images:



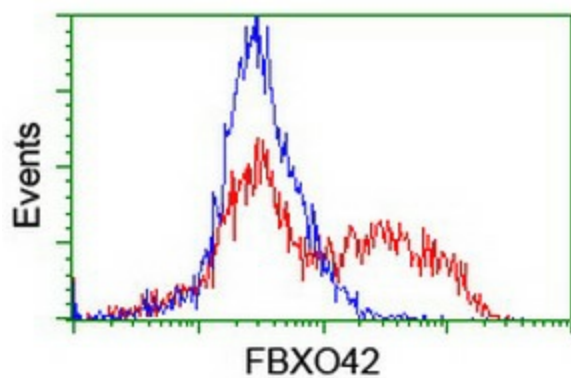
HEK293T cells were transfected with the pCMV6-ENTRY control (Cat# [PS100001], Left lane) or pCMV6-ENTRY FBXO42 (Cat# [RC209600], Right lane) cDNA for 48 hrs and lysed. Equivalent amounts of cell lysates (5 ug per lane) were separated by SDS-PAGE and immunoblotted with anti-FBXO42(Cat# [TA800210]). Positive lysates [LY412832] (100ug) and [LC412832] (20ug) can be purchased separately from OriGene.



Western blot analysis of extracts (35ug) from 9 different cell lines by using anti-FBXO42 monoclonal antibody (HepG2: human; HeLa: human; SVT2: mouse; A549: human; COS7: monkey; Jurkat: human; MDCK: canine; PC12: rat; MCF7: human).



Immunohistochemical staining of paraffin-embedded Human colon tissue within the normal limits using anti-FBXO42 mouse monoclonal antibody. (Heat-induced epitope retrieval by 10mM citric buffer, pH6.0, 100°C for 10min, [TA800210])



HEK293T cells transfected with either [RC209600] overexpress plasmid (Red) or empty vector control plasmid (Blue) were immunostained by anti-FBXO42 antibody ([TA800210]), and then analyzed by flow cytometry.