

## Product datasheet for **TA800209S**

### **FBXO42 Mouse Monoclonal Antibody [Clone ID: OTI1C1]**

#### **Product data:**

<b>Product Type:</b>	Primary Antibodies
<b>Clone Name:</b>	OTI1C1
<b>Applications:</b>	FC, WB
<b>Recommended Dilution:</b>	WB 1:2000, FLOW 1:100
<b>Reactivity:</b>	Human, Mouse, Rat
<b>Host:</b>	Mouse
<b>Isotype:</b>	IgG1
<b>Clonality:</b>	Monoclonal
<b>Immunogen:</b>	Human recombinant protein fragment corresponding to amino acids 356-717 of human FBXO42 (NP_061867) produced in E.coli.
<b>Formulation:</b>	PBS (pH 7.3) containing 1% BSA, 50% glycerol and 0.02% sodium azide.
<b>Concentration:</b>	1 mg/ml
<b>Purification:</b>	Purified from mouse ascites fluids or tissue culture supernatant by affinity chromatography (protein A/G)
<b>Conjugation:</b>	Unconjugated
<b>Storage:</b>	Store at -20°C as received.
<b>Stability:</b>	Stable for 12 months from date of receipt.
<b>Predicted Protein Size:</b>	77.7 kDa
<b>Gene Name:</b>	F-box protein 42
<b>Database Link:</b>	<a href="#">NP_061867</a> <a href="#">Entrez Gene 213499 Mouse</a> <a href="#">Entrez Gene 362646 Rat</a> <a href="#">Entrez Gene 54455 Human</a> <a href="#">Q6P3S6</a>
<b>Background:</b>	Members of the F-box protein family, such as FBXO42, are characterized by an approximately 40-amino acid F-box motif. SCF complexes, formed by SKP1 (SKP1A; MIM 601434), cullin (see CUL1; MIM 603134), and F-box proteins, act as protein-ubiquitin ligases. F-box proteins interact with SKP1 through the F box, and they interact with ubiquitination targets through other protein interaction domains (Jin et al., 2004 [PubMed 15520277]). [supplied by OMIM]

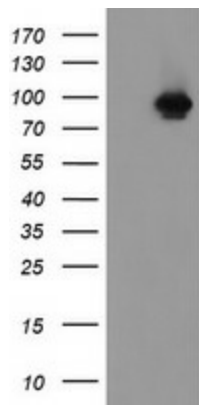


[View online »](#)

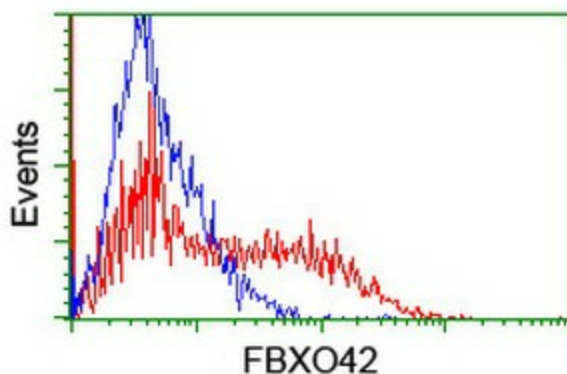
Synonyms: Fbx42; JFK

Protein Families: Druggable Genome

### Product images:



HEK293T cells were transfected with the pCMV6-ENTRY control (Left lane) or pCMV6-ENTRY FBXO42 ([RC209600], Right lane) cDNA for 48 hrs and lysed. Equivalent amounts of cell lysates (5 ug per lane) were separated by SDS-PAGE and immunoblotted with anti-FBXO42. Positive lysates [LY412832] (100ug) and [LC412832] (20ug) can be purchased separately from OriGene.



HEK293T cells transfected with either [RC209600] overexpress plasmid (Red) or empty vector control plasmid (Blue) were immunostained by anti-FBXO42 antibody ([TA800209]), and then analyzed by flow cytometry.