

## Product datasheet for **TA800206AM**

### **RBPMS Mouse Monoclonal Antibody (Biotin conjugated) [Clone ID: OTI3B7]**

#### **Product data:**

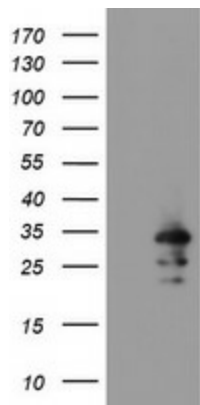
<b>Product Type:</b>	Primary Antibodies
<b>Clone Name:</b>	OTI3B7
<b>Applications:</b>	FC, IHC, WB
<b>Recommended Dilution:</b>	WB 1:2000, IHC 1:150, FLOW 1:100
<b>Reactivity:</b>	Human, Mouse, Rat
<b>Host:</b>	Mouse
<b>Isotype:</b>	IgG1
<b>Clonality:</b>	Monoclonal
<b>Immunogen:</b>	Full length human recombinant protein of human RBPMS (NP_001008712) produced in E.coli.
<b>Formulation:</b>	PBS (pH 7.3) containing 1% BSA, 50% glycerol and 0.02% sodium azide.
<b>Concentration:</b>	0.5 mg/ml
<b>Purification:</b>	Purified from mouse ascites fluids or tissue culture supernatant by affinity chromatography (protein A/G)
<b>Conjugation:</b>	Biotin
<b>Storage:</b>	Store at -20°C as received.
<b>Stability:</b>	Stable for 12 months from date of receipt.
<b>Predicted Protein Size:</b>	24.1 kDa
<b>Gene Name:</b>	RNA binding protein with multiple splicing
<b>Database Link:</b>	<a href="#">NP_001008712</a> <a href="#">Entrez Gene 11030 Human</a> <a href="#">Q93062</a>
<b>Background:</b>	This gene encodes a member of the RRM family of RNA-binding proteins. The RRM domain is between 80-100 amino acids in length and family members contain one to four copies of the domain. The RRM domain consists of two short stretches of conserved sequence called RNP1 and RNP2, as well as a few highly conserved hydrophobic residues. The protein encoded by this gene has a single, putative RRM domain in its N-terminus. Alternative splicing results in multiple transcript variants encoding different isoforms. [provided by RefSeq, Jul 2008]



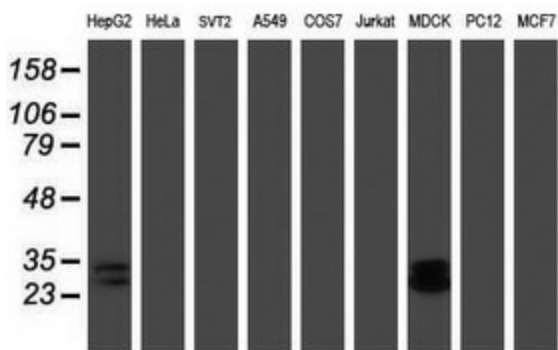
[View online »](#)

Synonyms: HERMES  
 Protein Families: Stem cell - Pluripotency

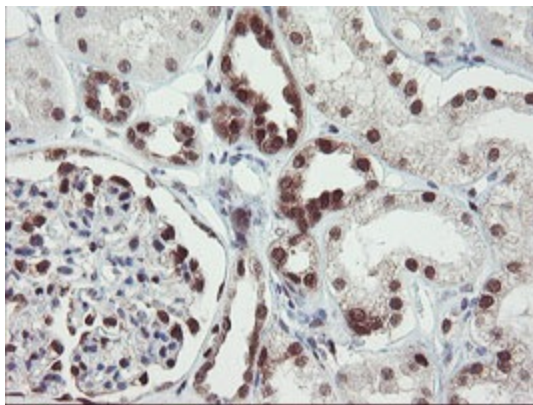
**Product images:**



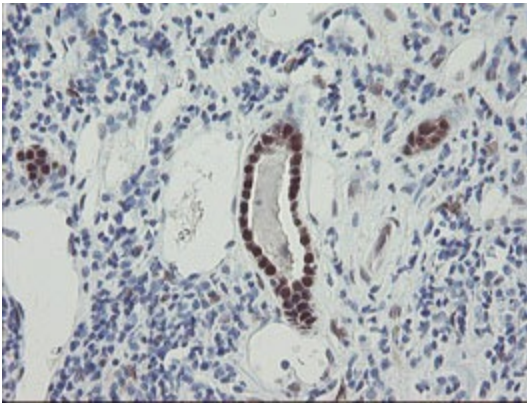
HEK293T cells were transfected with the pCMV6-ENTRY control (Cat# [PS100001], Left lane) or pCMV6-ENTRY RBPMs (Cat# [RC200248], Right lane) cDNA for 48 hrs and lysed. Equivalent amounts of cell lysates (5 ug per lane) were separated by SDS-PAGE and immunoblotted with anti-RBPMs (Cat# [TA800206]). Positive lysates [LY423359] (100ug) and [LC423359] (20ug) can be purchased separately from OriGene.



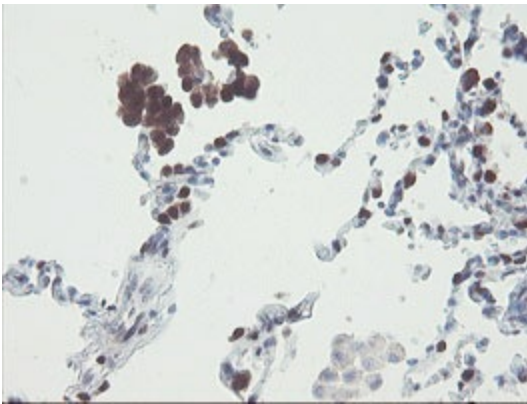
Western blot analysis of extracts (35ug) from 9 different cell lines by using anti-RBPMs monoclonal antibody (HepG2: human; HeLa: human; SVT2: mouse; A549: human; COS7: monkey; Jurkat: human; MDCK: canine; PC12: rat; MCF7: human).



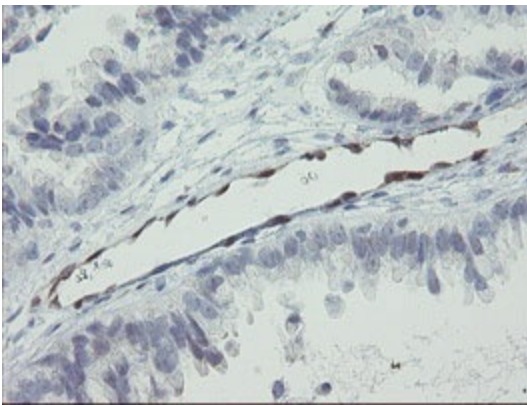
Immunohistochemical staining of paraffin-embedded Human Kidney tissue within the normal limits using anti-RBPMs mouse monoclonal antibody. (Heat-induced epitope retrieval by 10mM citric buffer, pH6.0, 100°C for 10min, [TA800206])



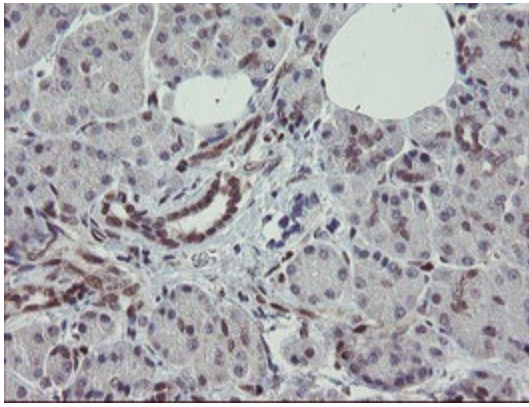
Immunohistochemical staining of paraffin-embedded Carcinoma of Human kidney tissue using anti-RBPMS mouse monoclonal antibody. (Heat-induced epitope retrieval by 10mM citric buffer, pH6.0, 100°C for 10min, [TA800206])



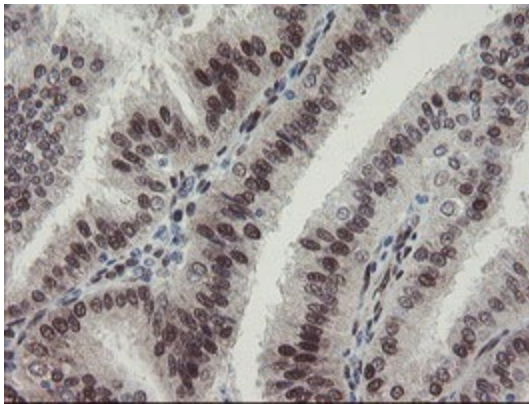
Immunohistochemical staining of paraffin-embedded Human lung tissue within the normal limits using anti-RBPMS mouse monoclonal antibody. (Heat-induced epitope retrieval by 10mM citric buffer, pH6.0, 100°C for 10min, [TA800206])



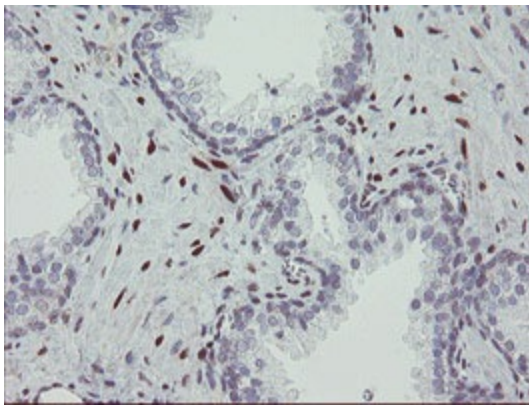
Immunohistochemical staining of paraffin-embedded Adenocarcinoma of Human ovary tissue using anti-RBPMS mouse monoclonal antibody. (Heat-induced epitope retrieval by 10mM citric buffer, pH6.0, 100°C for 10min, [TA800206])



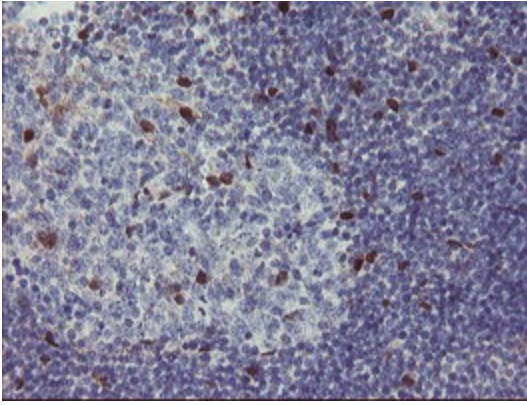
Immunohistochemical staining of paraffin-embedded Human pancreas tissue within the normal limits using anti-RBPM5 mouse monoclonal antibody. (Heat-induced epitope retrieval by 10mM citric buffer, pH6.0, 100°C for 10min, [TA800206])



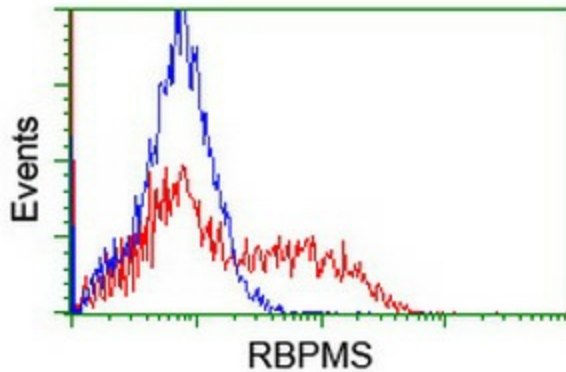
Immunohistochemical staining of paraffin-embedded Adenocarcinoma of Human endometrium tissue using anti-RBPM5 mouse monoclonal antibody. (Heat-induced epitope retrieval by 10mM citric buffer, pH6.0, 100°C for 10min, [TA800206])



Immunohistochemical staining of paraffin-embedded Human prostate tissue within the normal limits using anti-RBPM5 mouse monoclonal antibody. (Heat-induced epitope retrieval by 10mM citric buffer, pH6.0, 100°C for 10min, [TA800206])



Immunohistochemical staining of paraffin-embedded Human tonsil within the normal limits using anti-RBPMS mouse monoclonal antibody. (Heat-induced epitope retrieval by 10mM citric buffer, pH6.0, 100°C for 10min, [TA800206])



HEK293T cells transfected with either [RC200248] overexpress plasmid (Red) or empty vector control plasmid (Blue) were immunostained by anti-RBPMS antibody ([TA800206]), and then analyzed by flow cytometry.