

Product datasheet for **TA800202BM**

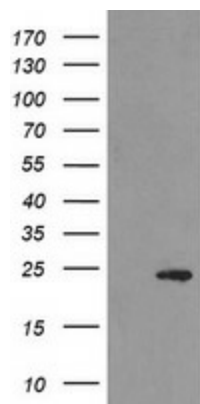
MYL7 Mouse Monoclonal Antibody (HRP conjugated) [Clone ID: OTI4C4]

Product data:

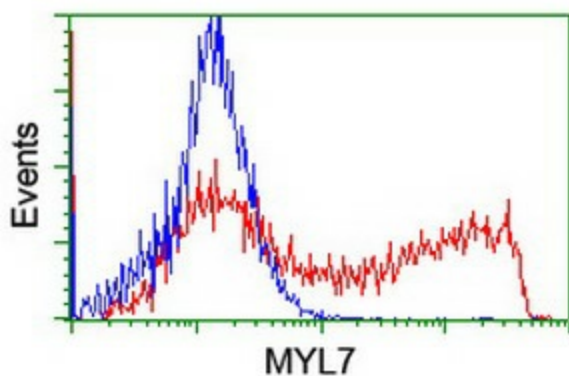
Product Type:	Primary Antibodies
Clone Name:	OTI4C4
Applications:	FC, WB
Recommended Dilution:	WB 1:2000, FLOW 1:100
Reactivity:	Human, Mouse, Rat
Host:	Mouse
Isotype:	IgG1
Clonality:	Monoclonal
Immunogen:	Full length human recombinant protein of human MYL7 (NP_067046) produced in E.coli.
Formulation:	PBS (pH 7.3) containing 1% BSA, 50% glycerol.
Concentration:	0.5 mg/ml
Purification:	Purified from mouse ascites fluids or tissue culture supernatant by affinity chromatography (protein A/G)
Conjugation:	HRP
Storage:	Store at -20°C as received.
Stability:	Stable for 12 months from date of receipt.
Predicted Protein Size:	19.3 kDa
Gene Name:	myosin light chain 7
Database Link:	NP_067046 Entrez Gene 17898 Mouse Entrez Gene 289759 Rat Entrez Gene 58498 Human Q01449
Synonyms:	MYL2A; MYLC2A
Protein Families:	Druggable Genome
Protein Pathways:	Focal adhesion, Leukocyte transendothelial migration, Regulation of actin cytoskeleton, Tight junction



[View online »](#)

Product images:

HEK293T cells were transfected with the pCMV6-ENTRY control (Left lane) or pCMV6-ENTRY MYL7 ([RC206449], Right lane) cDNA for 48 hrs and lysed. Equivalent amounts of cell lysates (5 ug per lane) were separated by SDS-PAGE and immunoblotted with anti-MYL7. Positive lysates [LY412006] (100ug) and [LC412006] (20ug) can be purchased separately from OriGene.



HEK293T cells transfected with either [RC206449] overexpress plasmid (Red) or empty vector control plasmid (Blue) were immunostained by anti-MYL7 antibody ([TA800202]), and then analyzed by flow cytometry.