

Product datasheet for **TA800189M**

MRPS27 Mouse Monoclonal Antibody [Clone ID: OTI2B10]

Product data:

Product Type:	Primary Antibodies
Clone Name:	OTI2B10
Applications:	FC, WB
Recommended Dilution:	WB 1:2000, FLOW 1:100
Reactivity:	Human
Host:	Mouse
Isotype:	IgG1
Clonality:	Monoclonal
Immunogen:	Human recombinant protein fragment corresponding to amino acids 151-414 of human MRPS27 (NP_055899) produced in E.coli.
Formulation:	PBS (pH 7.3) containing 1% BSA, 50% glycerol and 0.02% sodium azide.
Concentration:	1 mg/ml
Purification:	Purified from mouse ascites fluids or tissue culture supernatant by affinity chromatography (protein A/G)
Conjugation:	Unconjugated
Storage:	Store at -20°C as received.
Stability:	Stable for 12 months from date of receipt.
Predicted Protein Size:	47.4 kDa
Gene Name:	mitochondrial ribosomal protein S27
Database Link:	NP_055899 Entrez Gene 23107 Human Q92552



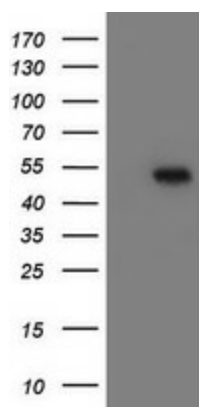
[View online »](#)

Background:

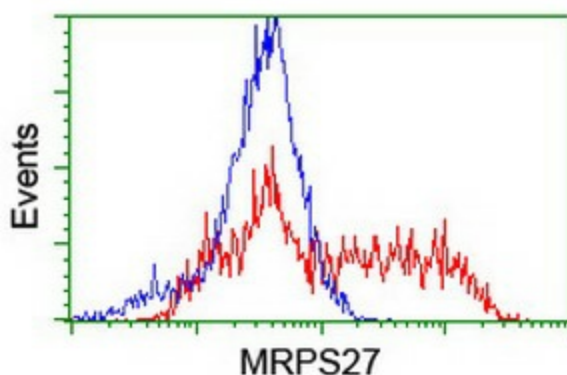
Mammalian mitochondrial ribosomal proteins are encoded by nuclear genes and help in protein synthesis within the mitochondrion. Mitochondrial ribosomes (mitoribosomes) consist of a small 28S subunit and a large 39S subunit. They have an estimated 75% protein to rRNA composition compared to prokaryotic ribosomes, where this ratio is reversed. Another difference between mammalian mitoribosomes and prokaryotic ribosomes is that the latter contain a 5S rRNA. Among different species, the proteins comprising the mitoribosome differ greatly in sequence, and sometimes in biochemical properties, which prevents easy recognition by sequence homology. This gene encodes a 28S subunit protein that may be a functional partner of the death associated protein 3 (DAP3). [provided by RefSeq]. COMPLETENESS: complete on the 3' end.

Synonyms:

MRP-S27; S27mt

Product images:


HEK293T cells were transfected with the pCMV6-ENTRY control (Left lane) or pCMV6-ENTRY MRPS27 ([RC209478], Right lane) cDNA for 48 hrs and lysed. Equivalent amounts of cell lysates (5 ug per lane) were separated by SDS-PAGE and immunoblotted with anti-MRPS27. Positive lysates [LY402416] (100ug) and [LC402416] (20ug) can be purchased separately from OriGene.



HEK293T cells transfected with either [RC209478] overexpress plasmid (Red) or empty vector control plasmid (Blue) were immunostained by anti-MRPS27 antibody ([TA800189]), and then analyzed by flow cytometry.