

Product datasheet for **TA800188BM**

NYREN18 (NUB1) Mouse Monoclonal Antibody (HRP conjugated) [Clone ID: OTI4H2]

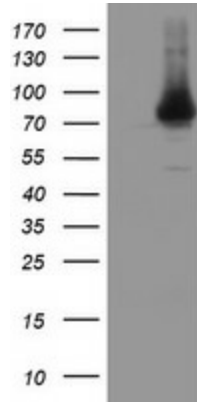
Product data:

Product Type:	Primary Antibodies
Clone Name:	OTI4H2
Applications:	FC, IF, IHC, WB
Recommended Dilution:	WB 1:500~2000, IHC 1:150, IF 1:100, FLOW 1:100
Reactivity:	Human, Dog, Rat, Monkey, Mouse
Host:	Mouse
Isotype:	IgG2a
Clonality:	Monoclonal
Immunogen:	Human recombinant protein fragment corresponding to amino acids 1-326 of human NUB1 (NP_057202) produced in E.coli.
Formulation:	PBS (pH 7.3) containing 1% BSA, 50% glycerol.
Concentration:	0.5 mg/ml
Purification:	Purified from mouse ascites fluids or tissue culture supernatant by affinity chromatography (protein A/G)
Conjugation:	HRP
Storage:	Store at -20°C as received.
Stability:	Stable for 12 months from date of receipt.
Predicted Protein Size:	68.9 kDa
Gene Name:	negative regulator of ubiquitin-like proteins 1
Database Link:	NP_057202 Entrez Gene 53312 Mouse Entrez Gene 296731 Rat Entrez Gene 475542 Dog Entrez Gene 715231 Monkey Entrez Gene 51667 Human Q9Y5A7
Background:	NUB1 interacts with and negatively regulates NEDD8 (MIM 603171), a ubiquitin-like protein that covalently conjugates to cullin (see MIM 603134) family members. [supplied by OMIM]
Synonyms:	BS4; NUB1L; NYREN18
Protein Families:	Druggable Genome

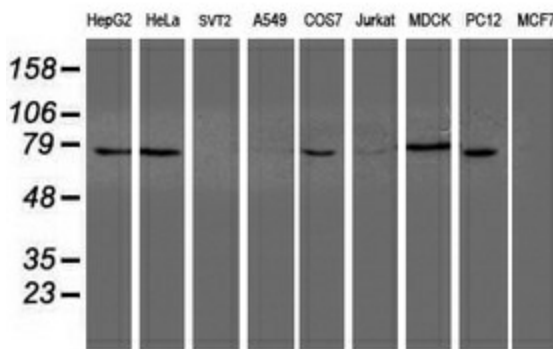


[View online »](#)

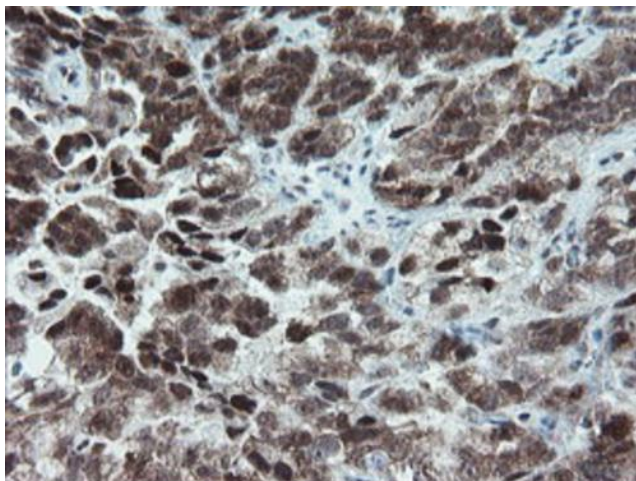
Product images:



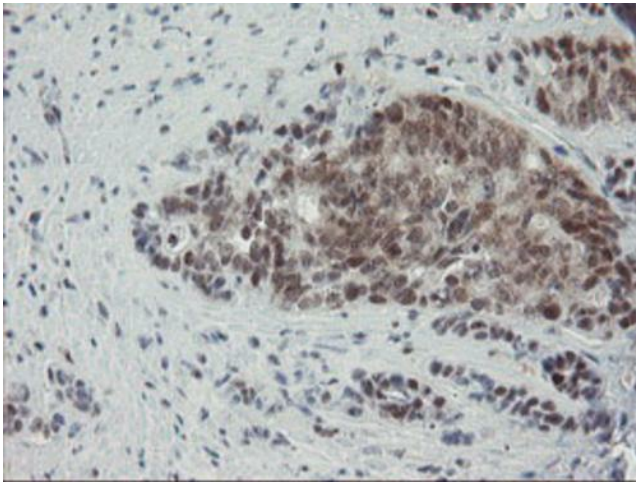
HEK293T cells were transfected with the pCMV6-ENTRY control (Cat# [PS100001], Left lane) or pCMV6-ENTRY NUB1 (Cat# [RC208098], Right lane) cDNA for 48 hrs and lysed. Equivalent amounts of cell lysates (5 ug per lane) were separated by SDS-PAGE and immunoblotted with anti-NUB1(Cat# [TA800188]). Positive lysates [LY414176] (100ug) and [LC414176] (20ug) can be purchased separately from OriGene.



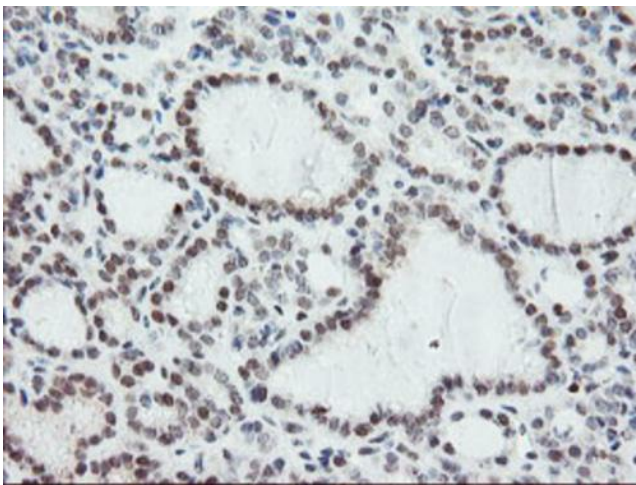
Western blot analysis of extracts (35ug) from 9 different cell lines by using anti-NUB1 monoclonal antibody (HepG2: human; HeLa: human; SVT2: mouse; A549: human; COS7: monkey; Jurkat: human; MDCK: canine; PC12: rat; MCF7: human).



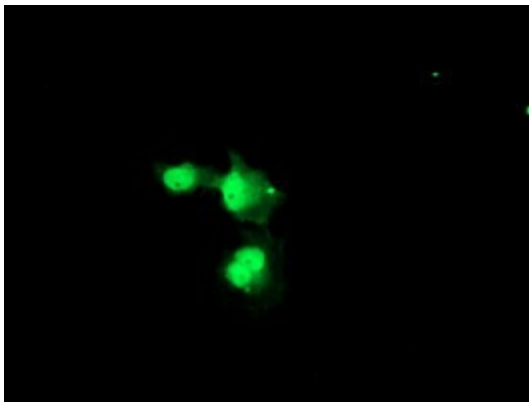
Immunohistochemical staining of paraffin-embedded Adenocarcinoma of Human ovary tissue using anti-NUB1 mouse monoclonal antibody. (Heat-induced epitope retrieval by 10mM citric buffer, pH6.0, 100°C for 10min, [TA800188])



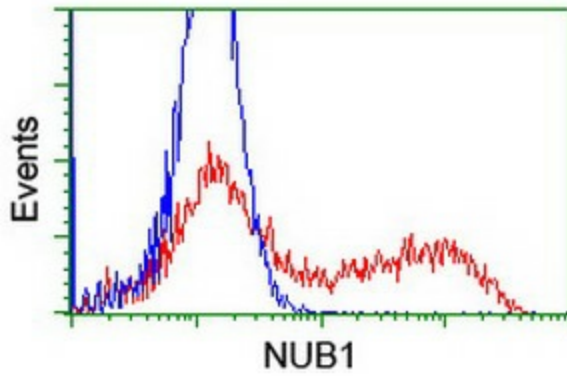
Immunohistochemical staining of paraffin-embedded Carcinoma of Human pancreas tissue using anti-NUB1 mouse monoclonal antibody. (Heat-induced epitope retrieval by 10mM citric buffer, pH6.0, 100°C for 10min, [TA800188])



Immunohistochemical staining of paraffin-embedded Carcinoma of Human thyroid tissue using anti-NUB1 mouse monoclonal antibody. (Heat-induced epitope retrieval by 10mM citric buffer, pH6.0, 100°C for 10min, [TA800188])



Anti-NUB1 mouse monoclonal antibody ([TA800188]) immunofluorescent staining of COS7 cells transiently transfected by pCMV6-ENTRY NUB1 ([RC208098]).



HEK293T cells transfected with either [RC208098] overexpress plasmid (Red) or empty vector control plasmid (Blue) were immunostained by anti-NUB1 antibody ([TA800188]), and then analyzed by flow cytometry.