

## Product datasheet for **TA800183M**

### **NYREN18 (NUB1) Mouse Monoclonal Antibody [Clone ID: OTI2G1]**

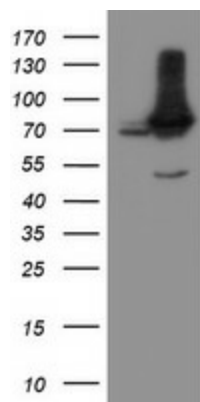
#### **Product data:**

Product Type:	Primary Antibodies
Clone Name:	OTI2G1
Applications:	FC, IHC, WB
Recommended Dilution:	WB 1:500~2000, IHC 1:150, FLOW 1:100
Reactivity:	Human, Mouse, Rat
Host:	Mouse
Isotype:	IgG1
Clonality:	Monoclonal
Immunogen:	Human recombinant protein fragment corresponding to amino acids 1-326 of human NUB1 (NP_057202) produced in E.coli.
Formulation:	PBS (pH 7.3) containing 1% BSA, 50% glycerol and 0.02% sodium azide.
Concentration:	1 mg/ml
Purification:	Purified from mouse ascites fluids or tissue culture supernatant by affinity chromatography (protein A/G)
Conjugation:	Unconjugated
Storage:	Store at -20°C as received.
Stability:	Stable for 12 months from date of receipt.
Predicted Protein Size:	68.9 kDa
Gene Name:	negative regulator of ubiquitin-like proteins 1
Database Link:	<a href="#">NP_057202</a> <a href="#">Entrez Gene 53312 Mouse</a> <a href="#">Entrez Gene 296731 Rat</a> <a href="#">Entrez Gene 51667 Human</a> <a href="#">Q9Y5A7</a>
Background:	NUB1 interacts with and negatively regulates NEDD8 (MIM 603171), a ubiquitin-like protein that covalently conjugates to cullin (see MIM 603134) family members. [supplied by OMIM]
Synonyms:	BS4; NUB1L; NYREN18
Protein Families:	Druggable Genome

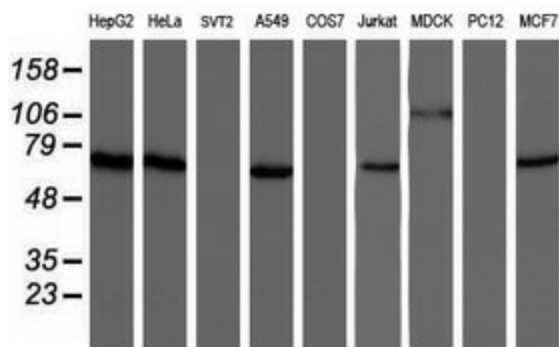


[View online »](#)

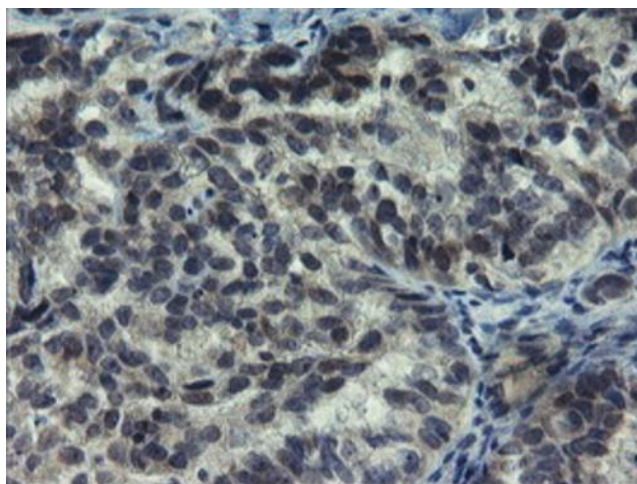
## Product images:



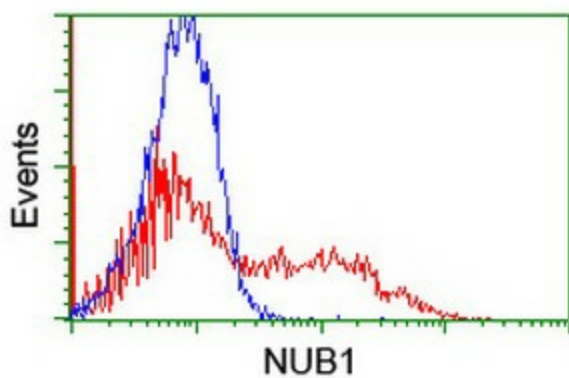
HEK293T cells were transfected with the pCMV6-ENTRY control (Left lane) or pCMV6-ENTRY NUB1 ([RC208098], Right lane) cDNA for 48 hrs and lysed. Equivalent amounts of cell lysates (5 ug per lane) were separated by SDS-PAGE and immunoblotted with anti-NUB1. Positive lysates [LY414176] (100ug) and [LC414176] (20ug) can be purchased separately from OriGene.



Western blot analysis of extracts (35ug) from 9 different cell lines by using anti-NUB1 monoclonal antibody (HepG2: human; HeLa: human; SVT2: mouse; A549: human; COS7: monkey; Jurkat: human; MDCK: canine; PC12: rat; MCF7: human).



Immunohistochemical staining of paraffin-embedded Adenocarcinoma of Human ovary tissue using anti-NUB1 mouse monoclonal antibody. Heat-induced epitope retrieval by EDTA solution buffer pH 8.0 at 120°C for 3 min.



HEK293T cells transfected with either [RC208098] overexpress plasmid (Red) or empty vector control plasmid (Blue) were immunostained by anti-NUB1 antibody ([TA800183]), and then analyzed by flow cytometry.