

## Product datasheet for **TA800183**

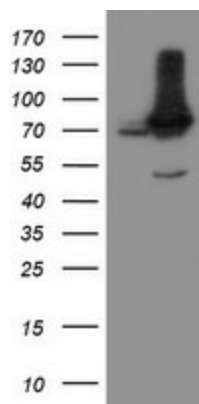
### **NYREN18 (NUB1) Mouse Monoclonal Antibody [Clone ID: OTI2G1]**

#### **Product data:**

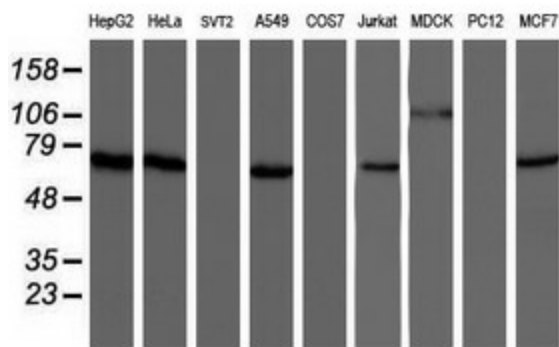
<b>Product Type:</b>	Primary Antibodies
<b>Clone Name:</b>	OTI2G1
<b>Applications:</b>	FC, IHC, WB
<b>Recommended Dilution:</b>	WB 1:500~2000, IHC 1:150, FLOW 1:100
<b>Reactivity:</b>	Human, Mouse, Rat
<b>Host:</b>	Mouse
<b>Isotype:</b>	IgG1
<b>Clonality:</b>	Monoclonal
<b>Immunogen:</b>	Human recombinant protein fragment corresponding to amino acids 1-326 of human NUB1 (NP_057202) produced in E.coli.
<b>Formulation:</b>	PBS (pH 7.3) containing 1% BSA, 50% glycerol and 0.02% sodium azide.
<b>Concentration:</b>	1 mg/ml
<b>Purification:</b>	Purified from mouse ascites fluids or tissue culture supernatant by affinity chromatography (protein A/G)
<b>Conjugation:</b>	Unconjugated
<b>Storage:</b>	Store at -20°C as received.
<b>Stability:</b>	Stable for 12 months from date of receipt.
<b>Predicted Protein Size:</b>	68.9 kDa
<b>Gene Name:</b>	negative regulator of ubiquitin-like proteins 1
<b>Database Link:</b>	<a href="#">NP_057202</a> <a href="#">Entrez Gene 53312 Mouse</a> <a href="#">Entrez Gene 296731 Rat</a> <a href="#">Entrez Gene 51667 Human</a> <a href="#">Q9Y5A7</a>
<b>Background:</b>	NUB1 interacts with and negatively regulates NEDD8 (MIM 603171), a ubiquitin-like protein that covalently conjugates to cullin (see MIM 603134) family members. [supplied by OMIM]
<b>Synonyms:</b>	BS4; NUB1L; NYREN18
<b>Protein Families:</b>	Druggable Genome



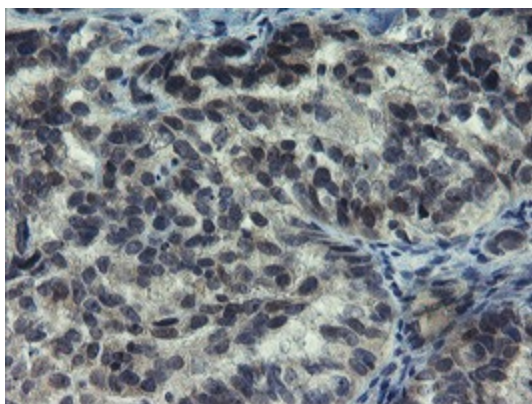
[View online »](#)

**Product images:**


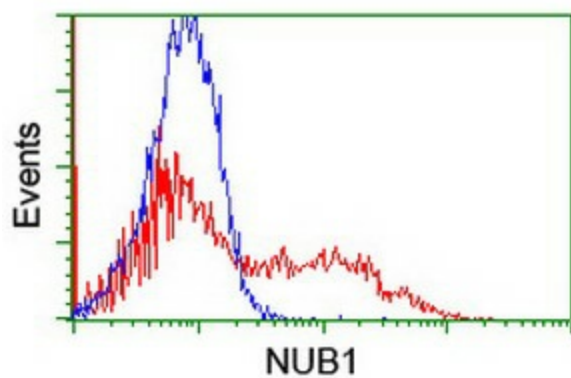
HEK293T cells were transfected with the pCMV6-ENTRY control (Left lane) or pCMV6-ENTRY NUB1 ([RC208098], Right lane) cDNA for 48 hrs and lysed. Equivalent amounts of cell lysates (5 ug per lane) were separated by SDS-PAGE and immunoblotted with anti-NUB1. Positive lysates [LY414176] (100ug) and [LC414176] (20ug) can be purchased separately from OriGene.



Western blot analysis of extracts (35ug) from 9 different cell lines by using anti-NUB1 monoclonal antibody (HepG2: human; HeLa: human; SVT2: mouse; A549: human; COS7: monkey; Jurkat: human; MDCK: canine; PC12: rat; MCF7: human).



Immunohistochemical staining of paraffin-embedded Adenocarcinoma of Human ovary tissue using anti-NUB1 mouse monoclonal antibody. (Heat-induced epitope retrieval by 10mM citric buffer, pH6.0, 100°C for 10min, TA800183)



HEK293T cells transfected with either [RC208098] overexpress plasmid (Red) or empty vector control plasmid (Blue) were immunostained by anti-NUB1 antibody (TA800183), and then analyzed by flow cytometry.