

## Product datasheet for **TA800180AM**

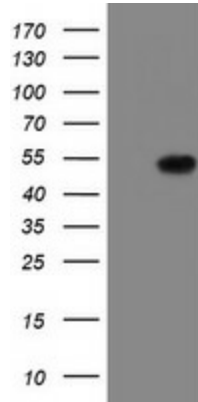
### LANCL2 Mouse Monoclonal Antibody (Biotin conjugated) [Clone ID: OTI2A11]

#### Product data:

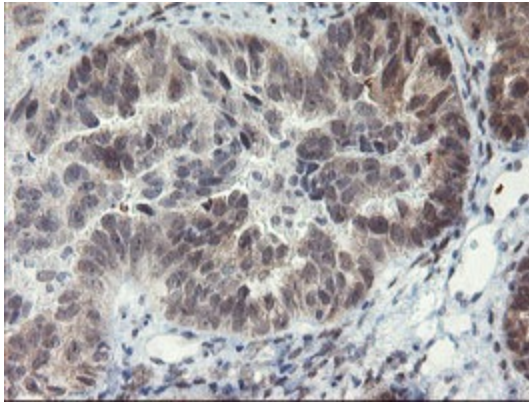
Product Type:	Primary Antibodies
Clone Name:	OTI2A11
Applications:	FC, IHC, WB
Recommended Dilution:	WB 1:1000, IHC 1:150, FLOW 1:100
Reactivity:	Human, Mouse, Rat
Host:	Mouse
Isotype:	IgG1
Clonality:	Monoclonal
Immunogen:	Human recombinant protein fragment corresponding to amino acids 212-450 of human LANCL2 (NP_061167) produced in E.coli.
Formulation:	PBS (pH 7.3) containing 1% BSA, 50% glycerol and 0.02% sodium azide.
Concentration:	0.5 mg/ml
Purification:	Purified from mouse ascites fluids or tissue culture supernatant by affinity chromatography (protein A/G)
Conjugation:	Biotin
Storage:	Store at -20°C as received.
Stability:	Stable for 12 months from date of receipt.
Predicted Protein Size:	50.7 kDa
Gene Name:	LanC like 2
Database Link:	<a href="#">NP_061167</a> <a href="#">Entrez Gene 71835 Mouse</a> <a href="#">Entrez Gene 362375 Rat</a> <a href="#">Entrez Gene 55915 Human</a> <a href="#">Q9NS86</a>
Synonyms:	GPR69B; TASP
Protein Families:	Druggable Genome



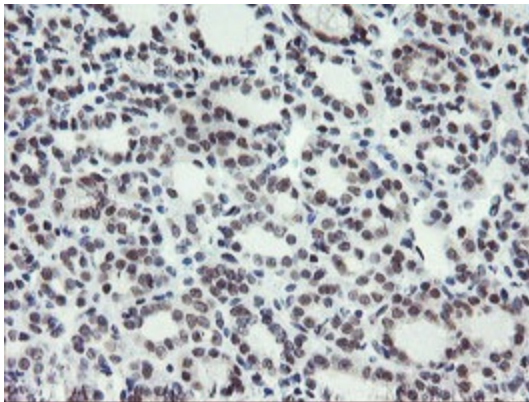
[View online »](#)

**Product images:**

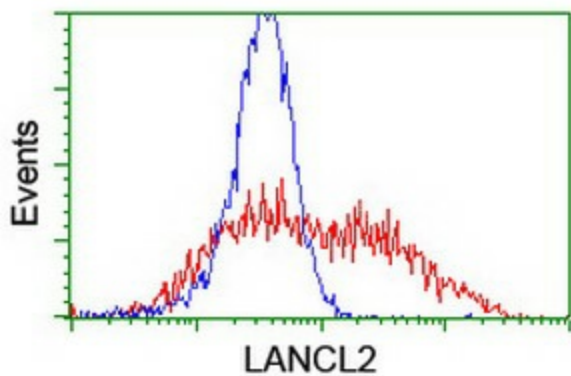
HEK293T cells were transfected with the pCMV6-ENTRY control (Cat# [PS100001], Left lane) or pCMV6-ENTRY LANCL2 (Cat# [RC209751], Right lane) cDNA for 48 hrs and lysed. Equivalent amounts of cell lysates (5 ug per lane) were separated by SDS-PAGE and immunoblotted with anti-LANCL2 (Cat# [TA800180]). Positive lysates [LY412892] (100ug) and [LC412892] (20ug) can be purchased separately from OriGene.



Immunohistochemical staining of paraffin-embedded Adenocarcinoma of Human ovary tissue using anti-LANCL2 mouse monoclonal antibody. (Heat-induced epitope retrieval by 10mM citric buffer, pH6.0, 100°C for 10min, [TA800180])



Immunohistochemical staining of paraffin-embedded Carcinoma of Human thyroid tissue using anti-LANCL2 mouse monoclonal antibody. (Heat-induced epitope retrieval by 10mM citric buffer, pH6.0, 100°C for 10min, [TA800180])



HEK293T cells transfected with either [RC209751] overexpress plasmid (Red) or empty vector control plasmid (Blue) were immunostained by anti-LANCL2 antibody ([TA800180]), and then analyzed by flow cytometry.