

## Product datasheet for **TA800173AM**

### **SUHW1 (ZNF280A) Mouse Monoclonal Antibody (Biotin conjugated) [Clone ID: OTI2H3]**

#### **Product data:**

|                                |  |
|--------------------------------|--|
| <b>Product Type:</b>           | Primary Antibodies   |
| <b>Clone Name:</b>             | OTI2H3   |
| <b>Applications:</b>           | FC, WB   |
| <b>Recommended Dilution:</b>   | WB 1:1000, FLOW 1:100  |
| <b>Reactivity:</b>             | Human  |
| <b>Host:</b>                   | Mouse  |
| <b>Isotype:</b>                | IgG1   |
| <b>Clonality:</b>              | Monoclonal   |
| <b>Immunogen:</b>              | Human recombinant protein fragment corresponding to amino acids 1-333 of human ZNF280A (NP_542778) produced in E.coli.   |
| <b>Formulation:</b>            | PBS (pH 7.3) containing 1% BSA, 50% glycerol and 0.02% sodium azide.   |
| <b>Concentration:</b>          | 0.5 mg/ml  |
| <b>Purification:</b>           | Purified from mouse ascites fluids or tissue culture supernatant by affinity chromatography (protein A/G)  |
| <b>Conjugation:</b>            | Biotin   |
| <b>Storage:</b>                | Store at -20°C as received.  |
| <b>Stability:</b>              | Stable for 12 months from date of receipt.   |
| <b>Predicted Protein Size:</b> | 60.6 kDa   |
| <b>Gene Name:</b>              | zinc finger protein 280A   |
| <b>Database Link:</b>          | <a href="#">NP_542778</a><br><a href="#">Entrez Gene 129025 Human</a><br><a href="#">P59817</a>  |
| <b>Background:</b>             | This gene was predicted both by automated computational analysis and by similarity to a Drosophila gene and to predicted genes in other species (sheep, chimp, dog, cow). The predicted protein of this gene is similar to Drosophila suppressor of hairy wing protein, a leucine zipper protein which represses the function of transcriptional enhancers of the gypsy retrotransposon. [provided by RefSeq]. COMPLETENESS: complete on the 3' end. |

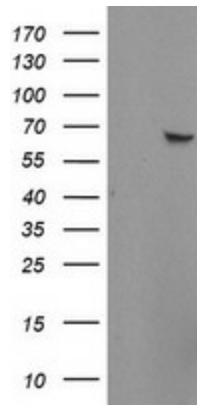


[View online »](#)

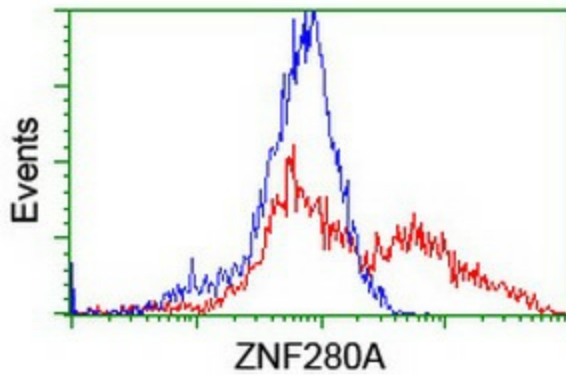
**Synonyms:** 3 OY11.1; 3'OY11.1; SUHW1; ZNF280; ZNF636

**Protein Families:** Druggable Genome, Transcription Factors

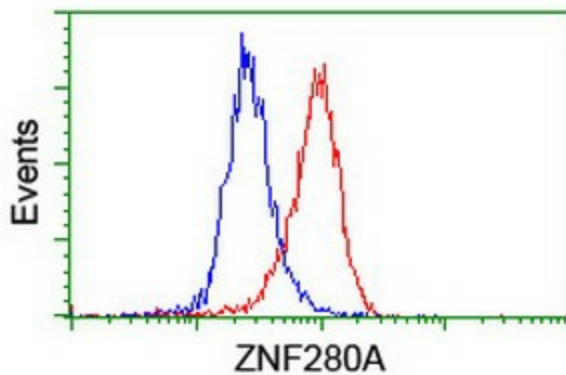
**Product images:**



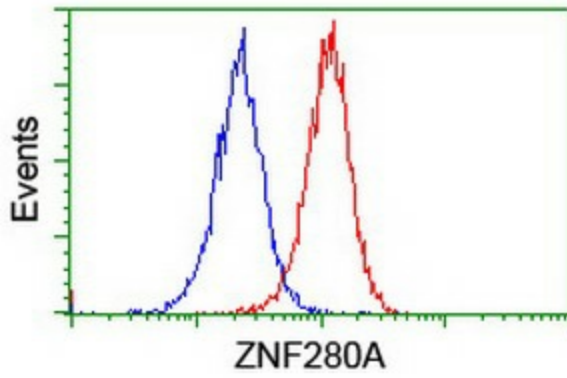
HEK293T cells were transfected with the pCMV6-ENTRY control (Cat# [PS100001], Left lane) or pCMV6-ENTRY ZNF280A (Cat# [RC208802], Right lane) cDNA for 48 hrs and lysed. Equivalent amounts of cell lysates (5 ug per lane) were separated by SDS-PAGE and immunoblotted with anti-ZNF280A (Cat# [TA800173]). Positive lysates [LY409057] (100ug) and [LC409057] (20ug) can be purchased separately from OriGene.



HEK293T cells transfected with either [RC208802] overexpress plasmid (Red) or empty vector control plasmid (Blue) were immunostained by anti-ZNF280A antibody ([TA800173]), and then analyzed by flow cytometry.



Flow cytometric Analysis of HeLa cells, using anti-ZNF280A antibody ([TA800173]), (Red), compared to a nonspecific negative control antibody (TA50011), (Blue).



Flow cytometric Analysis of Jurkat cells, using anti-ZNF280A antibody ([TA800173]), (Red), compared to a nonspecific negative control antibody (TA50011), (Blue).