

Product datasheet for **TA800173**

SUHW1 (ZNF280A) Mouse Monoclonal Antibody [Clone ID: OTI2H3]

Product data:

Product Type:	Primary Antibodies
Clone Name:	OTI2H3
Applications:	FC, WB
Recommended Dilution:	WB 1:1000, FLOW 1:100
Reactivity:	Human
Host:	Mouse
Isotype:	IgG1
Clonality:	Monoclonal
Immunogen:	Human recombinant protein fragment corresponding to amino acids 1-333 of human ZNF280A (NP_542778) produced in E.coli.
Formulation:	PBS (pH 7.3) containing 1% BSA, 50% glycerol and 0.02% sodium azide.
Concentration:	1 mg/ml
Purification:	Purified from mouse ascites fluids or tissue culture supernatant by affinity chromatography (protein A/G)
Conjugation:	Unconjugated
Storage:	Store at -20°C as received.
Stability:	Stable for 12 months from date of receipt.
Predicted Protein Size:	60.6 kDa
Gene Name:	zinc finger protein 280A
Database Link:	NP_542778 Entrez Gene 129025 Human P59817
Background:	This gene was predicted both by automated computational analysis and by similarity to a Drosophila gene and to predicted genes in other species (sheep, chimp, dog, cow). The predicted protein of this gene is similar to Drosophila suppressor of hairy wing protein, a leucine zipper protein which represses the function of transcriptional enhancers of the gypsy retrotransposon. [provided by RefSeq]. COMPLETENESS: complete on the 3' end.

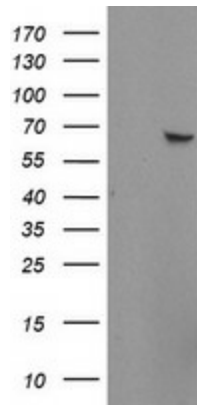


[View online »](#)

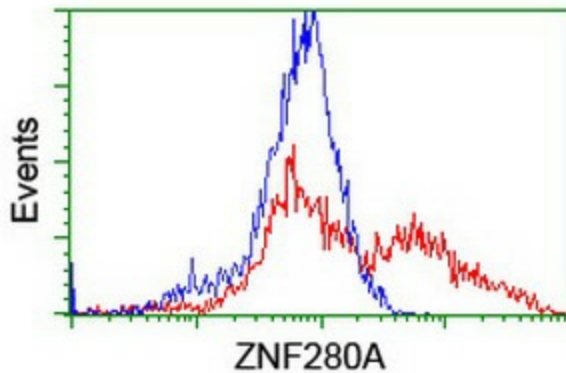
Synonyms: 3 OY11.1; 3'OY11.1; SUHW1; ZNF280; ZNF636

Protein Families: Druggable Genome, Transcription Factors

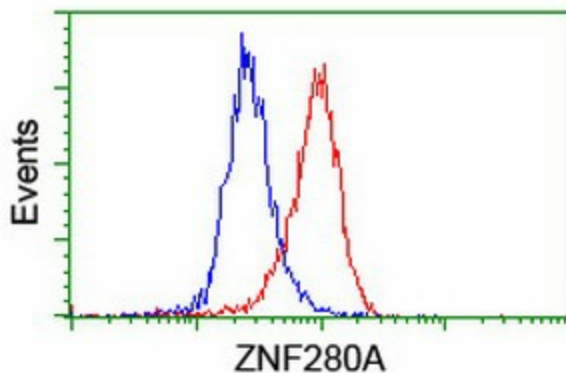
Product images:



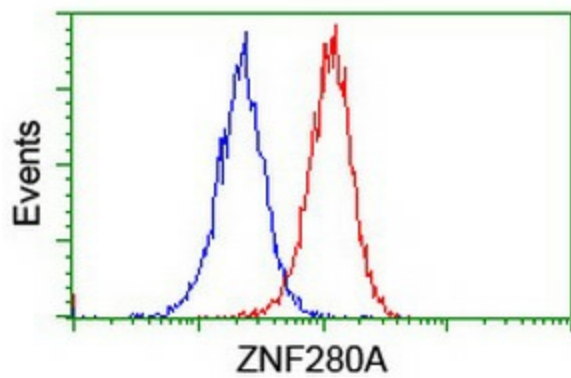
HEK293T cells were transfected with the pCMV6-ENTRY control (Cat# [PS100001], Left lane) or pCMV6-ENTRY ZNF280A (Cat# [RC208802], Right lane) cDNA for 48 hrs and lysed. Equivalent amounts of cell lysates (5 ug per lane) were separated by SDS-PAGE and immunoblotted with anti-ZNF280A(Cat# TA800173). Positive lysates [LY409057] (100ug) and [LC409057] (20ug) can be purchased separately from OriGene.



HEK293T cells transfected with either [RC208802] overexpress plasmid (Red) or empty vector control plasmid (Blue) were immunostained by anti-ZNF280A antibody (TA800173), and then analyzed by flow cytometry.



Flow cytometric Analysis of HeLa cells, using anti-ZNF280A antibody (TA800173), (Red), compared to a nonspecific negative control antibody (TA50011), (Blue).



Flow cytometric Analysis of Jurkat cells, using anti-ZNF280A antibody (TA800173), (Red), compared to a nonspecific negative control antibody (TA50011), (Blue).