

Product datasheet for **TA800167S**

SLUG (SNAI2) Mouse Monoclonal Antibody [Clone ID: OTI1A6]

Product data:

Product Type:	Primary Antibodies
Clone Name:	OTI1A6
Applications:	FC, IHC, WB
Recommended Dilution:	WB 1:1000, IHC 1:150, FLOW 1:100
Reactivity:	Human, Mouse, Rat
Host:	Mouse
Isotype:	IgG1
Clonality:	Monoclonal
Immunogen:	Full length human recombinant protein of human SNAI2 (NP_003059) produced in E.coli.
Formulation:	PBS (pH 7.3) containing 1% BSA, 50% glycerol and 0.02% sodium azide.
Concentration:	1 mg/ml
Purification:	Purified from mouse ascites fluids or tissue culture supernatant by affinity chromatography (protein A/G)
Conjugation:	Unconjugated
Storage:	Store at -20°C as received.
Stability:	Stable for 12 months from date of receipt.
Predicted Protein Size:	29.8 kDa
Gene Name:	snail family transcriptional repressor 2
Database Link:	NP_003059 Entrez Gene 20583 Mouse Entrez Gene 25554 Rat Entrez Gene 6591 Human O43623
Background:	This gene encodes a member of the Snail family of C2H2-type zinc finger transcription factors. The encoded protein acts as a transcriptional repressor that binds to E-box motifs and is also likely to repress E-cadherin transcription in breast carcinoma. This protein is involved in epithelial-mesenchymal transitions and has antiapoptotic activity. Mutations in this gene may be associated with sporadic cases of neural tube defects. [provided by RefSeq]
Synonyms:	SLUG; SLUGH1; SNAIL2; WS2D

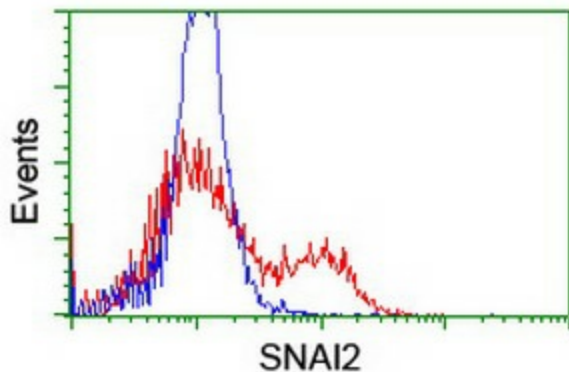


[View online »](#)

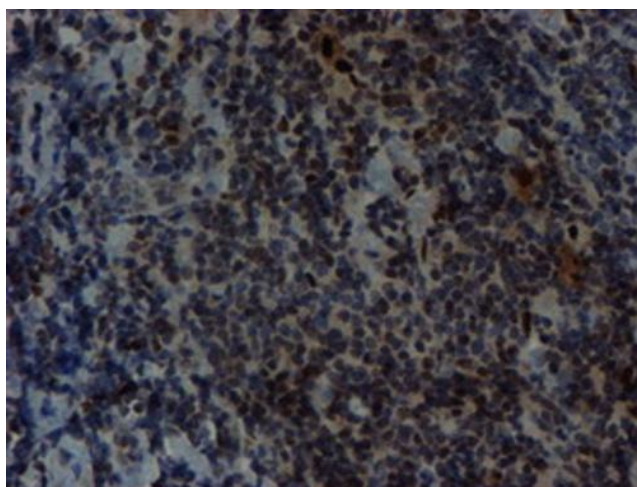
Protein Families: Druggable Genome, Transcription Factors

Protein Pathways: Adherens junction

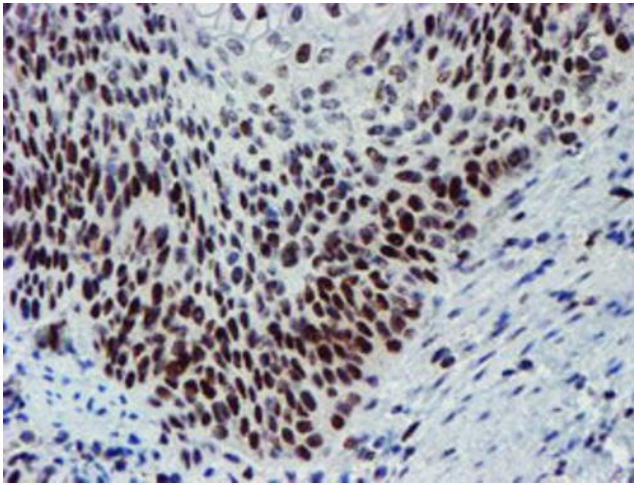
Product images:



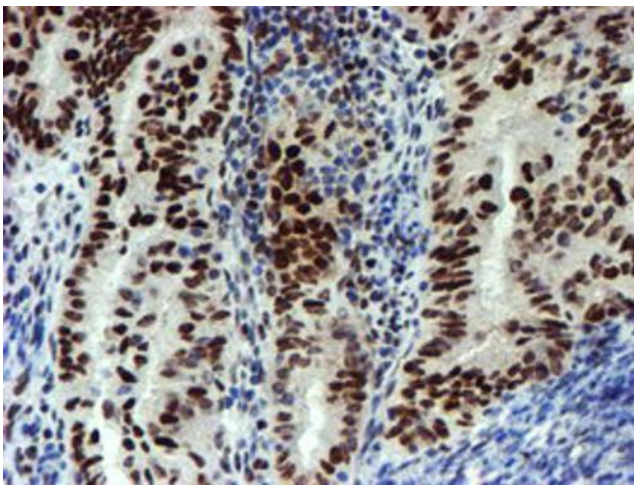
HEK293T cells transfected with either [RC202365] overexpress plasmid (Red) or empty vector control plasmid (Blue) were immunostained by anti-SNAI2 antibody ([TA800167]), and then analyzed by flow cytometry.



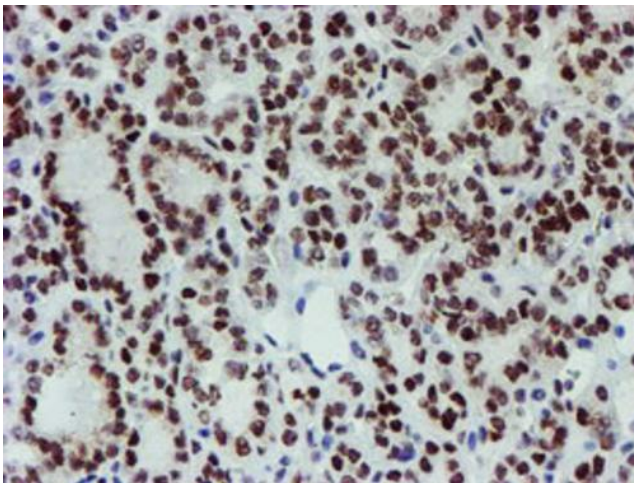
Immunohistochemical staining of paraffin-embedded Human lymphoma tissue using anti-SNAI2 mouse monoclonal antibody. (Heat-induced epitope retrieval by 10mM citric buffer, pH6.0, 100°C for 10min, [TA800167])



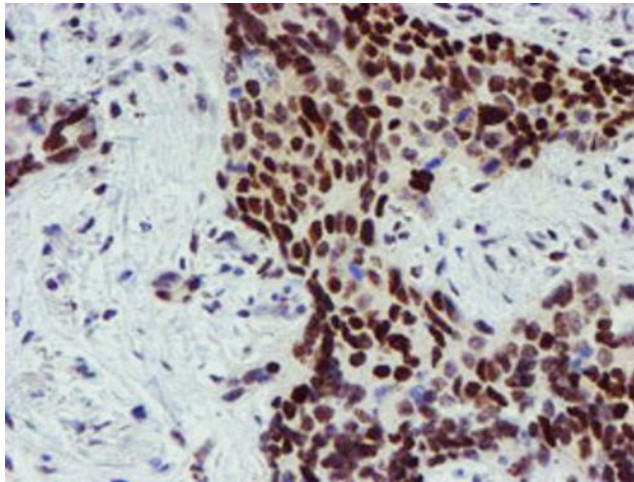
Immunohistochemical staining of paraffin-embedded Carcinoma of Human bladder tissue using anti-SNAI2 mouse monoclonal antibody. (Heat-induced epitope retrieval by 10mM citric buffer, pH6.0, 100°C for 10min, [TA800167])



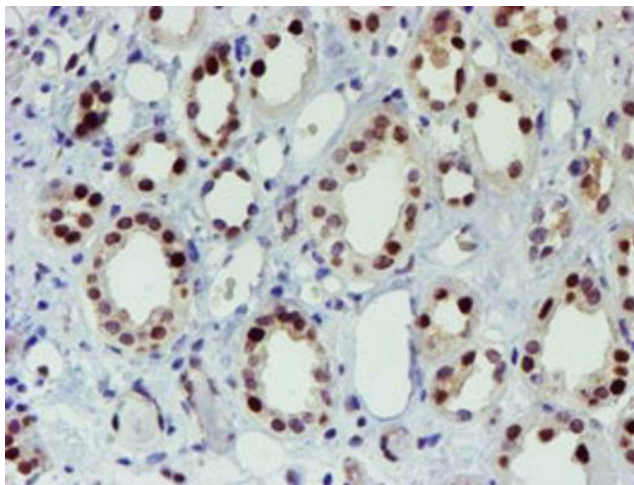
Immunohistochemical staining of paraffin-embedded Adenocarcinoma of Human endometrium tissue using anti-SNAI2 mouse monoclonal antibody. (Heat-induced epitope retrieval by 10mM citric buffer, pH6.0, 100°C for 10min, [TA800167])



Immunohistochemical staining of paraffin-embedded Carcinoma of Human thyroid tissue using anti-SNAI2 mouse monoclonal antibody. (Heat-induced epitope retrieval by 10mM citric buffer, pH6.0, 100°C for 10min, [TA800167])



Immunohistochemical staining of paraffin-embedded Carcinoma of Human lung tissue using anti-SNAI2 mouse monoclonal antibody. (Heat-induced epitope retrieval by 10mM citric buffer, pH6.0, 100°C for 10min, [TA800167])



Immunohistochemical staining of paraffin-embedded Human Kidney tissue within the normal limits using anti-SNAI2 mouse monoclonal antibody. (Heat-induced epitope retrieval by 10mM citric buffer, pH6.0, 100°C for 10min, [TA800167])

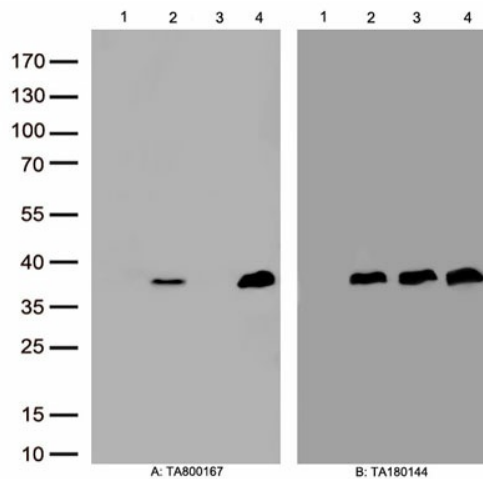


Figure A, Western blot analysis of overexpressed lysates(25ug per lane) from HEK293T cells transfected with empty plasmid ([PS100001], lane 1) , human SNAI2 plasmid ([RC202365], lane 2), mouse SNAI2 plasmid ([MR203571], lane 3),rat SNAI2 plasmid ([RR213332], lane 4), using anti-SNAI2 antibody [TA800167] (1:500). Figure B, Western blot analysis of the same samples as figure A with anti-DDK antibody ([TA180144], 1:1000)

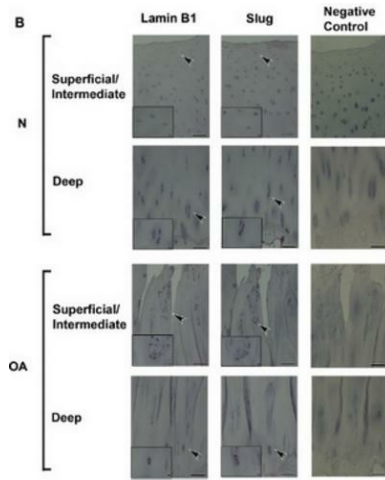


Figure from citation: Immunohistochemical analysis of Slug (also known as SNAI2) on serial sections of cartilage from normal and OA cartilage by using anti-SNAI2 antibody. Bar=100 um, Inset bar=10 um. Dilution: 1:300 [View Citation](#)