

Product datasheet for **TA800142BM**

FOX11 Mouse Monoclonal Antibody (HRP conjugated) [Clone ID: OTI5D3]

Product data:

Product Type:	Primary Antibodies
Clone Name:	OTI5D3
Applications:	FC, IF, IHC, WB
Recommended Dilution:	WB 1:500~2000, IHC 1:150, IF 1:100, FLOW 1:100
Reactivity:	Human, Mouse
Host:	Mouse
Isotype:	IgG2a
Clonality:	Monoclonal
Immunogen:	Human recombinant protein fragment corresponding to amino acids 111-350 of human FOX11 (NP_036320) produced in E.coli.
Formulation:	PBS (pH 7.3) containing 1% BSA, 50% glycerol.
Concentration:	0.5 mg/ml
Purification:	Purified from mouse ascites fluids or tissue culture supernatant by affinity chromatography (protein A/G)
Conjugation:	HRP
Storage:	Store at -20°C as received.
Stability:	Stable for 12 months from date of receipt.
Predicted Protein Size:	40.8 kDa
Gene Name:	forkhead box I1
Database Link:	NP_036320 Entrez Gene 14233 Mouse Entrez Gene 2299 Human Q12951
Background:	This gene belongs to the forkhead family of transcription factors which is characterized by a distinct forkhead domain. The specific function of this gene has not yet been determined; however, it is possible that this gene plays an important role in the development of the cochlea and vestibulum, as well as embryogenesis. Mutations in this gene may be associated with the common cavity phenotype. Two transcript variants encoding different isoforms have been found for this gene. [provided by RefSeq]

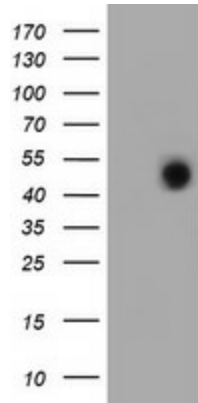


[View online »](#)

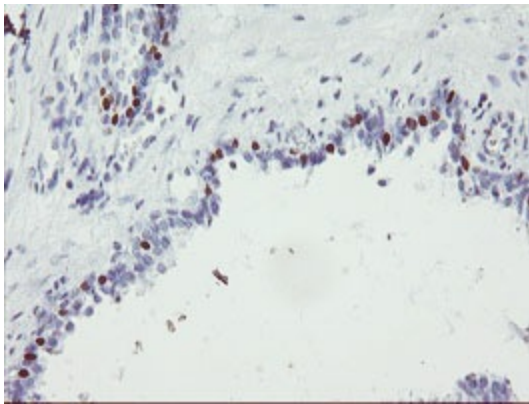
Synonyms: FKH10; FKHL10; FREAC-6; FREAC6; HFH-3; HFH3

Protein Families: Transcription Factors

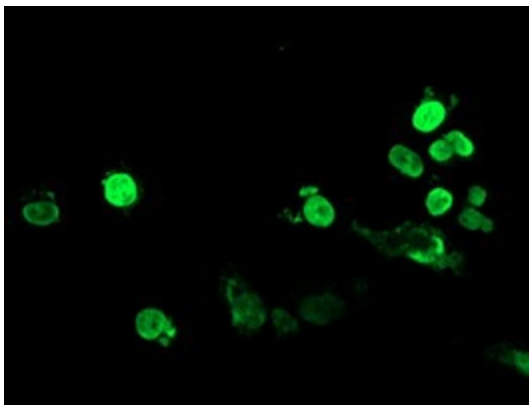
Product images:



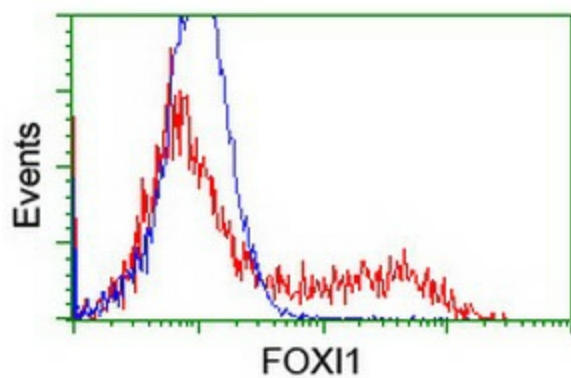
HEK293T cells were transfected with the pCMV6-ENTRY control (Left lane) or pCMV6-ENTRY FOX11 ([RC218102], Right lane) cDNA for 48 hrs and lysed. Equivalent amounts of cell lysates (5 ug per lane) were separated by SDS-PAGE and immunoblotted with anti-FOX11. Positive lysates [LY402162] (100ug) and [LC402162] (20ug) can be purchased separately from OriGene.



Immunohistochemical staining of paraffin-embedded Human prostate tissue within the normal limits using anti-FOX11 mouse monoclonal antibody. (Heat-induced epitope retrieval by 10mM citric buffer, pH6.0, 100°C for 10min, [TA800142])



Anti-FOX11 mouse monoclonal antibody ([TA800142]) immunofluorescent staining of COS7 cells transiently transfected by pCMV6-ENTRY FOX11 ([RC218102]).



HEK293T cells transfected with either [RC218102] overexpress plasmid (Red) or empty vector control plasmid (Blue) were immunostained by anti-FOX11 antibody ([TA800142]), and then analyzed by flow cytometry.