

Product datasheet for **TA800135S**

TIGD1 Mouse Monoclonal Antibody [Clone ID: OTI3H4]

Product data:

Product Type:	Primary Antibodies
Clone Name:	OTI3H4
Applications:	WB
Recommended Dilution:	WB 1:2000
Reactivity:	Human
Host:	Mouse
Isotype:	IgG1
Clonality:	Monoclonal
Immunogen:	Human recombinant protein fragment corresponding to amino acids 1-267 of human TIGD1(NP_663748) produced in E.coli.
Formulation:	PBS (pH 7.3) containing 1% BSA, 50% glycerol and 0.02% sodium azide.
Concentration:	1 mg/ml
Purification:	Purified from mouse ascites fluids or tissue culture supernatant by affinity chromatography (protein A/G)
Conjugation:	Unconjugated
Storage:	Store at -20°C as received.
Stability:	Stable for 12 months from date of receipt.
Predicted Protein Size:	67.1 kDa
Gene Name:	tigger transposable element derived 1
Database Link:	NP_663748 Entrez Gene 200765 Human Q96MW7
Background:	The protein encoded by this gene belongs to the tigger subfamily of the pogo superfamily of DNA-mediated transposons in humans. These proteins are related to DNA transposons found in fungi and nematodes, and more distantly to the Tc1 and mariner transposases. They are also very similar to the major mammalian centromere protein B. The exact function of this gene is not known. [provided by RefSeq]

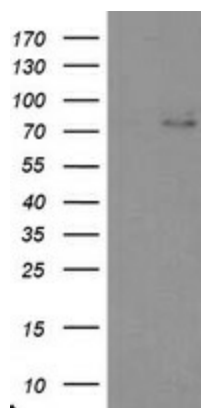


[View online »](#)

Synonyms: EEYORE

Protein Families: Transcription Factors

Product images:



HEK293T cells were transfected with the pCMV6-ENTRY control (Left lane) or pCMV6-ENTRY TIGD1 ([RC207323], Right lane) cDNA for 48 hrs and lysed. Equivalent amounts of cell lysates (5 ug per lane) were separated by SDS-PAGE and immunoblotted with anti-TIGD1. Positive lysates [LY407903] (100ug) and [LC407903] (20ug) can be purchased separately from OriGene.