

## Product datasheet for **TA800129AM**

### SENP2 Mouse Monoclonal Antibody (Biotin conjugated) [Clone ID: OTI3D12]

#### Product data:

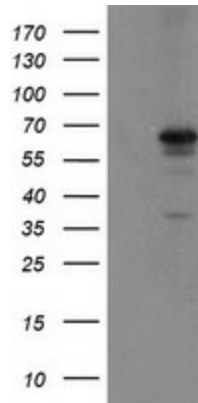
Product Type:	Primary Antibodies
Clone Name:	OTI3D12
Applications:	FC, IF, WB
Recommended Dilution:	WB 1:500~2000, IF 1:100, FLOW 1:100
Reactivity:	Human, Mouse, Rat
Host:	Mouse
Isotype:	IgG1
Clonality:	Monoclonal
Immunogen:	Human recombinant protein fragment corresponding to amino acids 139-523 of human SENP2 (NP_067640) produced in E.coli.
Formulation:	PBS (pH 7.3) containing 1% BSA, 50% glycerol and 0.02% sodium azide.
Concentration:	0.5 mg/ml
Purification:	Purified from mouse ascites fluids or tissue culture supernatant by affinity chromatography (protein A/G)
Conjugation:	Biotin
Storage:	Store at -20°C as received.
Stability:	Stable for 12 months from date of receipt.
Gene Name:	SUMO1/sentrin/SMT3 specific peptidase 2
Database Link:	<a href="#">NP_067640</a> <a href="#">Entrez Gene 75826 Mouse</a> <a href="#">Entrez Gene 78973 Rat</a> <a href="#">Entrez Gene 59343 Human</a> <a href="#">Q9HC62</a>
Background:	SUMO1 (UBL1; MIM 601912) is a small ubiquitin-like protein that can be covalently conjugated to other proteins. SENP2 is one of a group of enzymes that process newly synthesized SUMO1 into the conjugatable form and catalyze the deconjugation of SUMO1-containing species. [supplied by OMIM]. COMPLETENESS: complete on the 3' end.
Synonyms:	AXAM2; SMT3IP2
Protein Families:	Druggable Genome, Protease



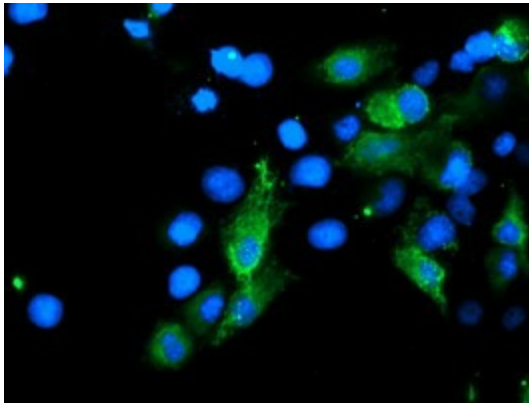
[View online »](#)

Protein Pathways: Wnt signaling pathway

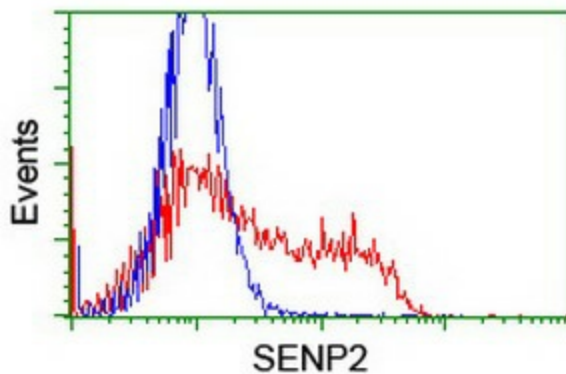
### Product images:



HEK293T cells were transfected with the pCMV6-ENTRY control (Left lane) or pCMV6-ENTRY SENP2 ([RC208109], Right lane) cDNA for 48 hrs and lysed. Equivalent amounts of cell lysates (5 ug per lane) were separated by SDS-PAGE and immunoblotted with anti-SENP2.



Anti-SENP2 mouse monoclonal antibody ([TA800129]) immunofluorescent staining of COS7 cells transiently transfected by pCMV6-ENTRY SENP2 ([RC208109]).



HEK293T cells transfected with either [RC208109] overexpress plasmid (Red) or empty vector control plasmid (Blue) were immunostained by anti-SENP2 antibody ([TA800129]), and then analyzed by flow cytometry.