

Product datasheet for **TA800103M**

Proteasome subunit alpha type 6 (PSMA6) Mouse Monoclonal Antibody [Clone ID: OTI2A6]

Product data:

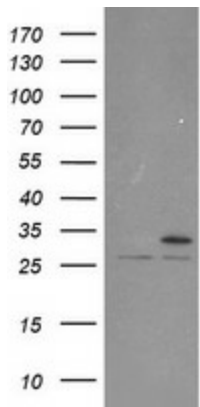
Product Type:	Primary Antibodies
Clone Name:	OTI2A6
Applications:	FC, WB
Recommended Dilution:	WB 1:500~1000, FLOW 1:100
Reactivity:	Human, Dog, Rat, Monkey, Mouse
Host:	Mouse
Isotype:	IgG1
Clonality:	Monoclonal
Immunogen:	Full length human recombinant protein of human PSMA6 (NP_002782) produced in E.coli.
Formulation:	PBS (pH 7.3) containing 1% BSA, 50% glycerol and 0.02% sodium azide.
Concentration:	1 mg/ml
Purification:	Purified from mouse ascites fluids or tissue culture supernatant by affinity chromatography (protein A/G)
Conjugation:	Unconjugated
Storage:	Store at -20°C as received.
Stability:	Stable for 12 months from date of receipt.
Predicted Protein Size:	27.2 kDa
Gene Name:	proteasome subunit alpha 6
Database Link:	NP_002782 Entrez Gene 26443 Mouse Entrez Gene 29673 Rat Entrez Gene 480290 Dog Entrez Gene 695113 Monkey Entrez Gene 5687 Human P60900


[View online »](#)

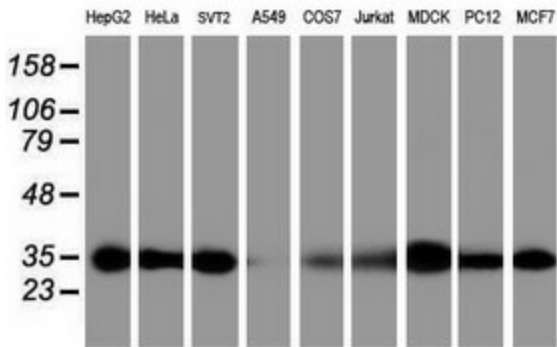
Background: The proteasome is a multicatalytic proteinase complex with a highly ordered ring-shaped 20S core structure. The core structure is composed of 4 rings of 28 non-identical subunits; 2 rings are composed of 7 alpha subunits and 2 rings are composed of 7 beta subunits. Proteasomes are distributed throughout eukaryotic cells at a high concentration and cleave peptides in an ATP/ubiquitin-dependent process in a non-lysosomal pathway. An essential function of a modified proteasome, the immunoproteasome, is the processing of class I MHC peptides. This gene encodes a member of the peptidase T1A family, that is a 20S core alpha subunit. A pseudogene has been identified on the Y chromosome. [provided by RefSeq]

Synonyms: IOTA; p27K; PROS27
Protein Families: Druggable Genome, Protease, Stem cell - Pluripotency
Protein Pathways: Proteasome

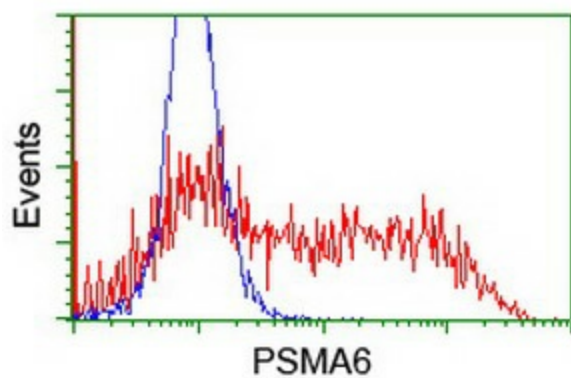
Product images:



HEK293T cells were transfected with the pCMV6-ENTRY control (Left lane) or pCMV6-ENTRY PSMA6 [RC209976], Right lane) cDNA for 48 hrs and lysed. Equivalent amounts of cell lysates (5 ug per lane) were separated by SDS-PAGE and immunoblotted with anti-PSMA6. Positive lysates [LY419119] (100ug) and [LC419119] (20ug) can be purchased separately from OriGene.



Western blot analysis of extracts (35ug) from 9 different cell lines by using anti-PSMA6 monoclonal antibody (HepG2: human; HeLa: human; SVT2: mouse; A549: human; COS7: monkey; Jurkat: human; MDCK: canine; PC12: rat; MCF7: human).



HEK293T cells transfected with either [RC209976] overexpress plasmid (Red) or empty vector control plasmid (Blue) were immunostained by anti-PSMA6 antibody ([TA800103]), and then analyzed by flow cytometry.