

## Product datasheet for **TA800097AM**

### USP36 Mouse Monoclonal Antibody (Biotin conjugated) [Clone ID: OTI2F1]

#### Product data:

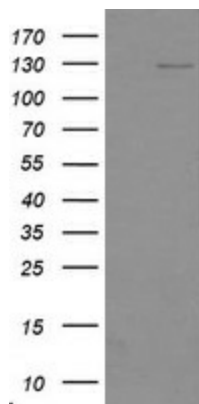
Product Type:	Primary Antibodies
Clone Name:	OTI2F1
Applications:	WB
Recommended Dilution:	WB 1:2000
Reactivity:	Human
Host:	Mouse
Isotype:	IgG1
Clonality:	Monoclonal
Immunogen:	Human recombinant protein fragment corresponding to amino acids 589-972 of human USP36 (NP_079366) produced in E.coli.
Formulation:	PBS (pH 7.3) containing 1% BSA, 50% glycerol and 0.02% sodium azide.
Concentration:	0.5 mg/ml
Purification:	Purified from mouse ascites fluids or tissue culture supernatant by affinity chromatography (protein A/G)
Conjugation:	Biotin
Storage:	Store at -20°C as received.
Stability:	Stable for 12 months from date of receipt.
Predicted Protein Size:	122.7 kDa
Gene Name:	ubiquitin specific peptidase 36
Database Link:	<a href="#">NP_079366</a> <a href="#">Entrez Gene 57602 Human</a> <a href="#">Q9P275</a>
Background:	Modification of cellular proteins by ubiquitin is an essential regulatory mechanism controlled by the coordinated action of multiple ubiquitin-conjugating and deubiquitinating enzymes. USP36 belongs to a large family of cysteine proteases that function as deubiquitinating enzymes (Quesada et al., 2004 [PubMed 14715245]). [supplied by OMIM]
Synonyms:	DUB1



[View online »](#)

Protein Families: Druggable Genome, Protease

### Product images:



HEK293T cells were transfected with the pCMV6-ENTRY control (Left lane) or pCMV6-ENTRY USP36 ([RC209781], Right lane) cDNA for 48 hrs and lysed. Equivalent amounts of cell lysates (5 ug per lane) were separated by SDS-PAGE and immunoblotted with anti-USP36. Positive lysates [LY403047] (100ug) and [LC403047] (20ug) can be purchased separately from OriGene.