

Product datasheet for **TA800096S**

USP36 Mouse Monoclonal Antibody [Clone ID: OTI3B9]

Product data:

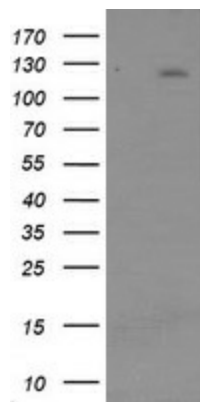
| | |
|-------------------------|---|
| Product Type: | Primary Antibodies |
| Clone Name: | OTI3B9 |
| Applications: | IF, WB |
| Recommended Dilution: | WB 1:2000, IF 1:100 |
| Reactivity: | Human |
| Host: | Mouse |
| Isotype: | IgG1 |
| Clonality: | Monoclonal |
| Immunogen: | Human recombinant protein fragment corresponding to amino acids 589-972 of human USP36 (NP_079366) produced in E.coli. |
| Formulation: | PBS (pH 7.3) containing 1% BSA, 50% glycerol and 0.02% sodium azide. |
| Concentration: | 1 mg/ml |
| Purification: | Purified from mouse ascites fluids or tissue culture supernatant by affinity chromatography (protein A/G) |
| Conjugation: | Unconjugated |
| Storage: | Store at -20°C as received. |
| Stability: | Stable for 12 months from date of receipt. |
| Predicted Protein Size: | 122.7 kDa |
| Gene Name: | ubiquitin specific peptidase 36 |
| Database Link: | NP_079366 Entrez Gene 57602 Human Q9P275 |
| Background: | Modification of cellular proteins by ubiquitin is an essential regulatory mechanism controlled by the coordinated action of multiple ubiquitin-conjugating and deubiquitinating enzymes. USP36 belongs to a large family of cysteine proteases that function as deubiquitinating enzymes (Quesada et al., 2004 [PubMed 14715245]). [supplied by OMIM] |
| Synonyms: | DUB1 |



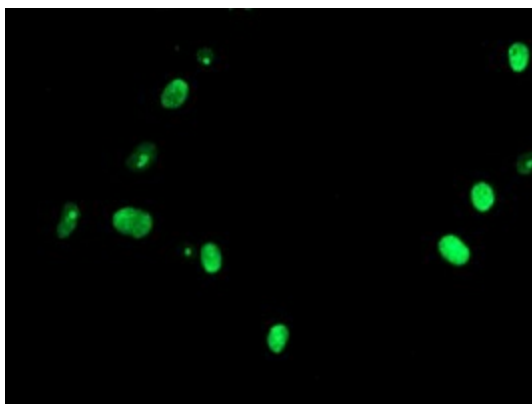
[View online »](#)

Protein Families: Druggable Genome, Protease

Product images:



HEK293T cells were transfected with the pCMV6-ENTRY control (Left lane) or pCMV6-ENTRY USP36 ([RC209781], Right lane) cDNA for 48 hrs and lysed. Equivalent amounts of cell lysates (5 ug per lane) were separated by SDS-PAGE and immunoblotted with anti-USP36. Positive lysates [LY403047] (100ug) and [LC403047] (20ug) can be purchased separately from OriGene.



Anti-USP36 mouse monoclonal antibody ([TA800096]) immunofluorescent staining of COS7 cells transiently transfected by pCMV6-ENTRY USP36 ([RC209781]).