

Product datasheet for **TA800089BM**

Ubiquinol Cytochrome C Reductase Core Protein I (UQCRC1) Mouse Monoclonal Antibody (HRP conjugated) [Clone ID: OTI1G6]

Product data:

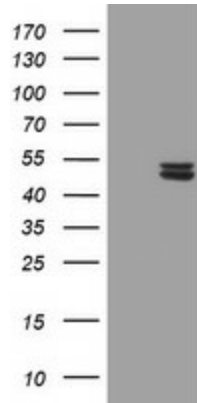
Product Type:	Primary Antibodies
Clone Name:	OTI1G6
Applications:	FC, IHC, WB
Recommended Dilution:	WB 1:500~1000, IHC 1:150, FLOW 1:100
Reactivity:	Human, Dog, Rat, Monkey, Mouse
Host:	Mouse
Isotype:	IgG1
Clonality:	Monoclonal
Immunogen:	Human recombinant protein fragment corresponding to amino acids 46-305 of human UQCRC1 (NP_003356) produced in E.coli.
Formulation:	PBS (pH 7.3) containing 1% BSA, 50% glycerol.
Concentration:	0.5 mg/ml
Purification:	Purified from mouse ascites fluids or tissue culture supernatant by affinity chromatography (protein A/G)
Conjugation:	HRP
Storage:	Store at -20°C as received.
Stability:	Stable for 12 months from date of receipt.
Predicted Protein Size:	52.5 kDa
Gene Name:	ubiquinol-cytochrome c reductase core protein I
Database Link:	NP_003356 Entrez Gene 22273 MouseEntrez Gene 301011 RatEntrez Gene 608455 DogEntrez Gene 677864 MonkeyEntrez Gene 7384 Human P31930
Synonyms:	D3S3191; QCR1; UQCR1
Protein Families:	Druggable Genome, Protease



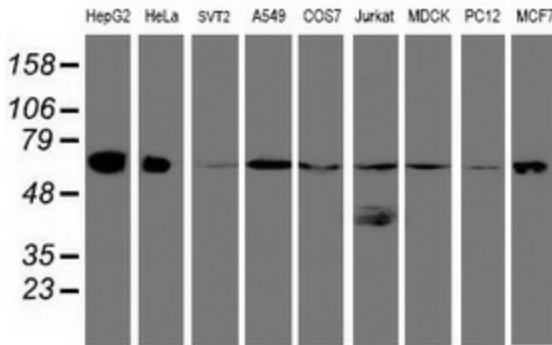
[View online »](#)

Protein Pathways: Alzheimer's disease, Cardiac muscle contraction, Huntington's disease, Metabolic pathways, Oxidative phosphorylation, Parkinson's disease

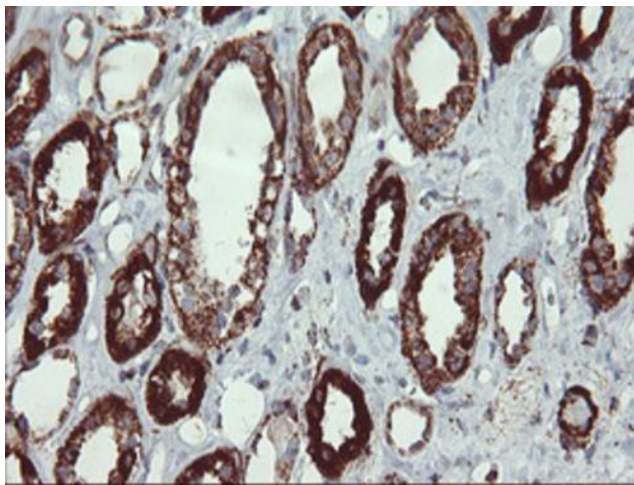
Product images:



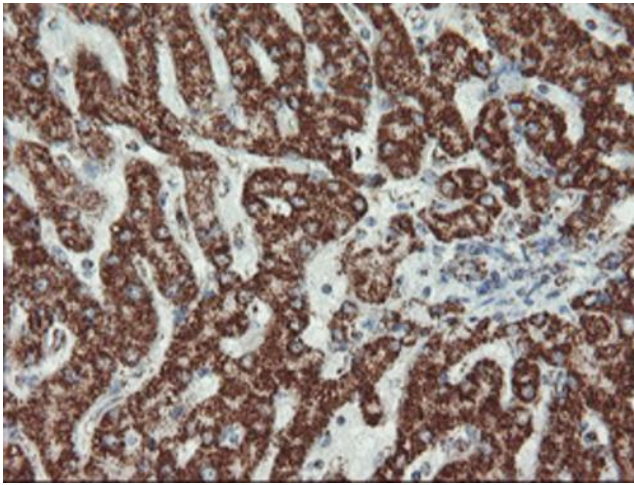
HEK293T cells were transfected with the pCMV6-ENTRY control (Cat# [PS100001], Left lane) or pCMV6-ENTRY UQCRC1 (Cat# [RC203299], Right lane) cDNA for 48 hrs and lysed. Equivalent amounts of cell lysates (5 ug per lane) were separated by SDS-PAGE and immunoblotted with anti-UQCRC1 (Cat# [TA800089]). Positive lysates [LY401151] (100ug) and [LC401151] (20ug) can be purchased separately from OriGene.



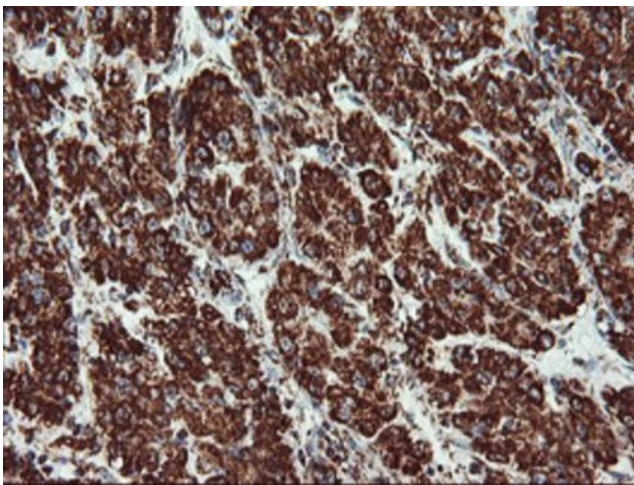
Western blot analysis of extracts (35ug) from 9 different cell lines by using anti-UQCRC1 monoclonal antibody (HepG2: human; HeLa: human; SVT2: mouse; A549: human; COS7: monkey; Jurkat: human; MDCK: canine; PC12: rat; MCF7: human).



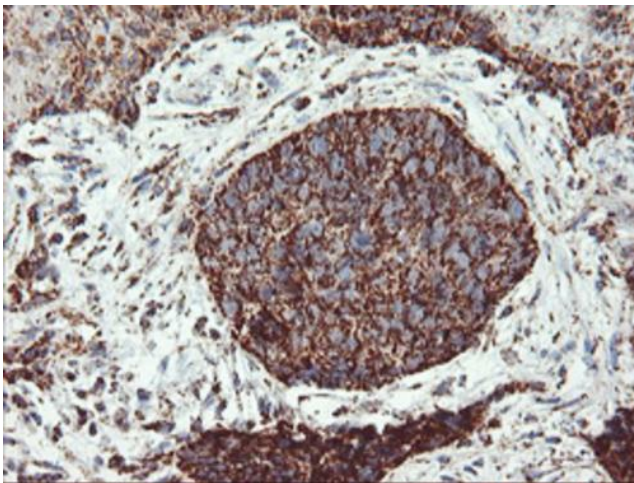
Immunohistochemical staining of paraffin-embedded Human Kidney tissue within the normal limits using anti-UQCRC1 mouse monoclonal antibody. (Heat-induced epitope retrieval by 10mM citric buffer, pH6.0, 100°C for 10min, [TA800089])



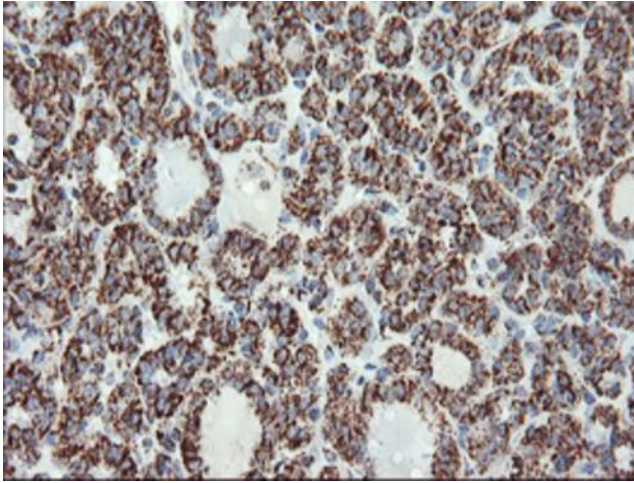
Immunohistochemical staining of paraffin-embedded Human liver tissue within the normal limits using anti-UQCRC1 mouse monoclonal antibody. (Heat-induced epitope retrieval by 10mM citric buffer, pH6.0, 100°C for 10min, [TA800089])



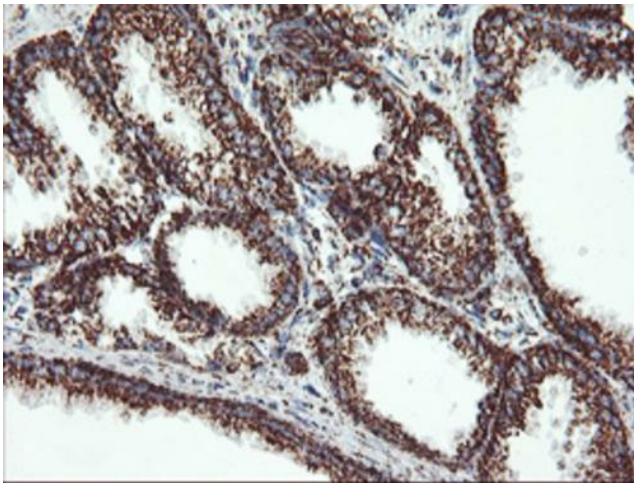
Immunohistochemical staining of paraffin-embedded Carcinoma of Human liver tissue using anti-UQCRC1 mouse monoclonal antibody. (Heat-induced epitope retrieval by 10mM citric buffer, pH6.0, 100°C for 10min, [TA800089])



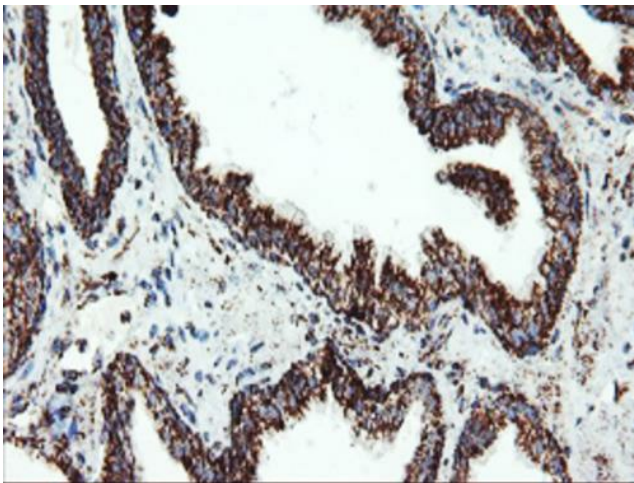
Immunohistochemical staining of paraffin-embedded Carcinoma of Human lung tissue using anti-UQCRC1 mouse monoclonal antibody. (Heat-induced epitope retrieval by 10mM citric buffer, pH6.0, 100°C for 10min, [TA800089])



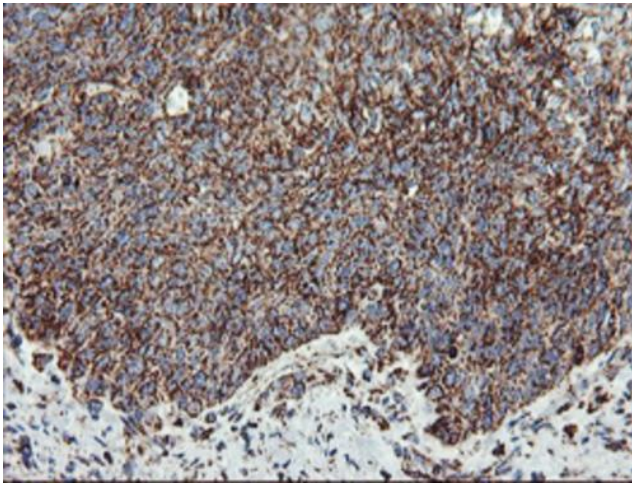
Immunohistochemical staining of paraffin-embedded Carcinoma of Human thyroid tissue using anti-UQCRC1 mouse monoclonal antibody. (Heat-induced epitope retrieval by 10mM citric buffer, pH6.0, 100°C for 10min, [TA800089])



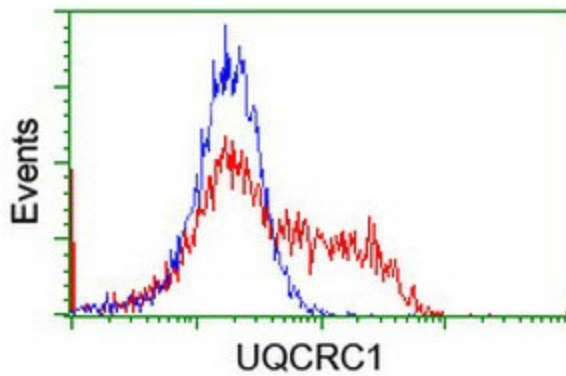
Immunohistochemical staining of paraffin-embedded Human prostate tissue within the normal limits using anti-UQCRC1 mouse monoclonal antibody. (Heat-induced epitope retrieval by 10mM citric buffer, pH6.0, 100°C for 10min, [TA800089])



Immunohistochemical staining of paraffin-embedded Carcinoma of Human prostate tissue using anti-UQCRC1 mouse monoclonal antibody. (Heat-induced epitope retrieval by 10mM citric buffer, pH6.0, 100°C for 10min, [TA800089])



Immunohistochemical staining of paraffin-embedded Carcinoma of Human bladder tissue using anti-UQCRC1 mouse monoclonal antibody. (Heat-induced epitope retrieval by 10mM citric buffer, pH6.0, 100°C for 10min, [TA800089])



HEK293T cells transfected with either [RC203299] overexpress plasmid (Red) or empty vector control plasmid (Blue) were immunostained by anti-UQCRC1 antibody ([TA800089]), and then analyzed by flow cytometry.