

Product datasheet for **TA800089AM**

Ubiquinol Cytochrome C Reductase Core Protein I (UQCRC1) Mouse Monoclonal Antibody (Biotin conjugated) [Clone ID: OTI1G6]

Product data:

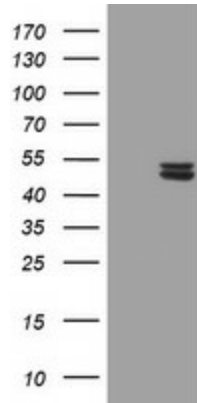
| | |
|-------------------------|--|
| Product Type: | Primary Antibodies |
| Clone Name: | OTI1G6 |
| Applications: | FC, IHC, WB |
| Recommended Dilution: | WB 1:500~1000, IHC 1:150, FLOW 1:100 |
| Reactivity: | Human, Dog, Rat, Monkey, Mouse |
| Host: | Mouse |
| Isotype: | IgG1 |
| Clonality: | Monoclonal |
| Immunogen: | Human recombinant protein fragment corresponding to amino acids 46-305 of human UQCRC1 (NP_003356) produced in E.coli. |
| Formulation: | PBS (pH 7.3) containing 1% BSA, 50% glycerol and 0.02% sodium azide. |
| Concentration: | 0.5 mg/ml |
| Purification: | Purified from mouse ascites fluids or tissue culture supernatant by affinity chromatography (protein A/G) |
| Conjugation: | Biotin |
| Storage: | Store at -20°C as received. |
| Stability: | Stable for 12 months from date of receipt. |
| Predicted Protein Size: | 52.5 kDa |
| Gene Name: | ubiquinol-cytochrome c reductase core protein I |
| Database Link: | NP_003356 Entrez Gene 22273 MouseEntrez Gene 301011 RatEntrez Gene 608455 DogEntrez Gene 677864 MonkeyEntrez Gene 7384 Human P31930 |
| Synonyms: | D3S3191; QCR1; UQCR1 |
| Protein Families: | Druggable Genome, Protease |



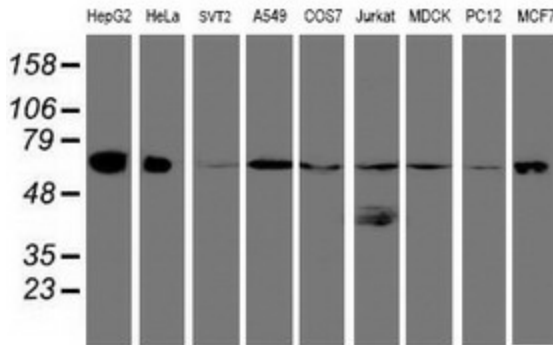
[View online »](#)

Protein Pathways: Alzheimer's disease, Cardiac muscle contraction, Huntington's disease, Metabolic pathways, Oxidative phosphorylation, Parkinson's disease

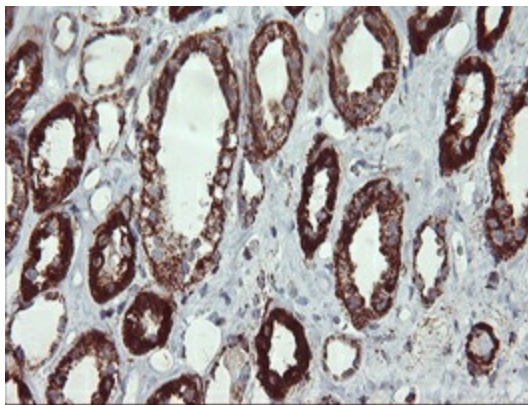
Product images:



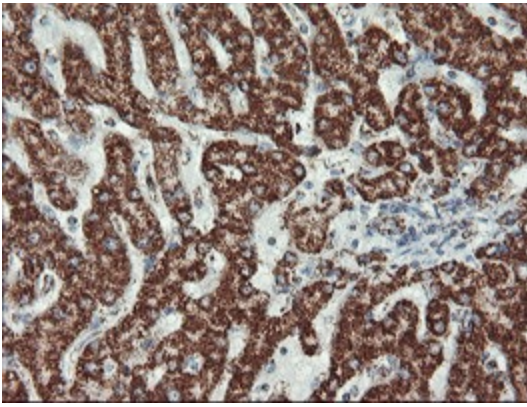
HEK293T cells were transfected with the pCMV6-ENTRY control (Cat# [PS100001], Left lane) or pCMV6-ENTRY UQCRC1 (Cat# [RC203299], Right lane) cDNA for 48 hrs and lysed. Equivalent amounts of cell lysates (5 ug per lane) were separated by SDS-PAGE and immunoblotted with anti-UQCRC1 (Cat# [TA800089]). Positive lysates [LY401151] (100ug) and [LC401151] (20ug) can be purchased separately from OriGene.



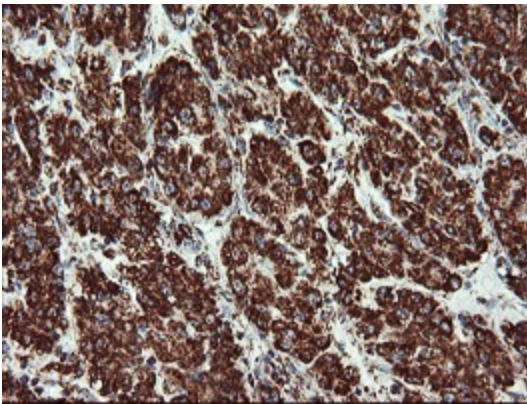
Western blot analysis of extracts (35ug) from 9 different cell lines by using anti-UQCRC1 monoclonal antibody (HepG2: human; HeLa: human; SVT2: mouse; A549: human; COS7: monkey; Jurkat: human; MDCK: canine; PC12: rat; MCF7: human).



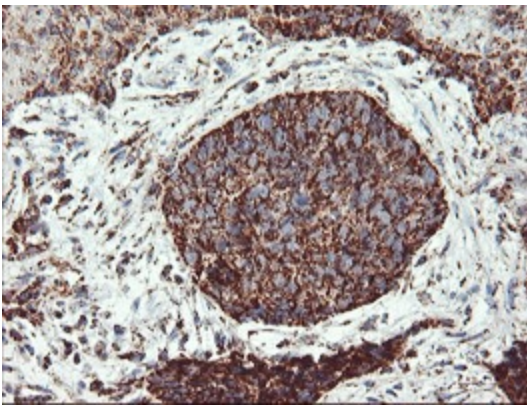
Immunohistochemical staining of paraffin-embedded Human Kidney tissue within the normal limits using anti-UQCRC1 mouse monoclonal antibody. (Heat-induced epitope retrieval by 10mM citric buffer, pH6.0, 100°C for 10min, [TA800089])



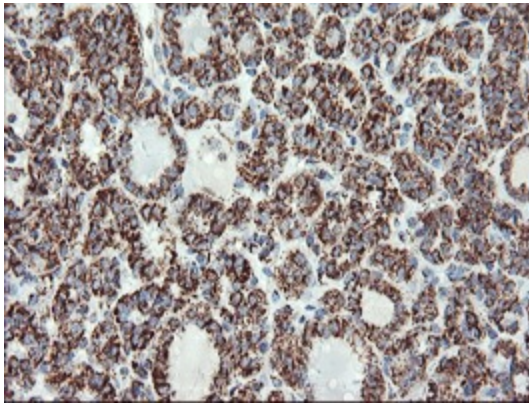
Immunohistochemical staining of paraffin-embedded Human liver tissue within the normal limits using anti-UQCRC1 mouse monoclonal antibody. (Heat-induced epitope retrieval by 10mM citric buffer, pH6.0, 100°C for 10min, [TA800089])



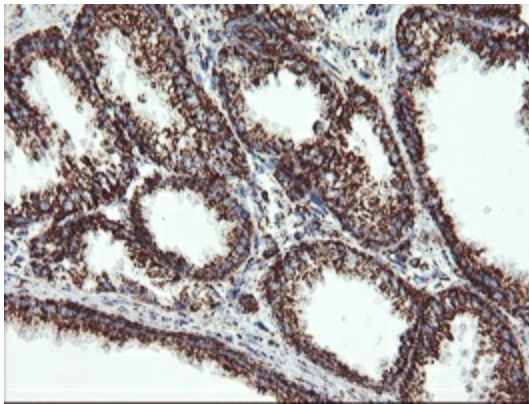
Immunohistochemical staining of paraffin-embedded Carcinoma of Human liver tissue using anti-UQCRC1 mouse monoclonal antibody. (Heat-induced epitope retrieval by 10mM citric buffer, pH6.0, 100°C for 10min, [TA800089])



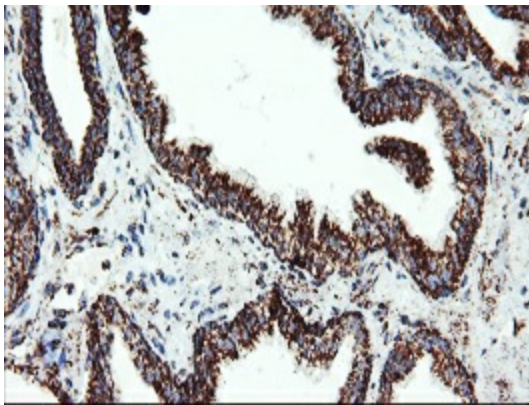
Immunohistochemical staining of paraffin-embedded Carcinoma of Human lung tissue using anti-UQCRC1 mouse monoclonal antibody. (Heat-induced epitope retrieval by 10mM citric buffer, pH6.0, 100°C for 10min, [TA800089])



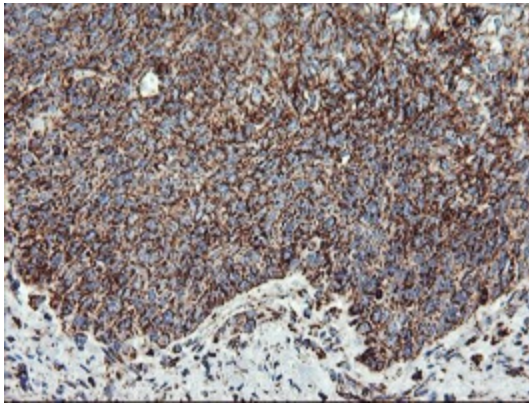
Immunohistochemical staining of paraffin-embedded Carcinoma of Human thyroid tissue using anti-UQCRC1 mouse monoclonal antibody. (Heat-induced epitope retrieval by 10mM citric buffer, pH6.0, 100°C for 10min, [TA800089])



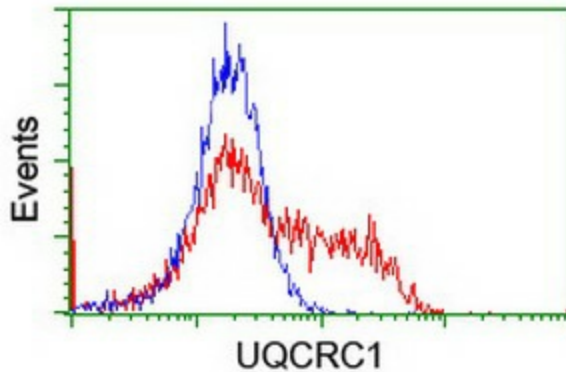
Immunohistochemical staining of paraffin-embedded Human prostate tissue within the normal limits using anti-UQCRC1 mouse monoclonal antibody. (Heat-induced epitope retrieval by 10mM citric buffer, pH6.0, 100°C for 10min, [TA800089])



Immunohistochemical staining of paraffin-embedded Carcinoma of Human prostate tissue using anti-UQCRC1 mouse monoclonal antibody. (Heat-induced epitope retrieval by 10mM citric buffer, pH6.0, 100°C for 10min, [TA800089])



Immunohistochemical staining of paraffin-embedded Carcinoma of Human bladder tissue using anti-UQCRC1 mouse monoclonal antibody. (Heat-induced epitope retrieval by 10mM citric buffer, pH6.0, 100°C for 10min, [TA800089])



HEK293T cells transfected with either [RC203299] overexpress plasmid (Red) or empty vector control plasmid (Blue) were immunostained by anti-UQCRC1 antibody ([TA800089]), and then analyzed by flow cytometry.