

## Product datasheet for **TA800081M**

### **TMS1 (PYCARD) Mouse Monoclonal Antibody [Clone ID: OTI3E9]**

#### **Product data:**

Product Type:	Primary Antibodies
Clone Name:	OTI3E9
Applications:	FC, IHC, WB
Recommended Dilution:	WB 1:500~2000, IHC 1:150, FLOW 1:100
Reactivity:	Human
Host:	Mouse
Isotype:	IgG1
Clonality:	Monoclonal
Immunogen:	Full length human recombinant protein of human PYCARD (NP_037390) produced in E.coli.
Formulation:	PBS (pH 7.3) containing 1% BSA, 50% glycerol and 0.02% sodium azide.
Concentration:	1 mg/ml
Purification:	Purified from mouse ascites fluids or tissue culture supernatant by affinity chromatography (protein A/G)
Conjugation:	Unconjugated
Storage:	Store at -20°C as received.
Stability:	Stable for 12 months from date of receipt.
Predicted Protein Size:	21.4 kDa
Gene Name:	PYD and CARD domain containing
Database Link:	<a href="#">NP_037390</a> <a href="#">Entrez Gene 29108 Human</a> <a href="#">Q9ULZ3</a>



[View online »](#)

**Background:**

This gene encodes an adaptor protein that is composed of two protein-protein interaction domains: a N-terminal PYRIN-PAAD-DAPIN domain (PYD) and a C-terminal caspase-recruitment domain (CARD). The PYD and CARD domains are members of the six-helix bundle death domain-fold superfamily that mediates assembly of large signaling complexes in the inflammatory and apoptotic signaling pathways via the activation of caspase. In normal cells, this protein is localized to the cytoplasm; however, in cells undergoing apoptosis, it forms ball-like aggregates near the nuclear periphery. Two transcript variants encoding different isoforms have been found for this gene. [provided by RefSeq]

**Synonyms:**

ASC; CARD5; TMS; TMS-1; TMS1

**Protein Families:**

Druggable Genome

**Protein Pathways:**

Cytosolic DNA-sensing pathway, NOD-like receptor signaling pathway

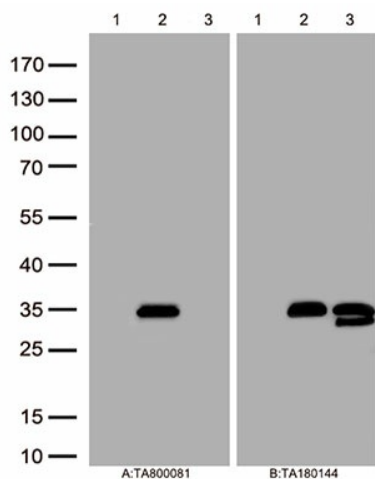
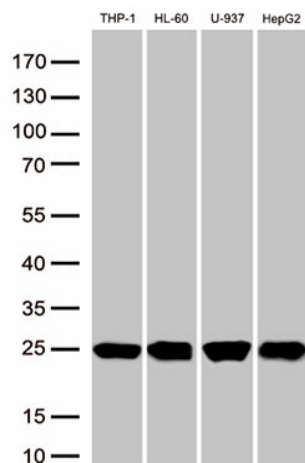
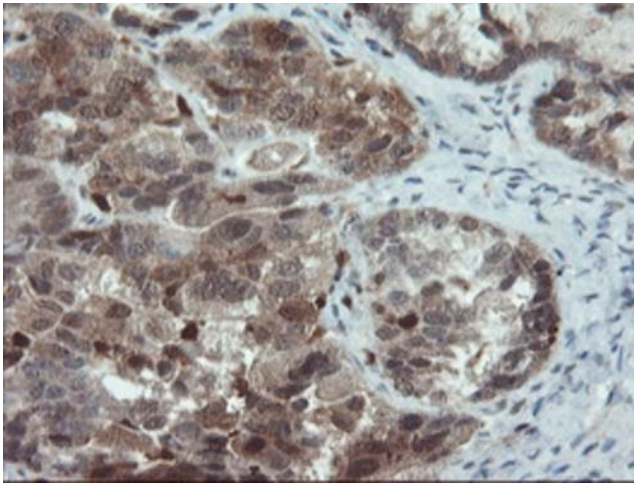
**Product images:**


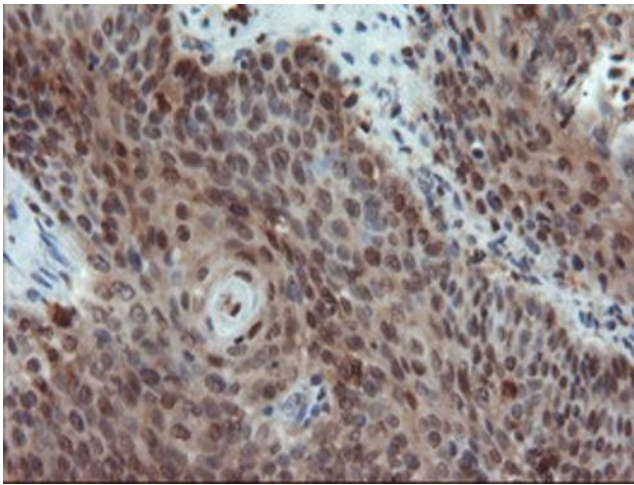
Figure A, Western blot analysis of overexpressed lysates(25ug per lane) from HEK293T cells transfected with empty plasmid ([PS100001], lane 1) , human PYCARD plasmid ([RC215592], lane 2), mouse PYCARD plasmid ([MR201872], lane 3) using anti-PYCARD antibody [TA800081] (1:1000). Figure B, Western blot analysis of the same samples as figure A with anti-DDK antibody ([TA180144], 1:1000)



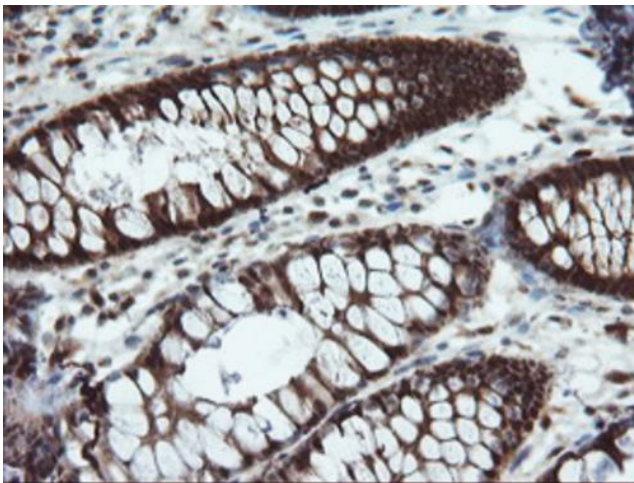
Western blot analysis of extracts (50ug per lane) from 4 cell lines lysates by using anti-PYCARD monoclonal antibody([TA800081], 1:1000)



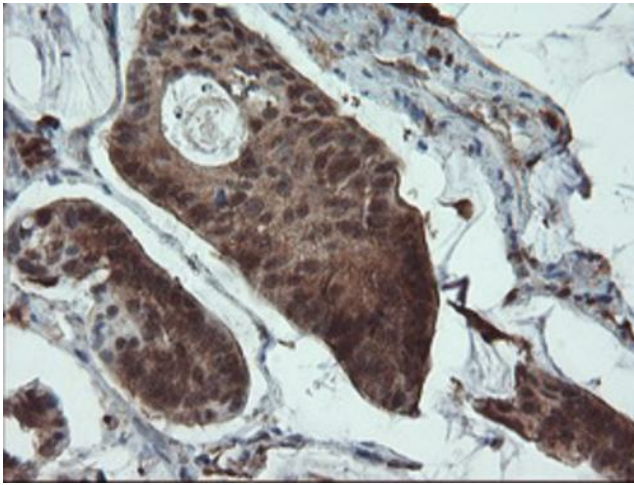
Immunohistochemical staining of paraffin-embedded Adenocarcinoma of Human ovary tissue using anti-PYCARD mouse monoclonal antibody. Heat-induced epitope retrieval by EDTA solution buffer pH 8.0 at 120°C for 3 min.



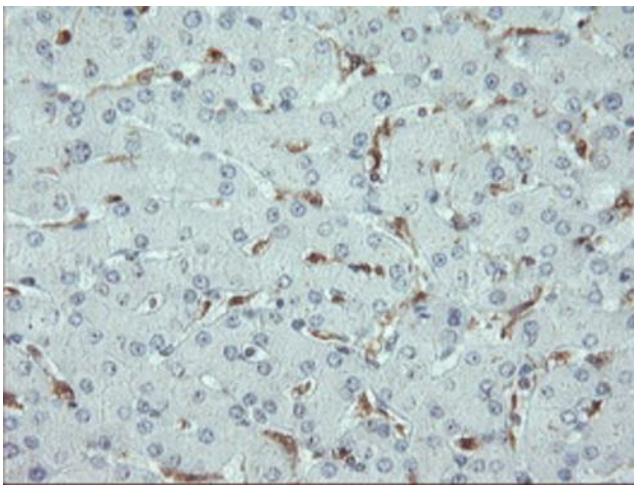
Immunohistochemical staining of paraffin-embedded Carcinoma of Human bladder tissue using anti-PYCARD mouse monoclonal antibody. (Heat-induced epitope retrieval by 10mM citric buffer, pH6.0, 100°C for 10min, [TA800081])



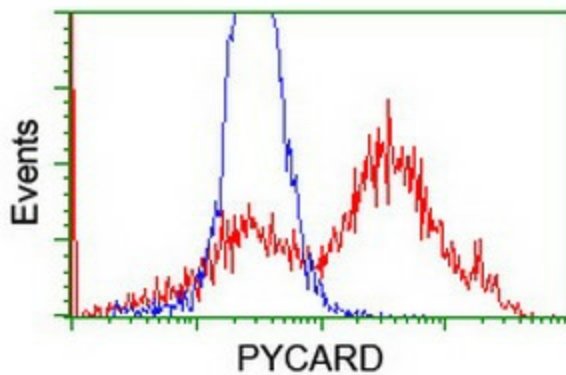
Immunohistochemical staining of paraffin-embedded Human colon tissue within the normal limits using anti-PYCARD mouse monoclonal antibody. Heat-induced epitope retrieval by EDTA solution buffer pH 8.0 at 120°C for 3 min.



Immunohistochemical staining of paraffin-embedded Carcinoma of Human pancreas tissue using anti-PYCARD mouse monoclonal antibody. Heat-induced epitope retrieval by EDTA solution buffer pH 8.0 at 120°C for 3 min.



Immunohistochemical staining of paraffin-embedded Human liver tissue within the normal limits using anti-PYCARD mouse monoclonal antibody. Heat-induced epitope retrieval by EDTA solution buffer pH 8.0 at 120°C for 3 min.



HEK293T cells transfected with either [RC215592] overexpress plasmid (Red) or empty vector control plasmid (Blue) were immunostained by anti-PYCARD antibody ([TA800081]), and then analyzed by flow cytometry.