

Product datasheet for **TA800078**

SERPINB1 Mouse Monoclonal Antibody [Clone ID: OTI2B4]

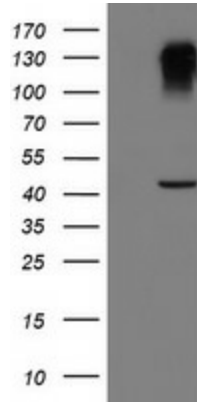
Product data:

Product Type:	Primary Antibodies
Clone Name:	OTI2B4
Applications:	FC, IHC, WB
Recommended Dilution:	WB 1:500~2000, IHC 1:150, FLOW 1:100
Reactivity:	Human, Monkey
Host:	Mouse
Isotype:	IgG2a
Clonality:	Monoclonal
Immunogen:	Human recombinant protein fragment corresponding to amino acids 77-306 of human SERPINB1 (NP_109591) produced in E.coli.
Formulation:	PBS (pH 7.3) containing 1% BSA, 50% glycerol and 0.02% sodium azide.
Concentration:	1 mg/ml
Purification:	Purified from mouse ascites fluids or tissue culture supernatant by affinity chromatography (protein A/G)
Conjugation:	Unconjugated
Storage:	Store at -20°C as received.
Stability:	Stable for 12 months from date of receipt.
Predicted Protein Size:	42.6 kDa
Gene Name:	serpin family B member 1
Database Link:	NP_109591 Entrez Gene 707471 Monkey Entrez Gene 1992 Human P30740
Synonyms:	EI; ELANH2; HEL-S-27; HEL57; LEI; M/NEI; MNEI; PI-2; PI2
Protein Families:	Druggable Genome

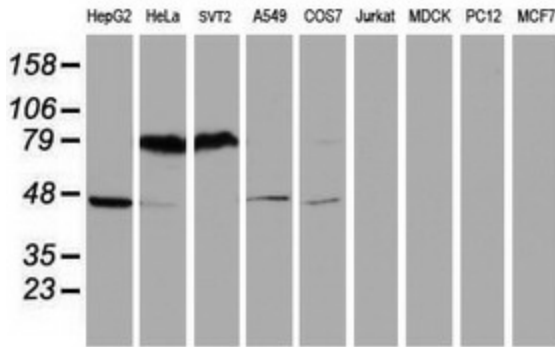


[View online »](#)

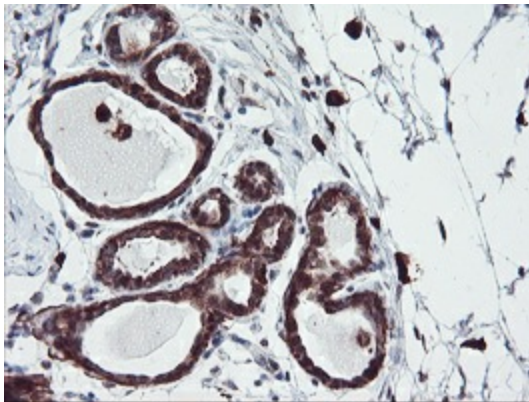
Product images:



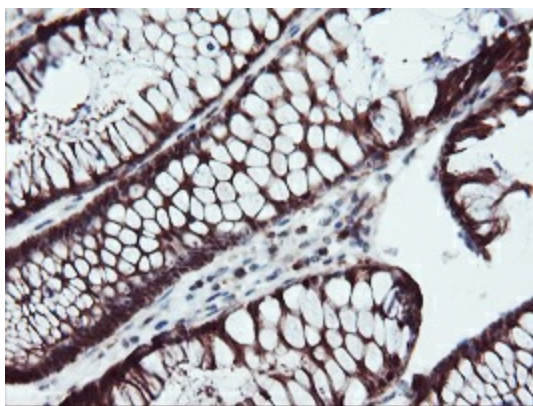
HEK293T cells were transfected with the pCMV6-ENTRY control (Left lane) or pCMV6-ENTRY SERPINB1 ([RC202138], Right lane) cDNA for 48 hrs and lysed. Equivalent amounts of cell lysates (5 ug per lane) were separated by SDS-PAGE and immunoblotted with anti-SERPINB1. Positive lysates [LY410744] (100ug) and [LC410744] (20ug) can be purchased separately from OriGene.



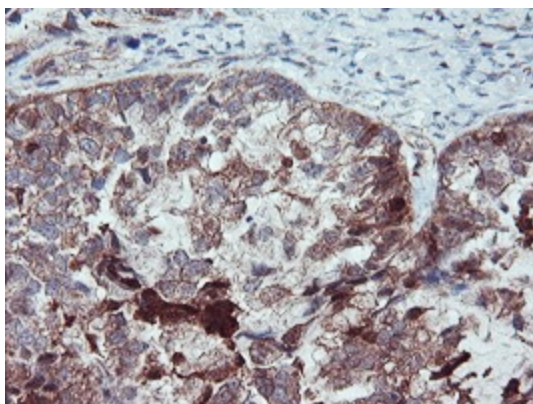
Western blot analysis of extracts (35ug) from 9 different cell lines by using anti-SERPINB1 monoclonal antibody (HepG2: human; HeLa: human; SVT2: mouse; A549: human; COS7: monkey; Jurkat: human; MDCK: canine; PC12: rat; MCF7: human).



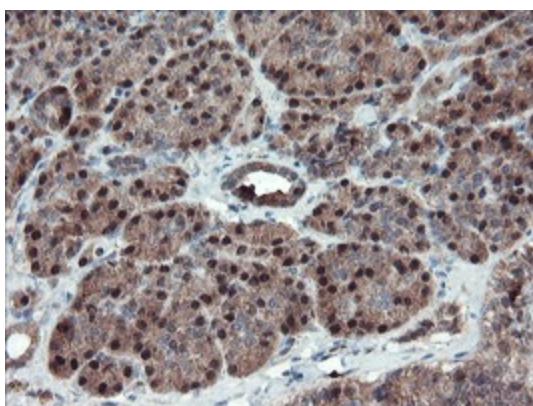
Immunohistochemical staining of paraffin-embedded Human breast tissue within the normal limits using anti-SERPINB1 mouse monoclonal antibody. (Heat-induced epitope retrieval by 10mM citric buffer, pH6.0, 100°C for 10min, TA800078)



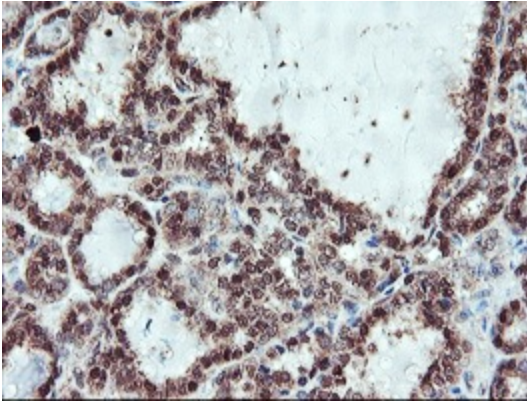
Immunohistochemical staining of paraffin-embedded Human colon tissue within the normal limits using anti-SERPINB1 mouse monoclonal antibody. (Heat-induced epitope retrieval by 10mM citric buffer, pH6.0, 100°C for 10min, TA800078)



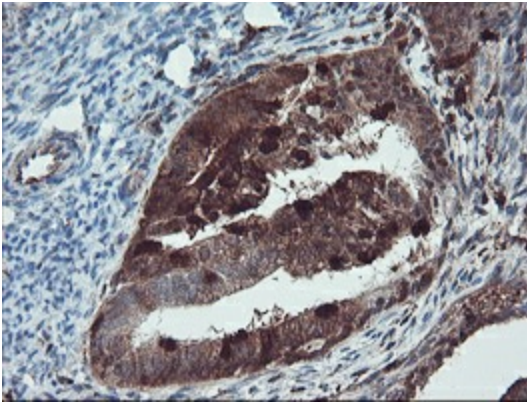
Immunohistochemical staining of paraffin-embedded Adenocarcinoma of Human ovary tissue using anti-SERPINB1 mouse monoclonal antibody. (Heat-induced epitope retrieval by 10mM citric buffer, pH6.0, 100°C for 10min, TA800078)



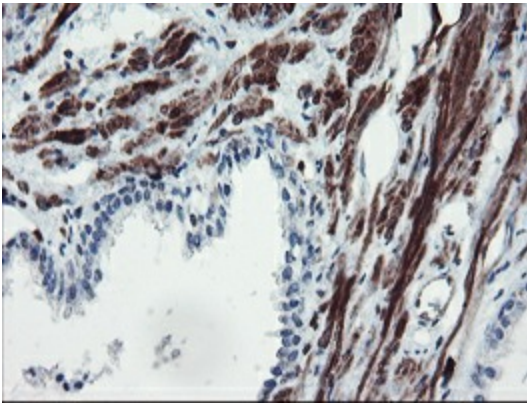
Immunohistochemical staining of paraffin-embedded Human pancreas tissue within the normal limits using anti-SERPINB1 mouse monoclonal antibody. (Heat-induced epitope retrieval by 10mM citric buffer, pH6.0, 100°C for 10min, TA800078)



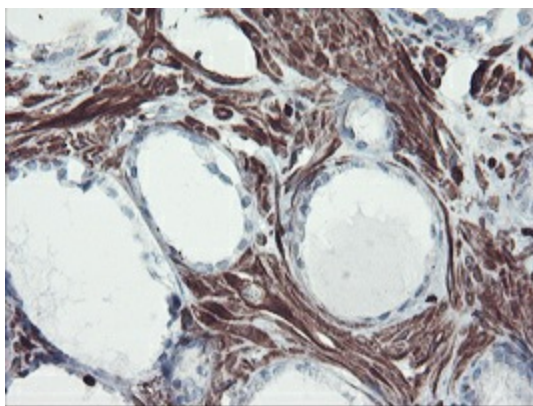
Immunohistochemical staining of paraffin-embedded Carcinoma of Human thyroid tissue using anti-SERPINB1 mouse monoclonal antibody. (Heat-induced epitope retrieval by 10mM citric buffer, pH6.0, 100°C for 10min, TA800078)



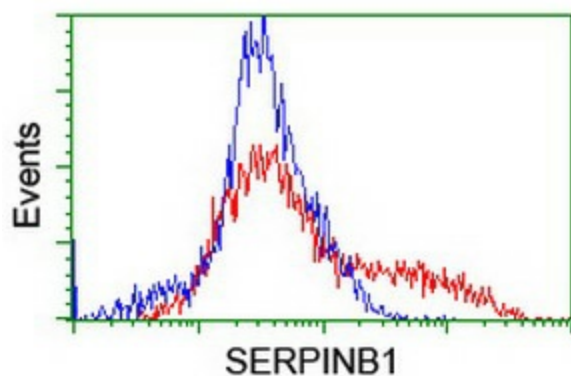
Immunohistochemical staining of paraffin-embedded Adenocarcinoma of Human endometrium tissue using anti-SERPINB1 mouse monoclonal antibody. (Heat-induced epitope retrieval by 10mM citric buffer, pH6.0, 100°C for 10min, TA800078)



Immunohistochemical staining of paraffin-embedded Human prostate tissue within the normal limits using anti-SERPINB1 mouse monoclonal antibody. (Heat-induced epitope retrieval by 10mM citric buffer, pH6.0, 100°C for 10min, TA800078)



Immunohistochemical staining of paraffin-embedded Carcinoma of Human prostate tissue using anti-SERPINB1 mouse monoclonal antibody. (Heat-induced epitope retrieval by 10mM citric buffer, pH6.0, 100°C for 10min, TA800078)



HEK293T cells transfected with either [RC202138] overexpress plasmid (Red) or empty vector control plasmid (Blue) were immunostained by anti-SERPINB1 antibody (TA800078), and then analyzed by flow cytometry.